



ALTON FLYOVER

Miami Beach





South Beach





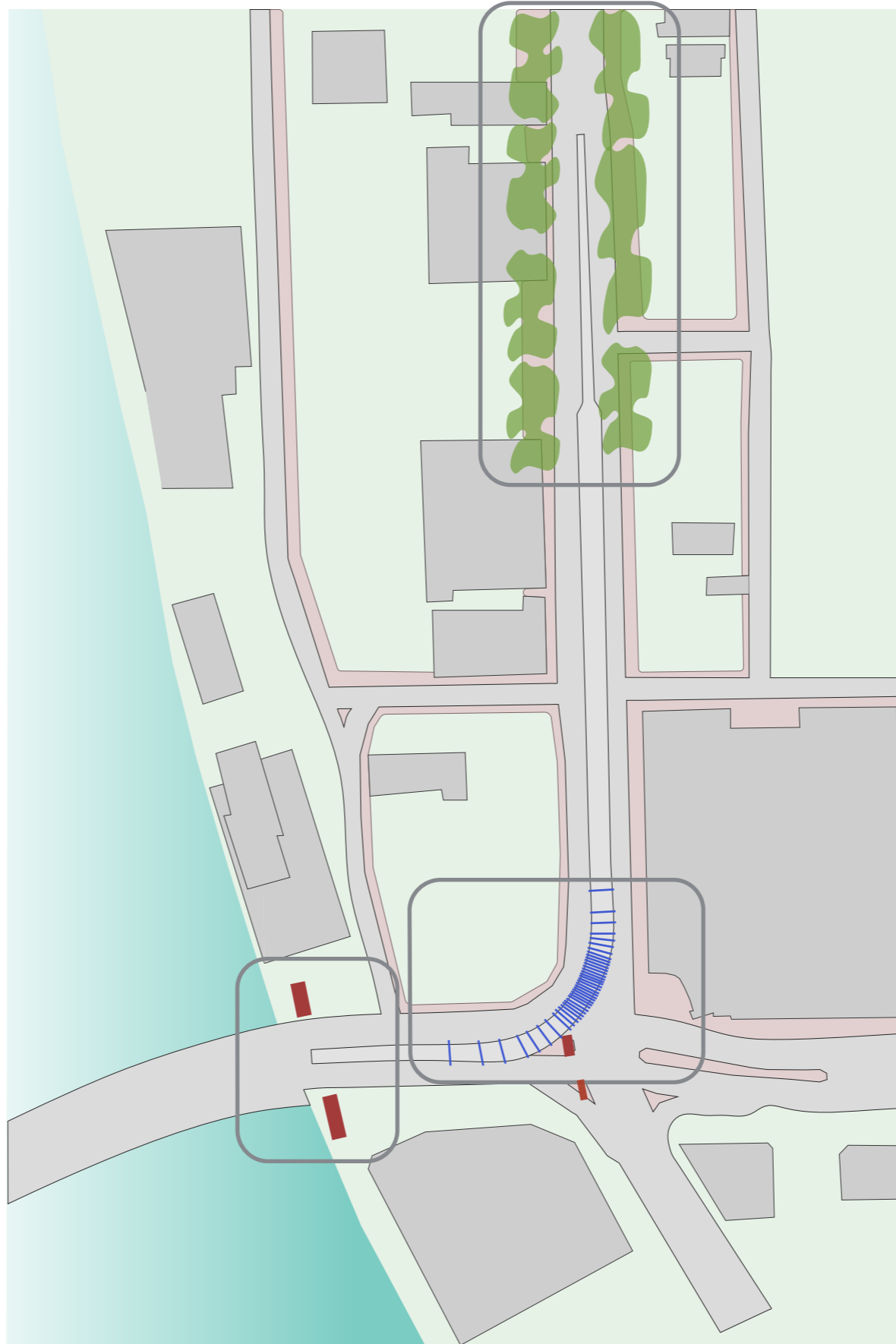
FIU | Landscape Architecture +
Environmental and Urban Design
COLLEGE OF ARCHITECTURE + THE ARTS

FIU | Architecture
COLLEGE OF ARCHITECTURE + THE ARTS

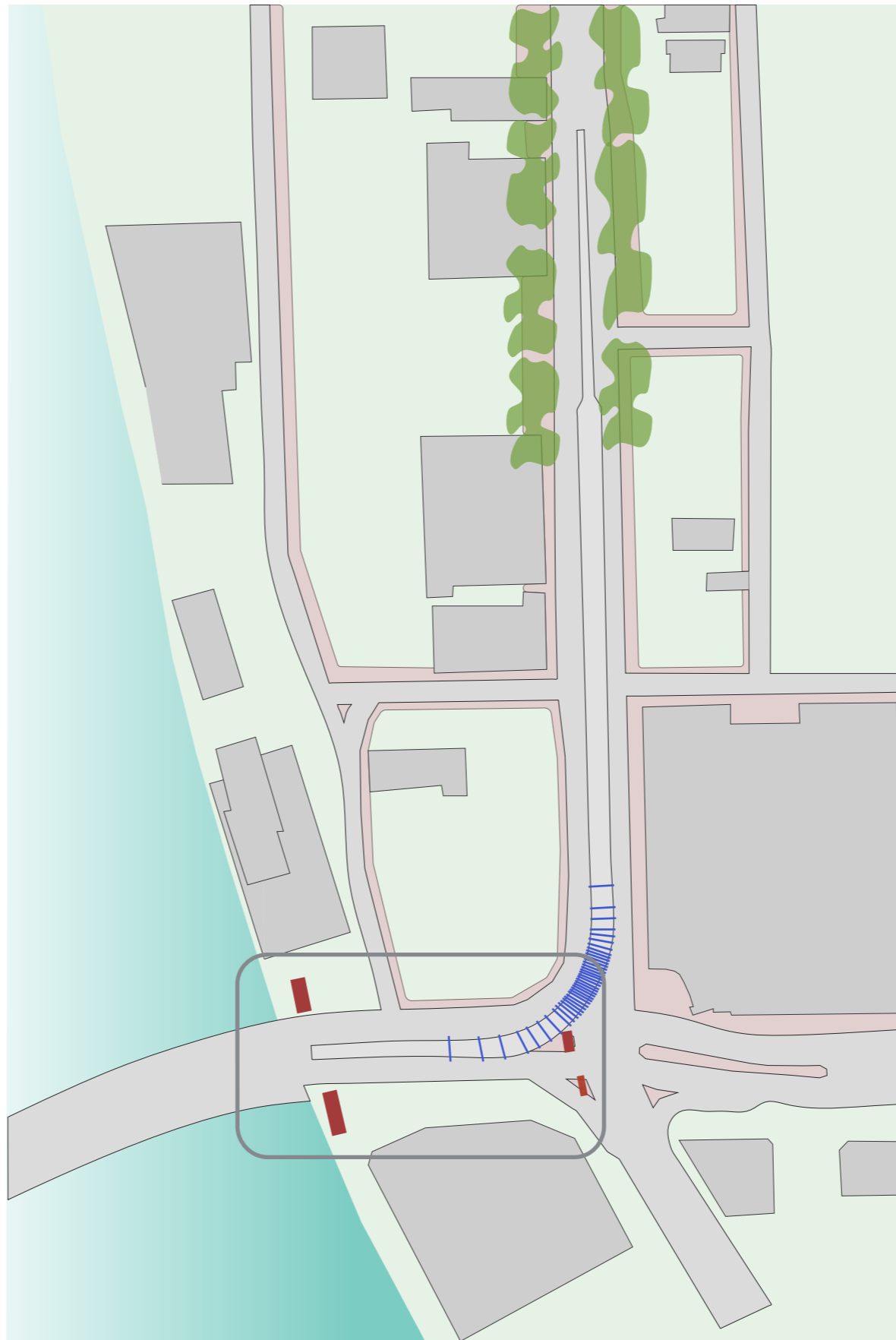
FIU | Art + Art History
COLLEGE OF ARCHITECTURE + THE ARTS



OVERALL SITE PLAN | THREE EXPERIENCES

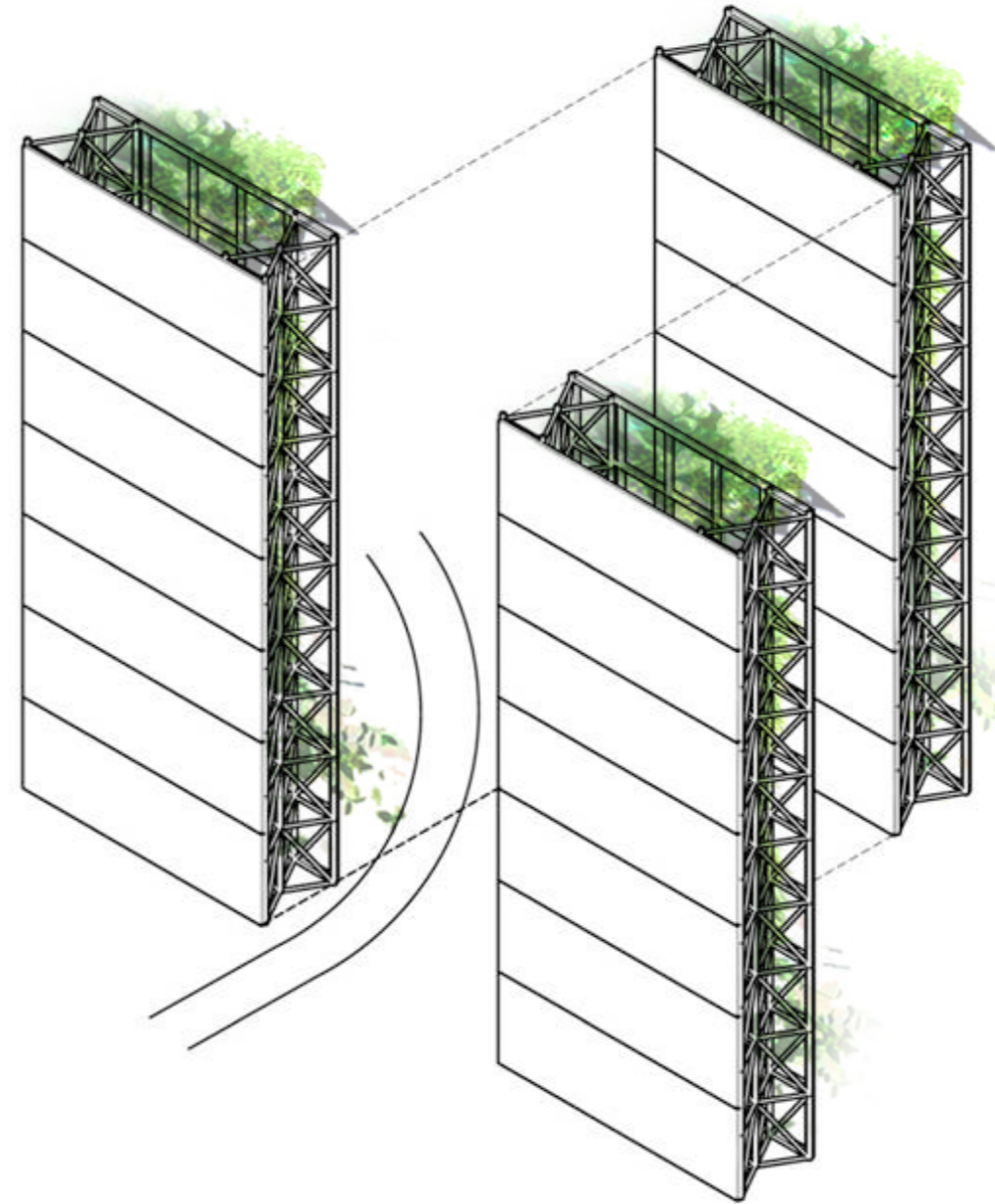
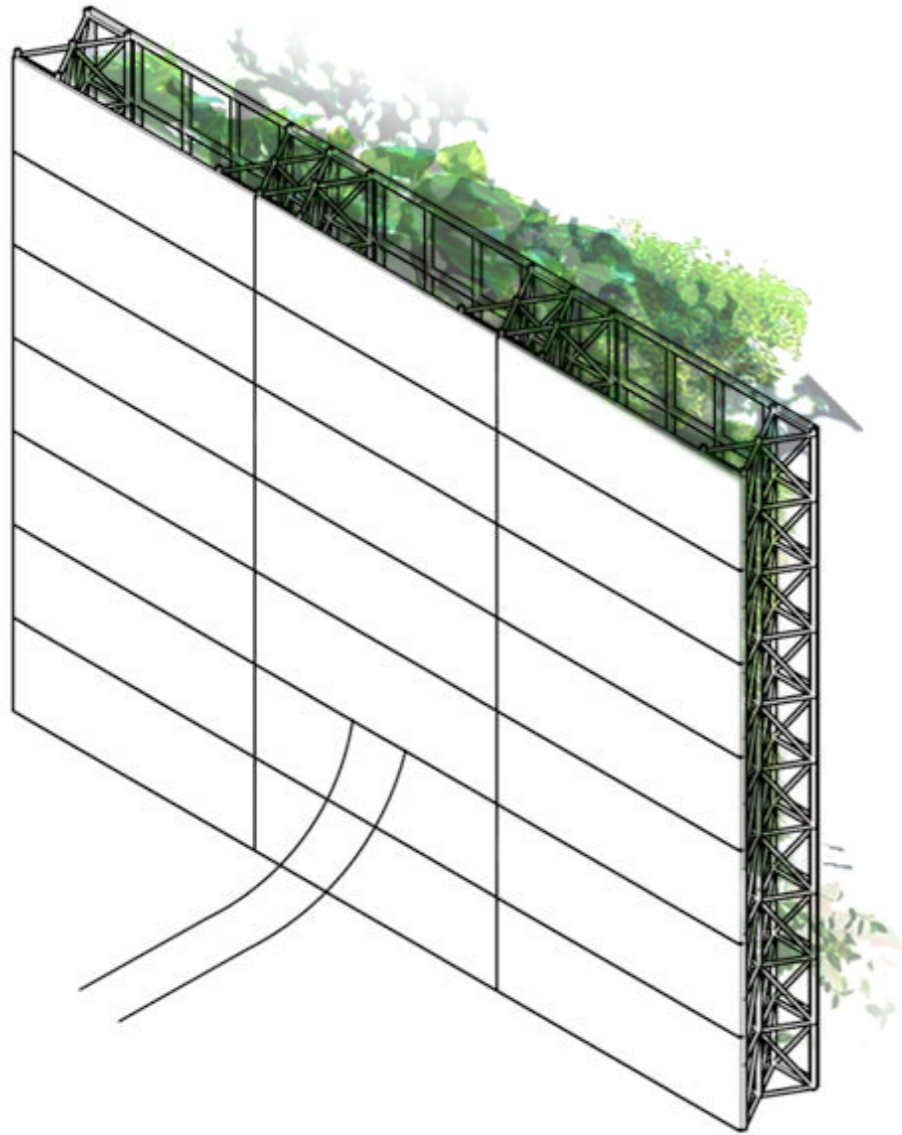


MONUMENTAL GATEWAY

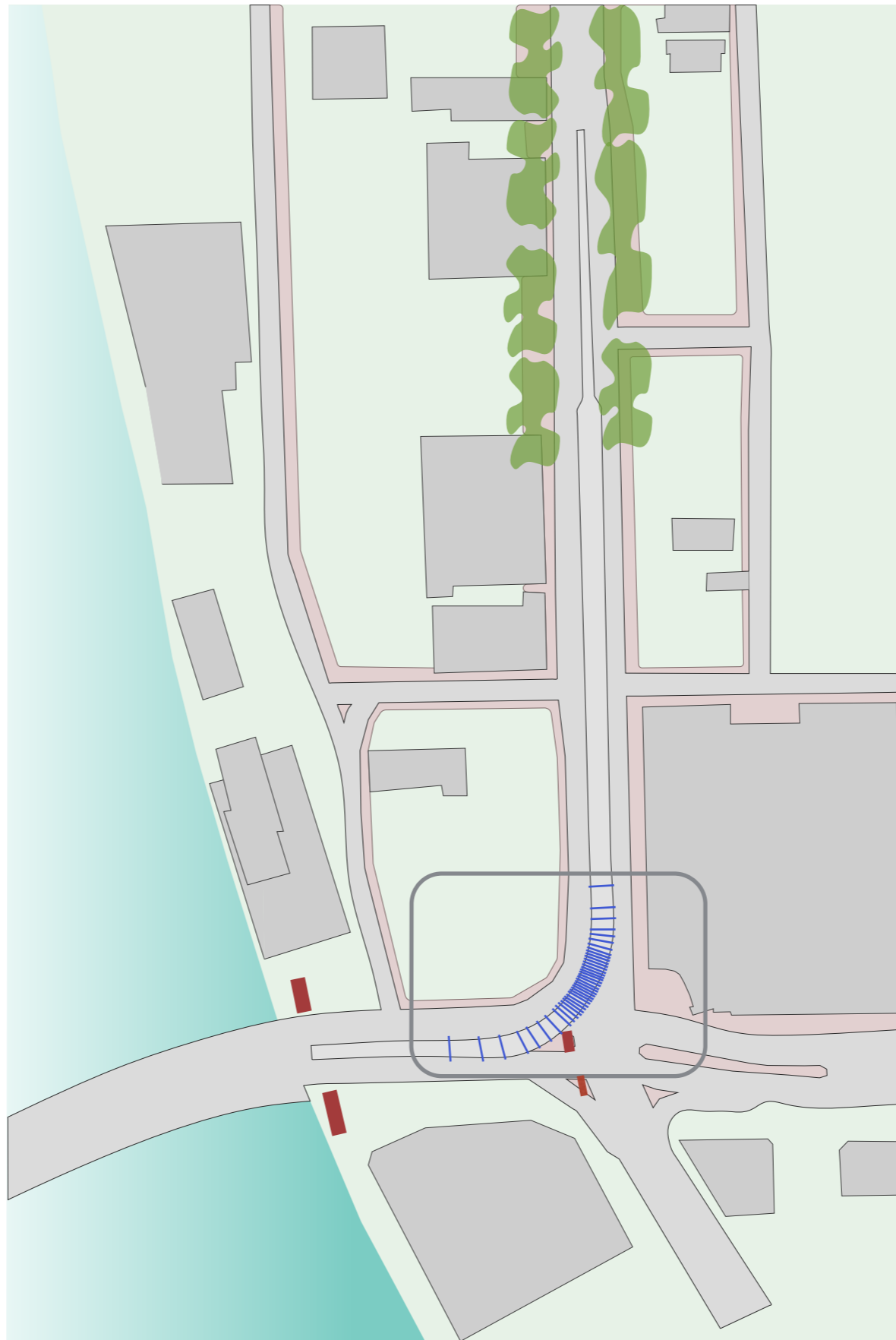


MONUMENTAL GATEWAY

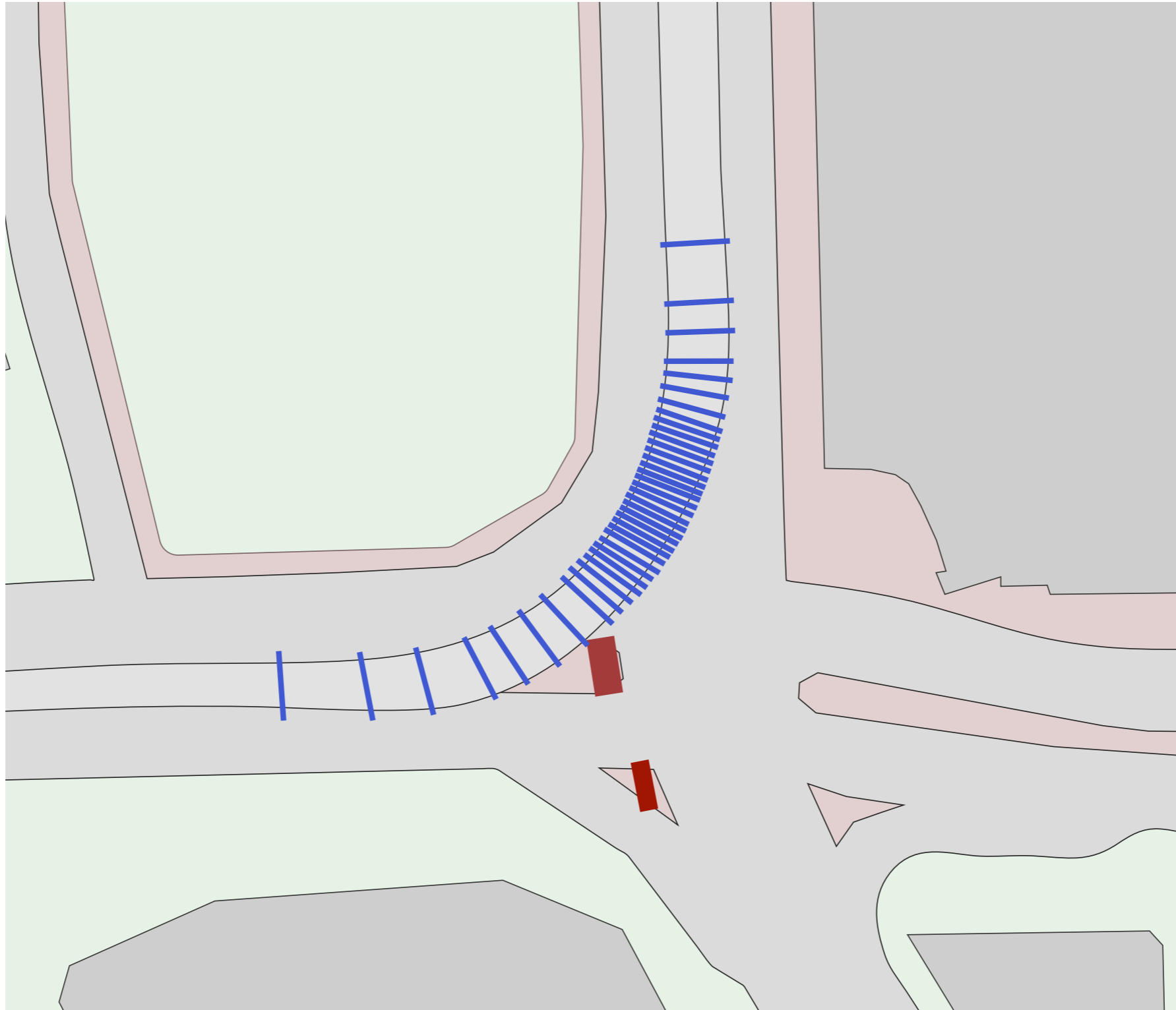




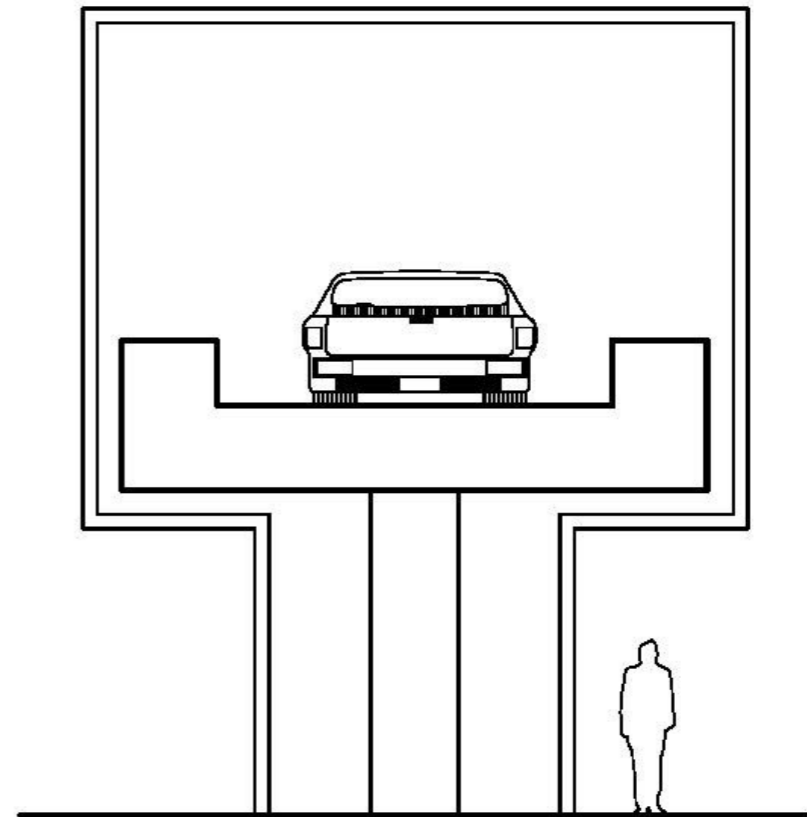
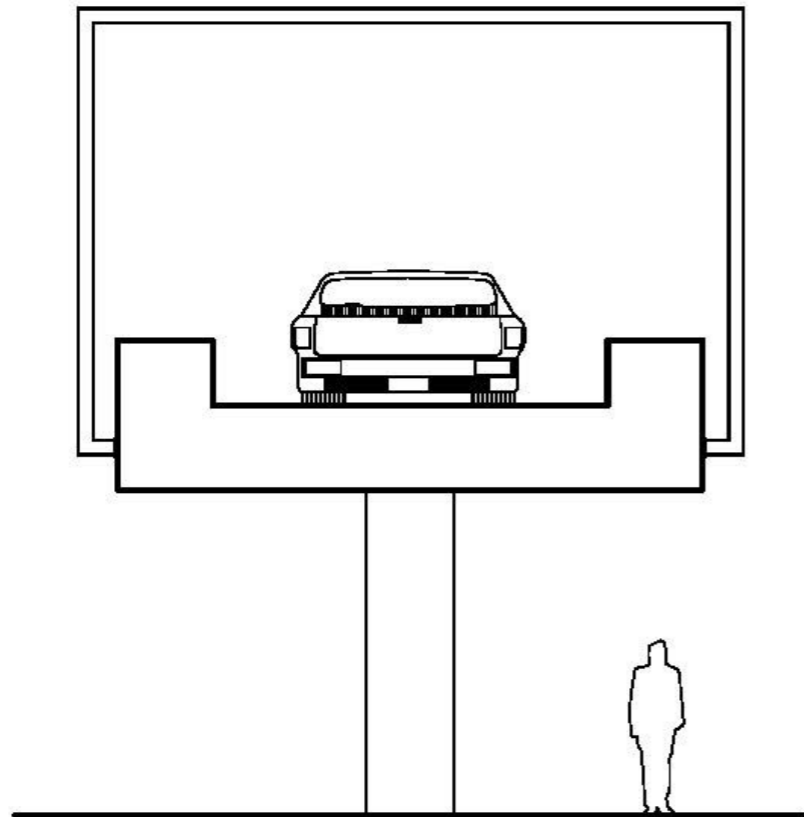
FRAMES



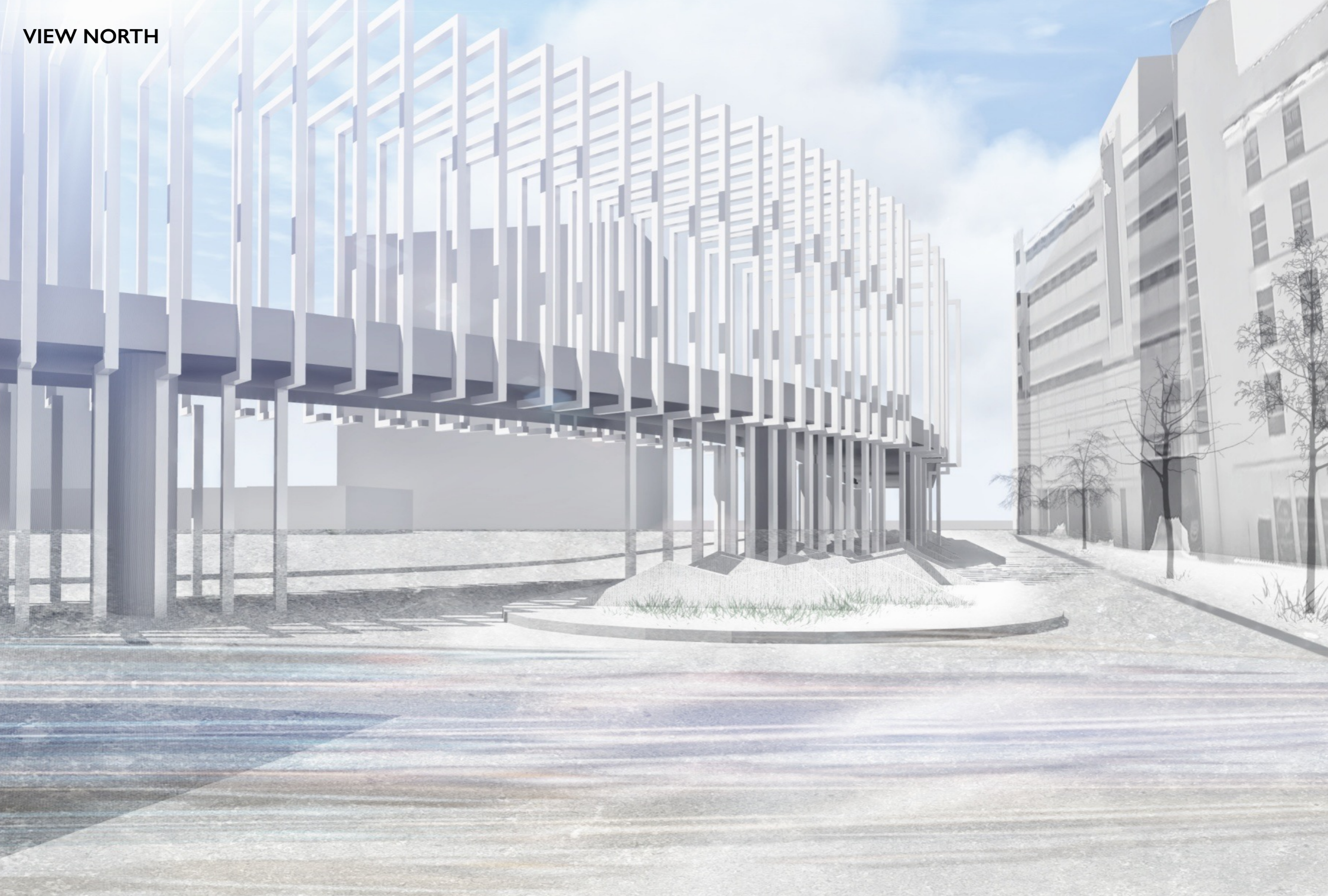
FRAMES



FLYOVER BOX OPTIONS



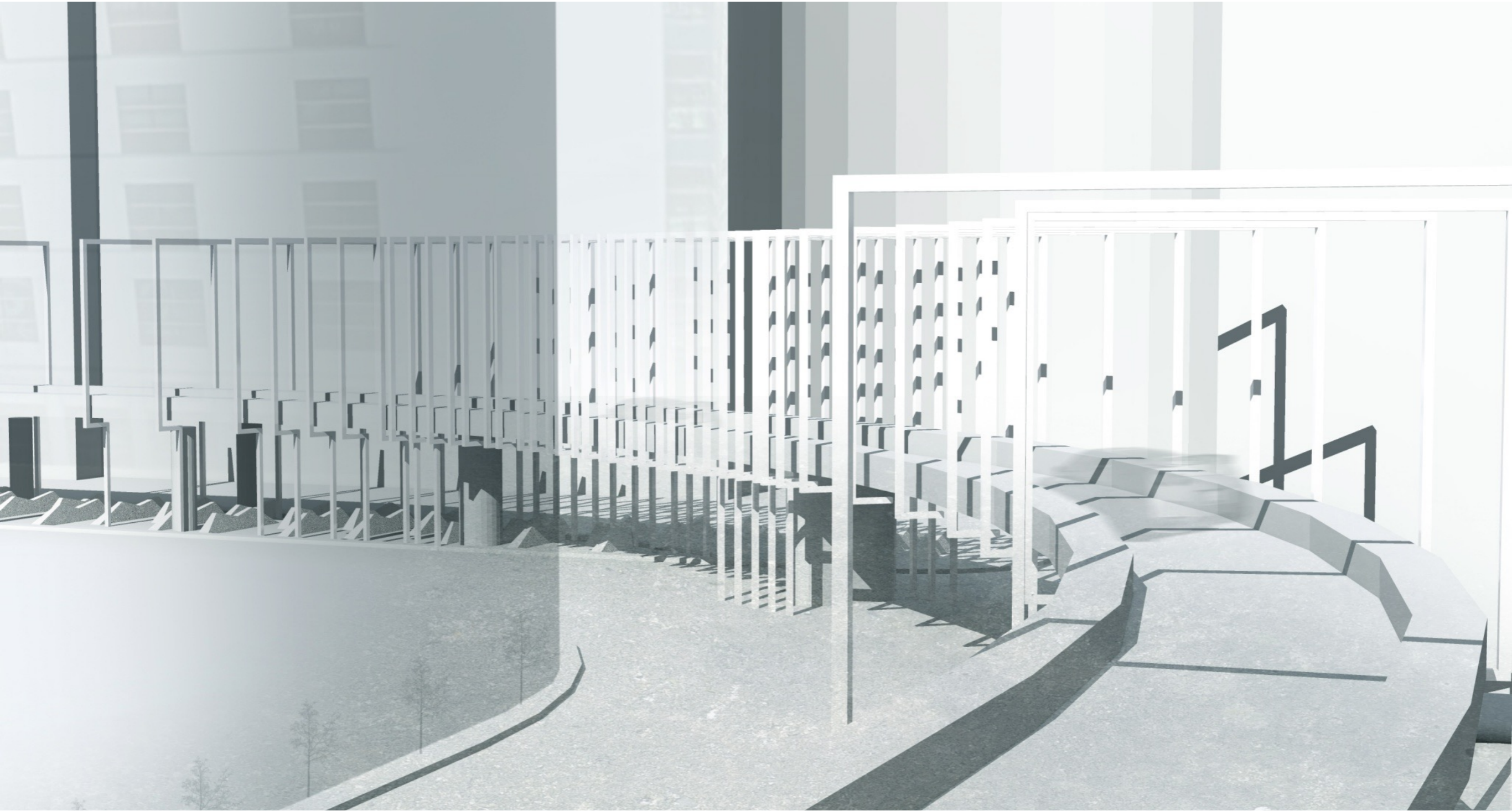
VIEW NORTH

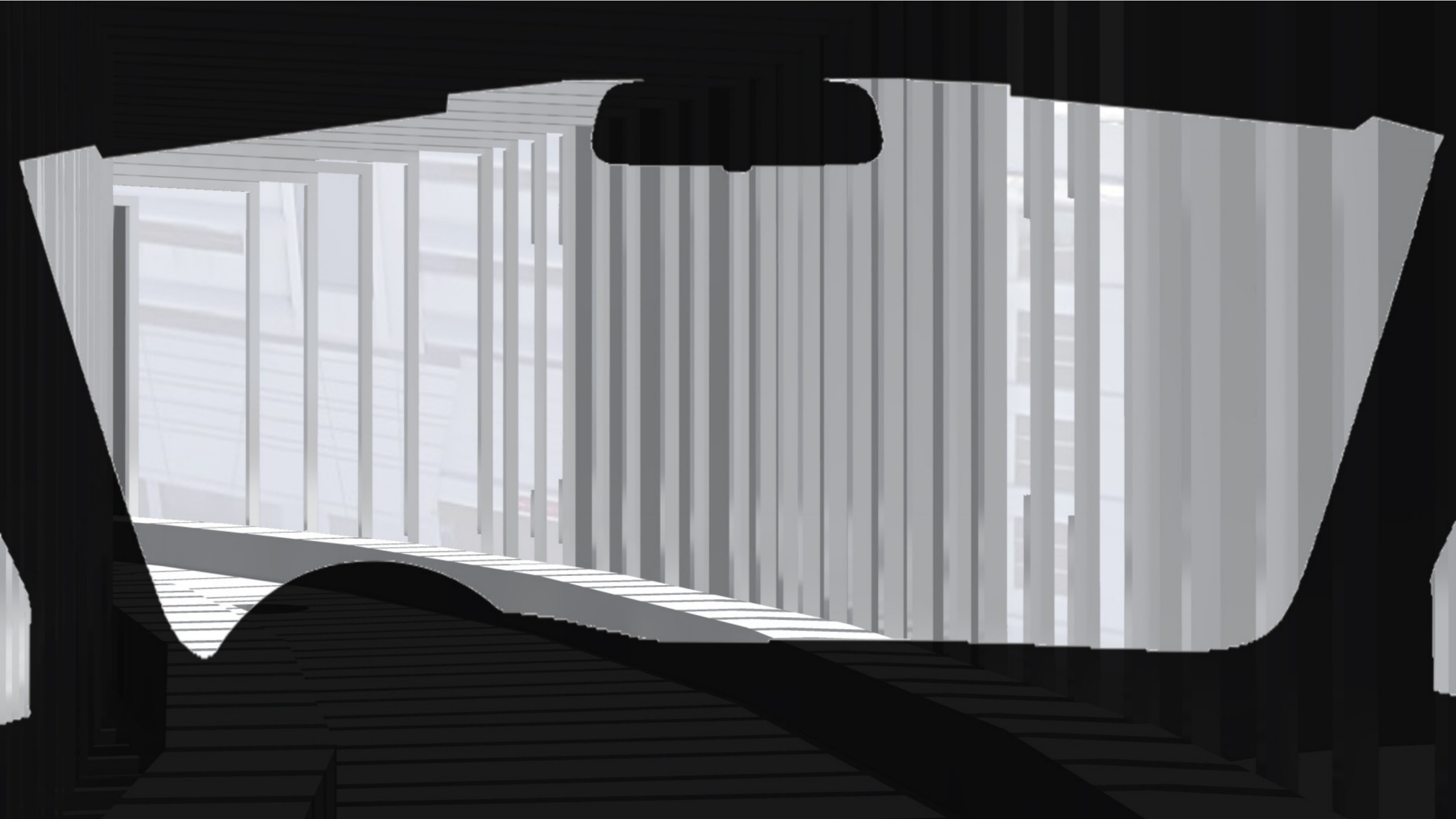


FLYOVER APPROACH



FLYOVER ELEVATED VIEW

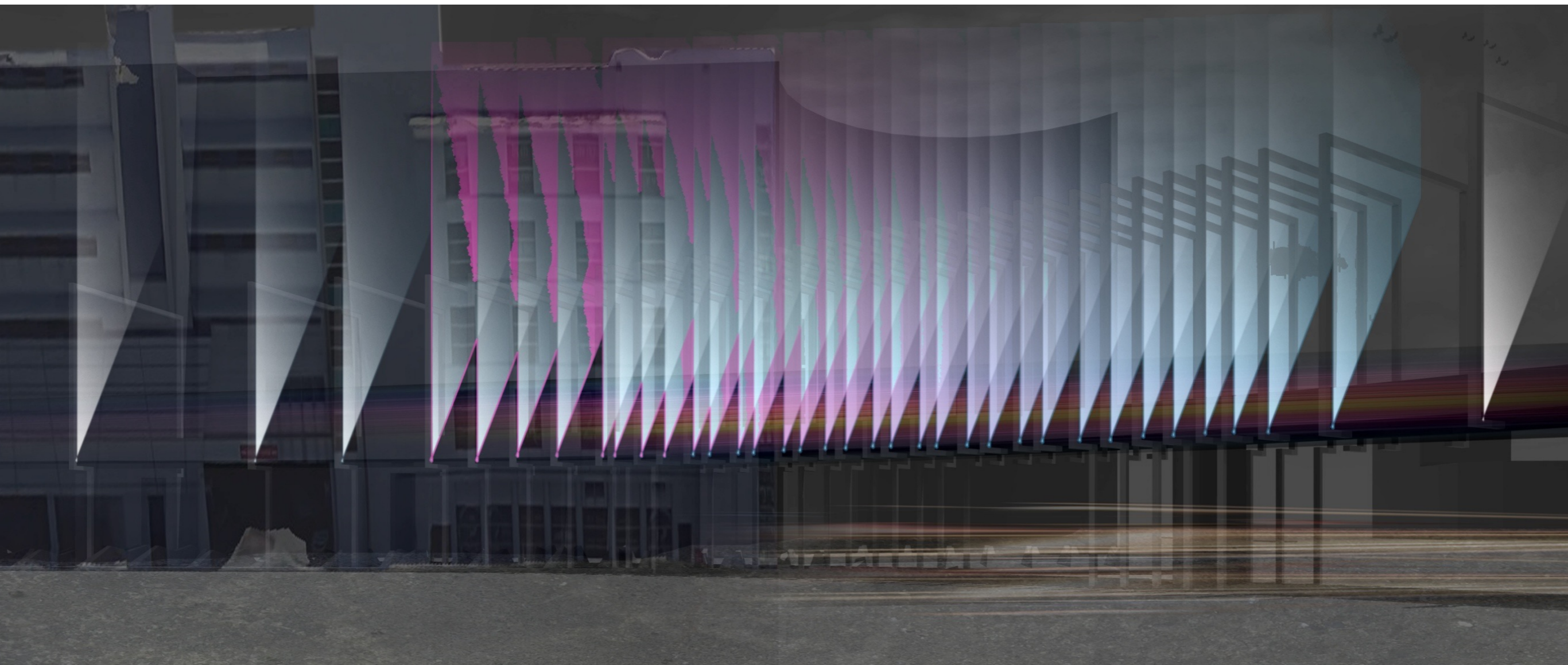




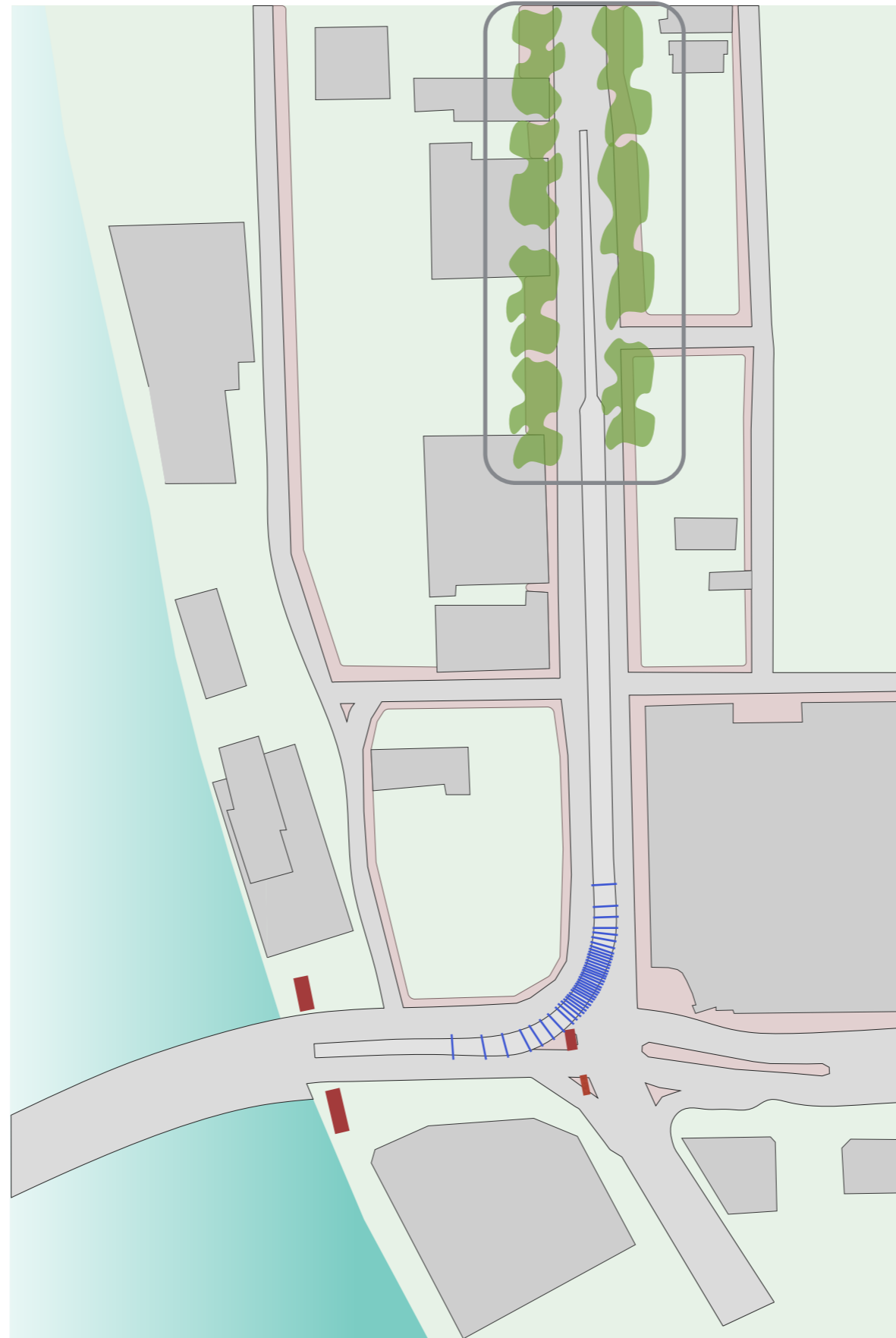


SURREY PEDESTRIAN BRIDGE | SURREY, CANADA

NIGHT ILLUMINATION



TROPICAL THRESHOLD



TROPICAL THRESHOLD

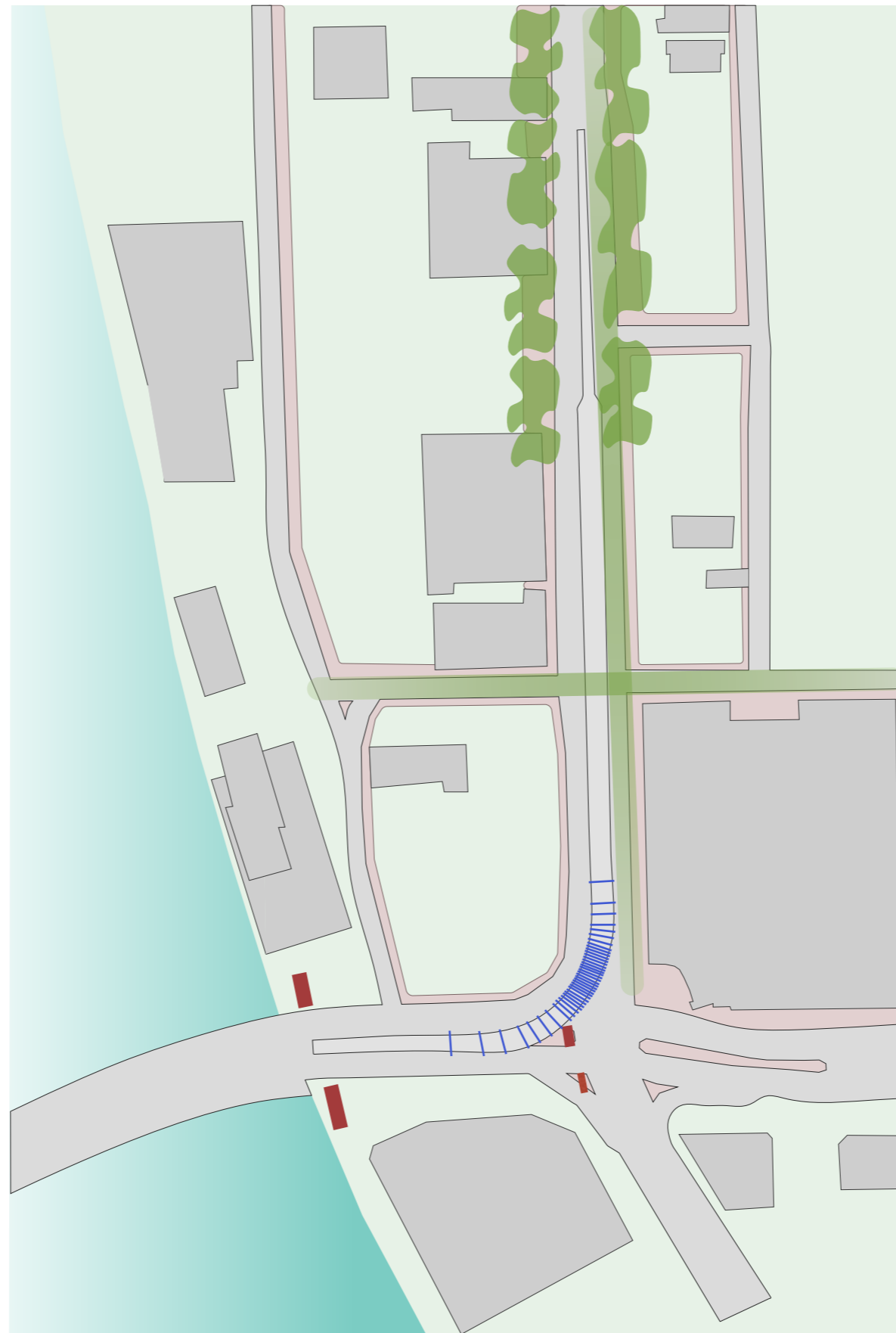


LUSH VEGETATION



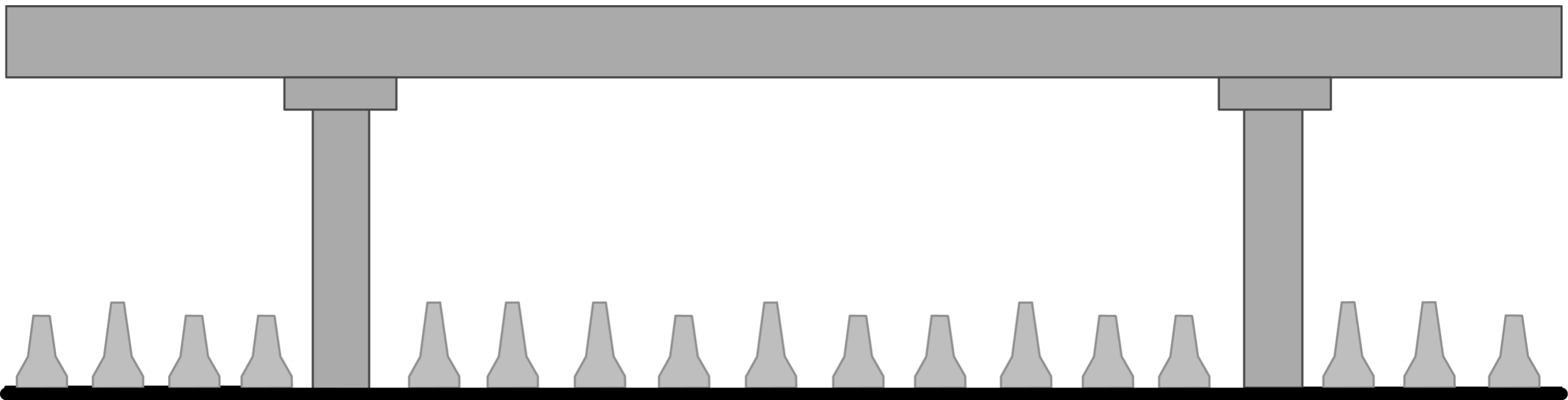


THE PEDESTRIAN EXPERIENCE



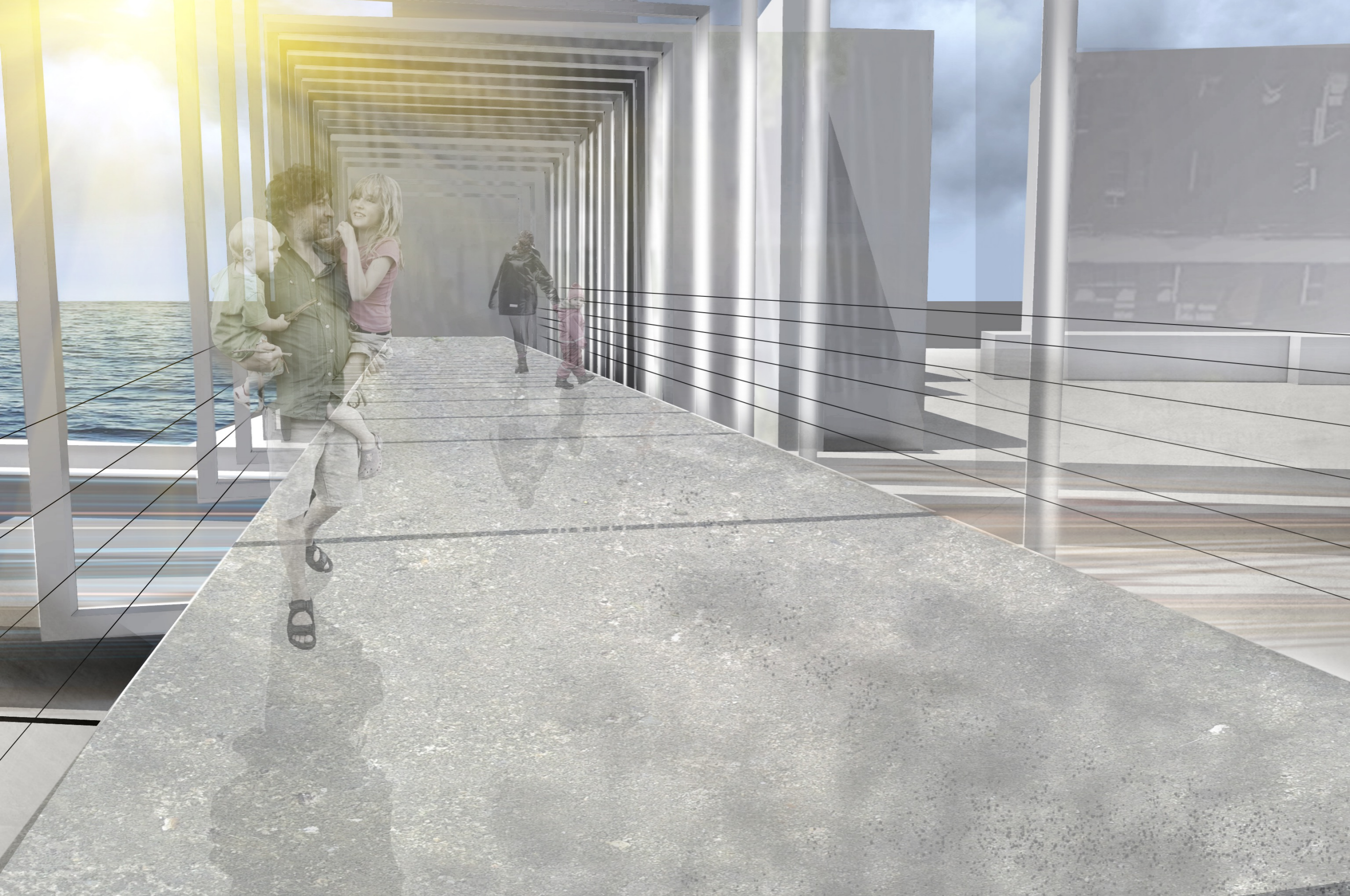
ALTON ROAD SIDEWALK ENHANCEMENT





ALTON AT 5th | VIEW NORTH







ALTON FLYOVER

Miami Beach

DESIGN TEAM

Jason Chandler • Chair, Department of Architecture

Ludovico Ferro • Architecture

Miguel Pio • Architecture

Roberto Rovira • Chair, Department of Landscape Architecture + Environmental and Urban Design

Kevin Arrieta • Landscape Architecture + Environmental and Urban Design

Malone Matson • Landscape Architecture + Environmental and Urban Design

Jacek J. Kolasiński • Chair, Department of Art and Art History

Susan Maas • Art & Art History

Diana Garcia • Art & Art History