

HEBREW ACADEMY CHARRETTE

Documentation of Results

Thursday, March 14- Friday, March 15

FIU Student Participants

Carlos Fernandez

Gergana Panteva

Jeanne Canto

Gio Guadarrama

Andrea Perrelli

Roxana Macias

Ana Echeverri

Crismary Pascrella

Camila Borges

FIU Faculty Participants

Claudia Busch, Marilys Nepomechie, John Stuart

CHARRETTE AGENDA

Thursday 3/13/14 (Everyone)

- 9AM-12 Meet at the Hebrew Academy to review site, gather site photos, take basic measurements, discuss project with stakeholders. [Hebrew Academy]
- 12-1PM Lunch at the Miami Beach Urban Studios. [MBUS]
- 1PM-7PM The teams return to the Miami Beach Urban Studios to work. Any necessary base drawings for the renderings are located and put together in a common file folder. As a group we consider and sketch as many options as possible. (Teams are not yet formed at this point.) [MBUS Studios]
- 8PM Working pizza dinner at the Miami Beach Urban Studio [MBUS Studios]
- 7-9PM Review of photos, base drawings, and sketch ideas. Three building ideas are selected to be pursued. Three teams are formed. [MBUS 475]

Friday 3/14/14 (Everyone)

- 9AM-12noon Each of the three teams develops the project through 2D and 3D renderings. [MBUS Studios]
- 12-1PM Working lunch at the Miami Beach Urban Studios [MBUS Studios]
- 1-3PM Public design review and forum to discuss the sketches, consider options, etc. with stakeholders. [MBUS 475]
- 3-5PM Working session to incorporate public design review ideas into the drawings and renderings [MBUS Studios]

Weekend (Selected students based upon skills, interests, and availability) (Home/online)

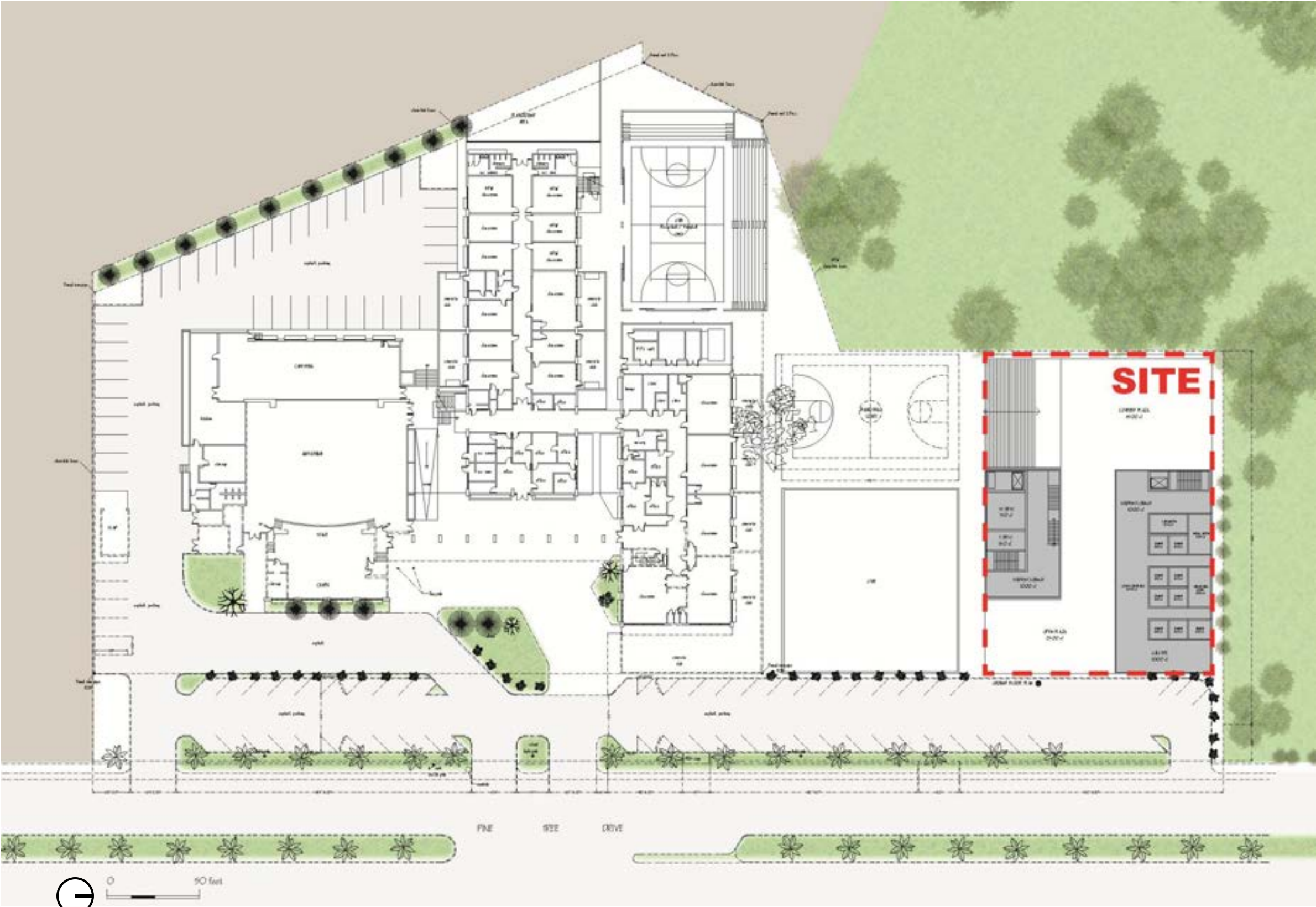
Monday or Wednesday or Friday (one day) 3/17 or 3/19 or 3/21 (Selected students, based upon skills, interests, and availability) TBD based upon student/faculty responses.

- 9-3PM Final drawings and renderings for the presentation are completed and presentation reviewed by stakeholders as necessary. [MBUS Studios]
- 12 noon Working lunch at the Miami Beach Urban Studios [MBUS Studios]
- 3-5PM Public Presentation of the three schemes, the research, and the renderings. Robert Danial receives a complete digital set of everything produced. Up to five copies of a final hard copy of the presentations may be produced at no extra charge if desired at a later date no later than two weeks from the end of the charrette. [Hebrew Academy]

Overview (SITE)

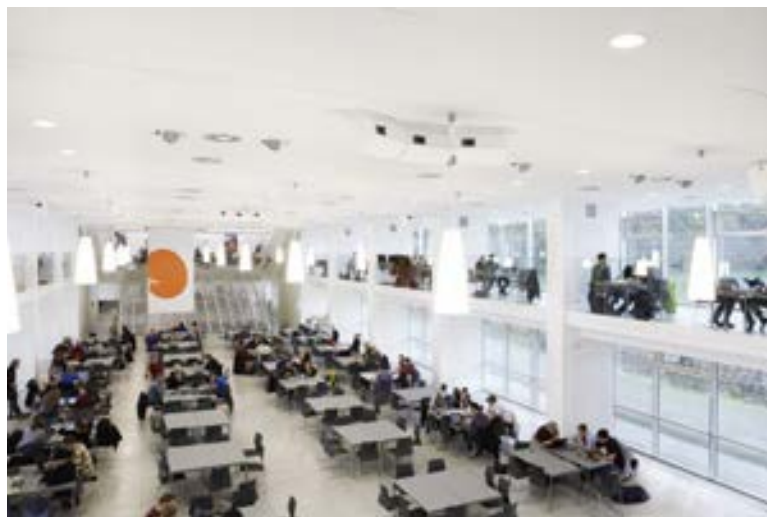


Overview (SITE PLAN)



Shifting Voids

Idea of Flexibility and Community



Idea of Collective thinking



Idea of Openness and Views

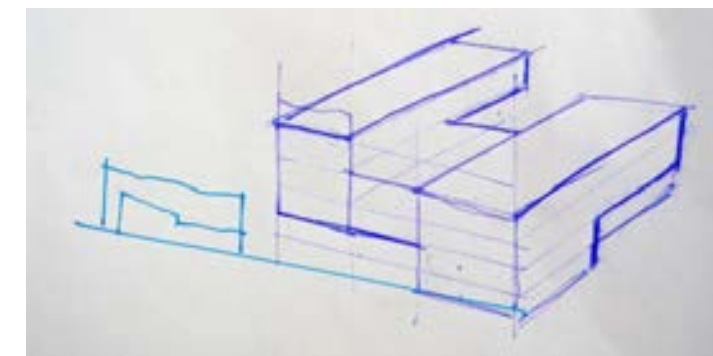
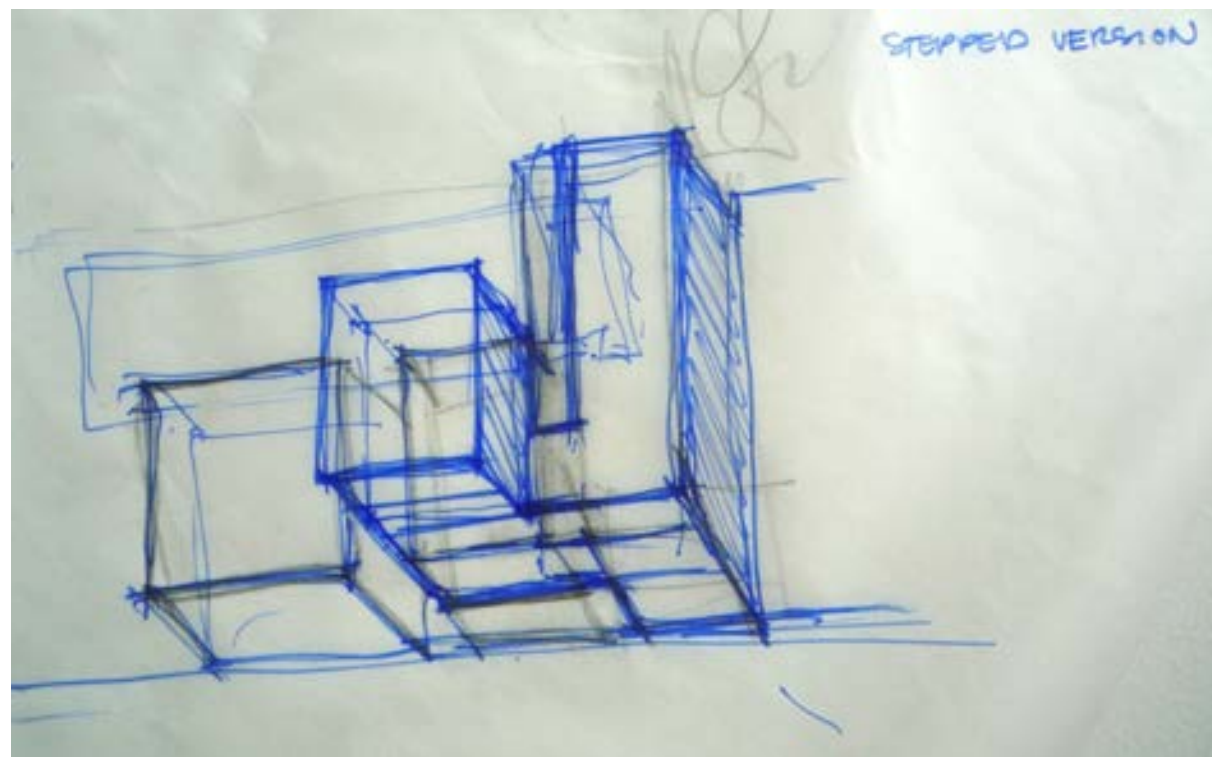
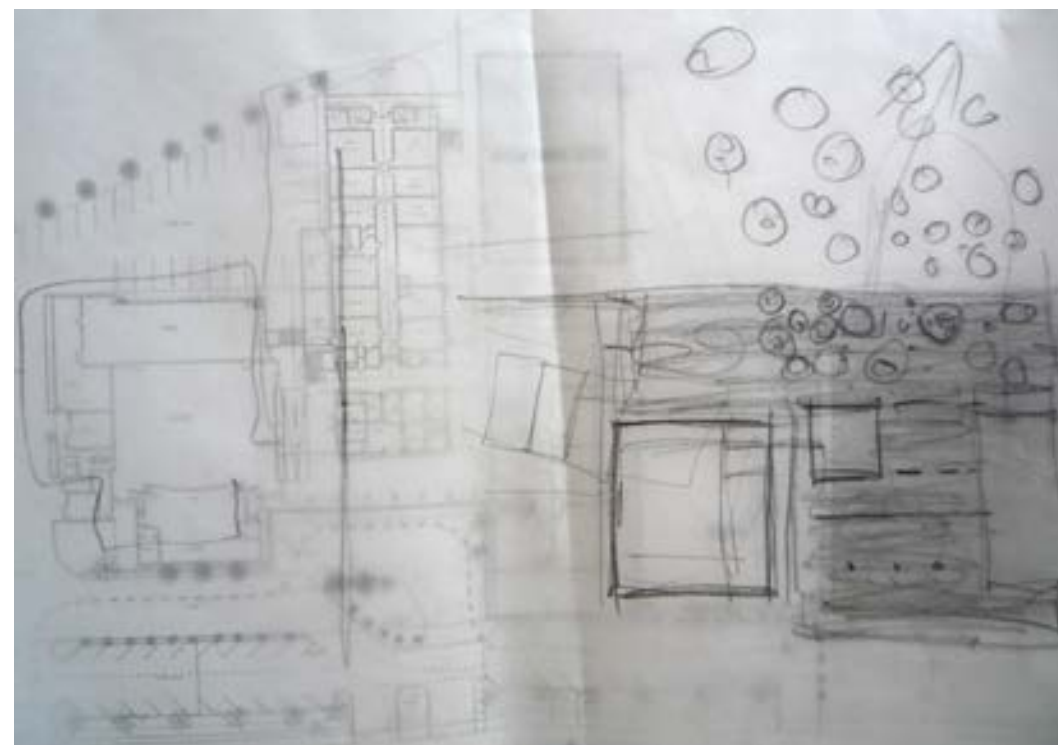
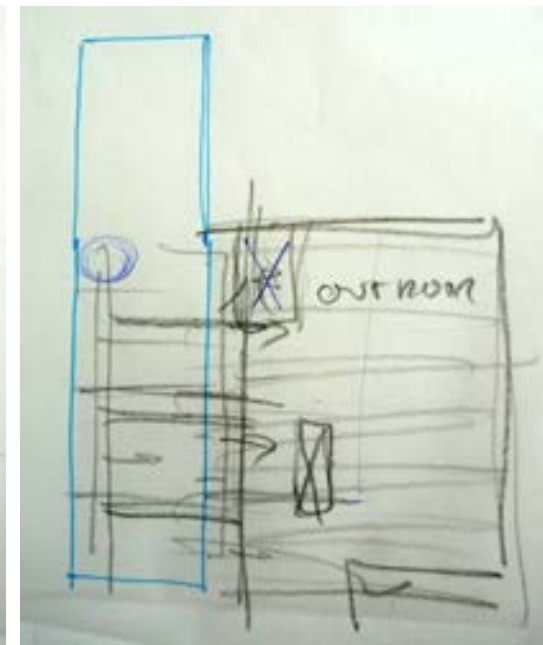
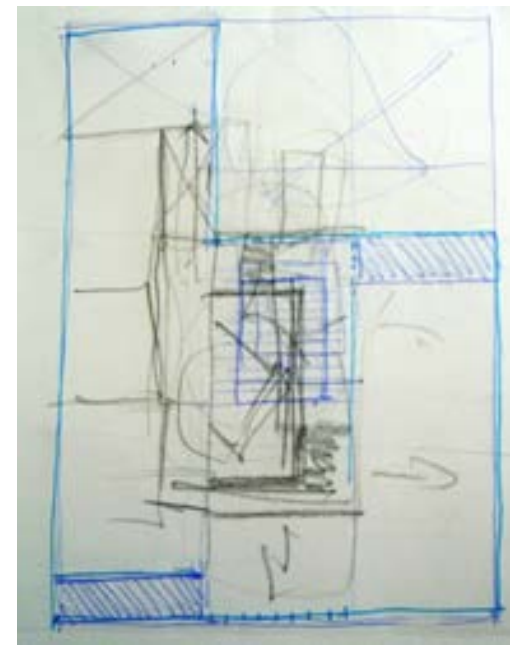
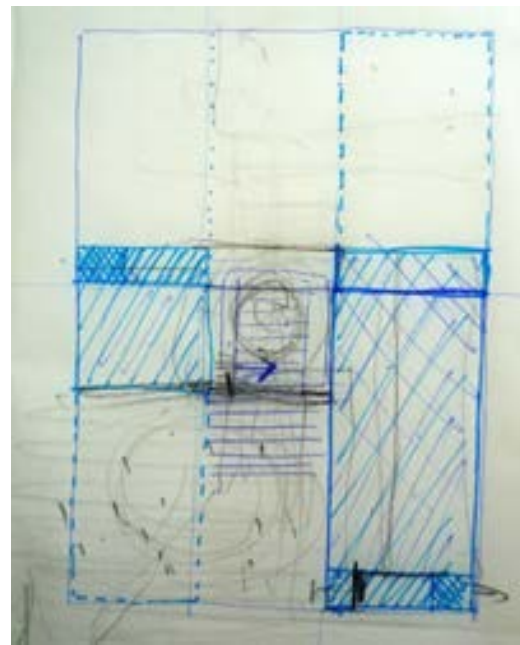
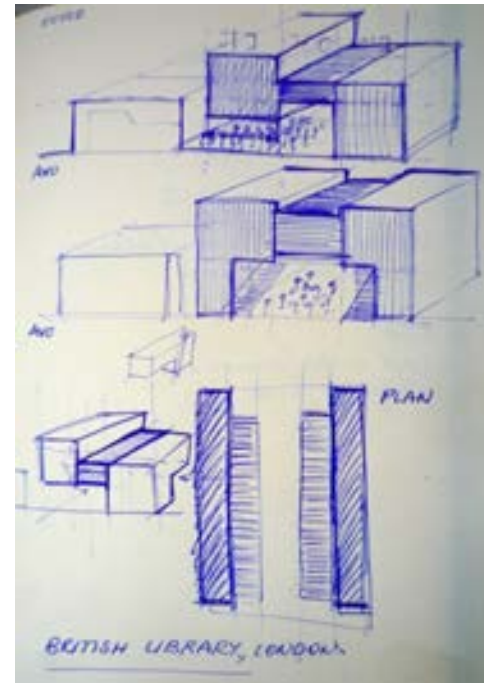
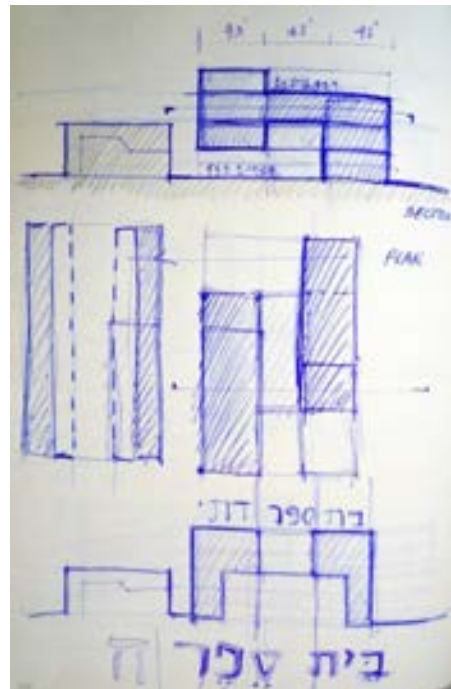


Idea of the 3 parts



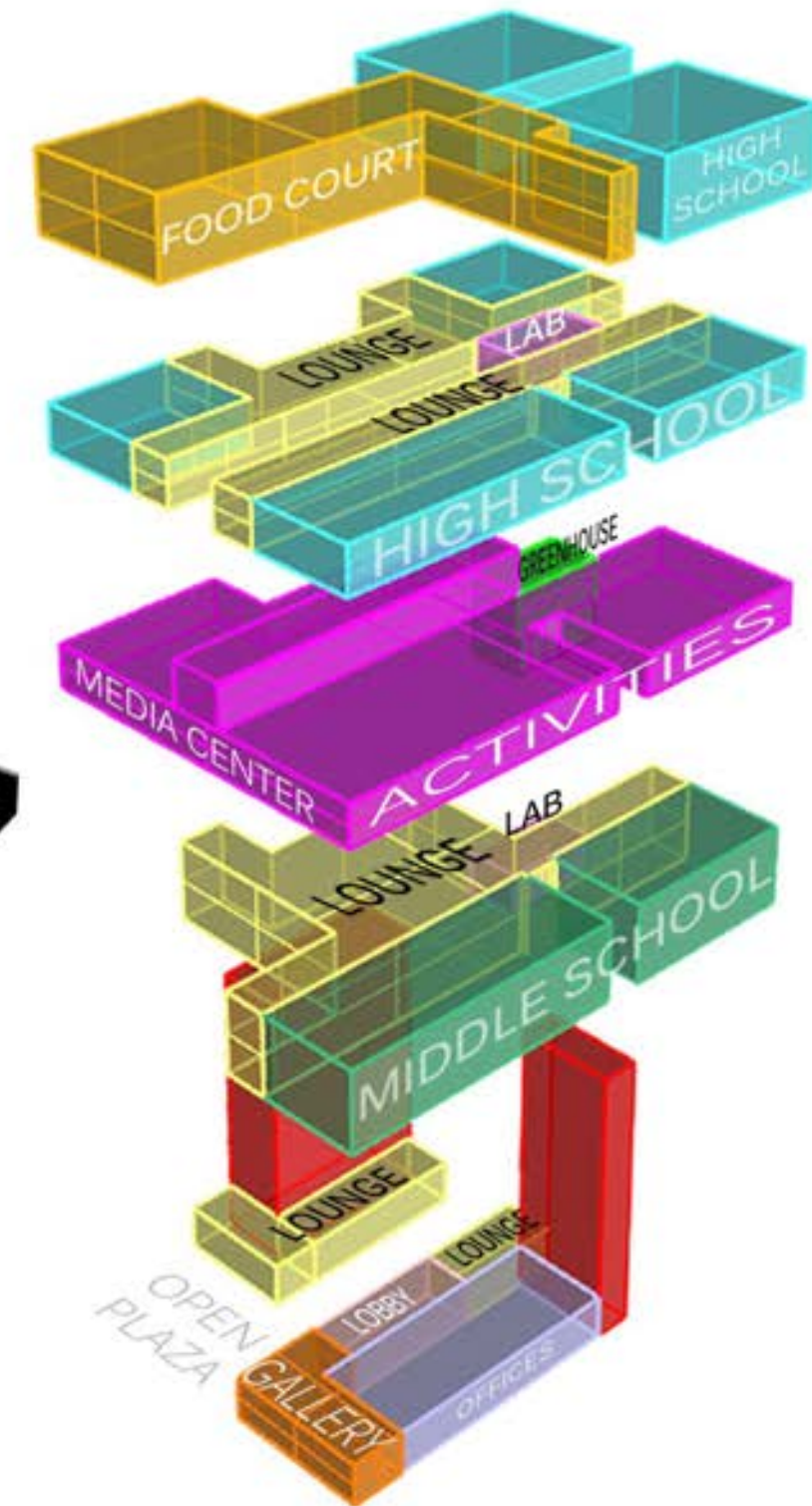
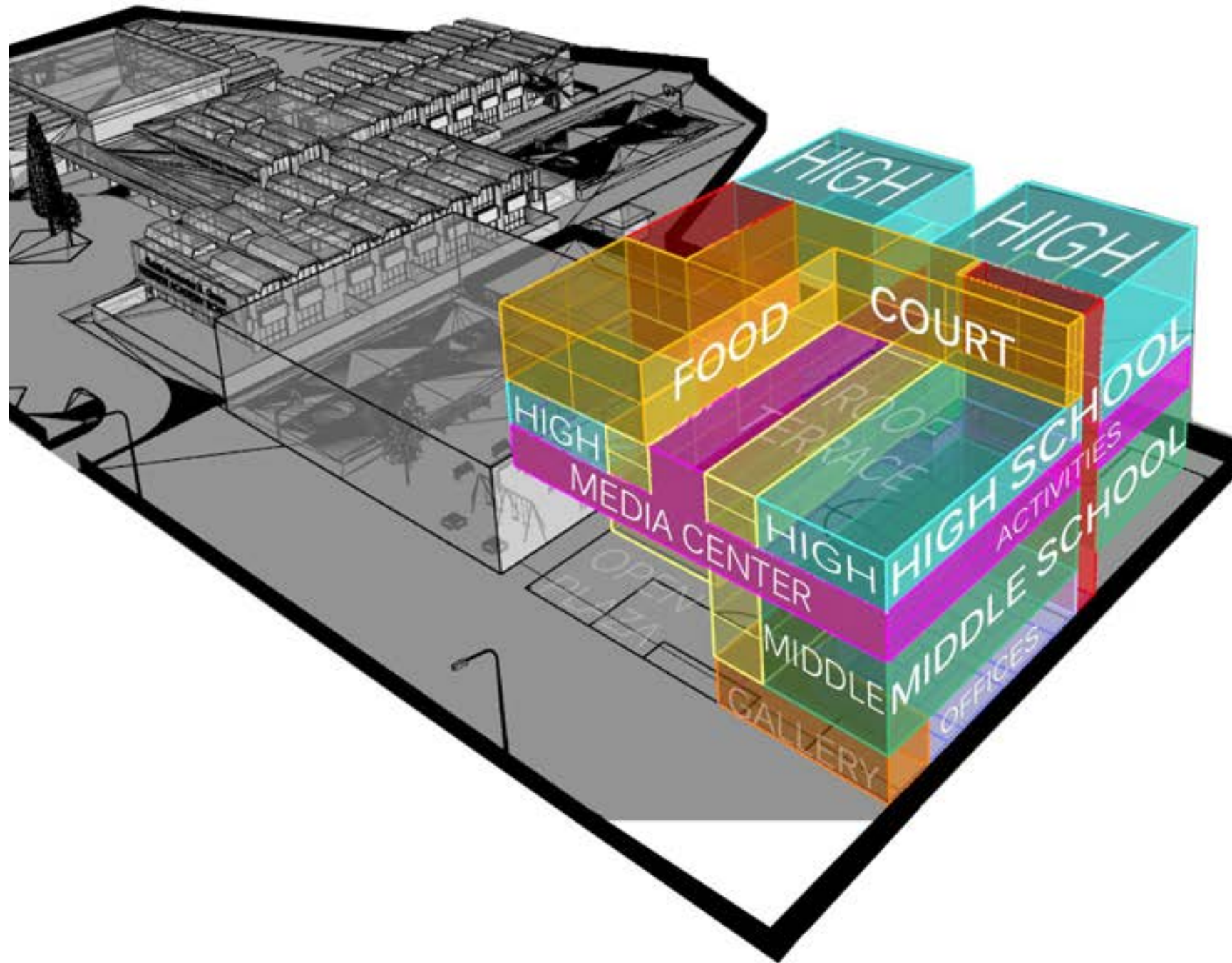
Shifting Voids

Initial Design Sketches



Shifting Voids

3D Axon



Shifting Voids

Aerial Fisheye View



Shifting Voids

View from Pine Tree Drive



Shifting Voids

View North from School

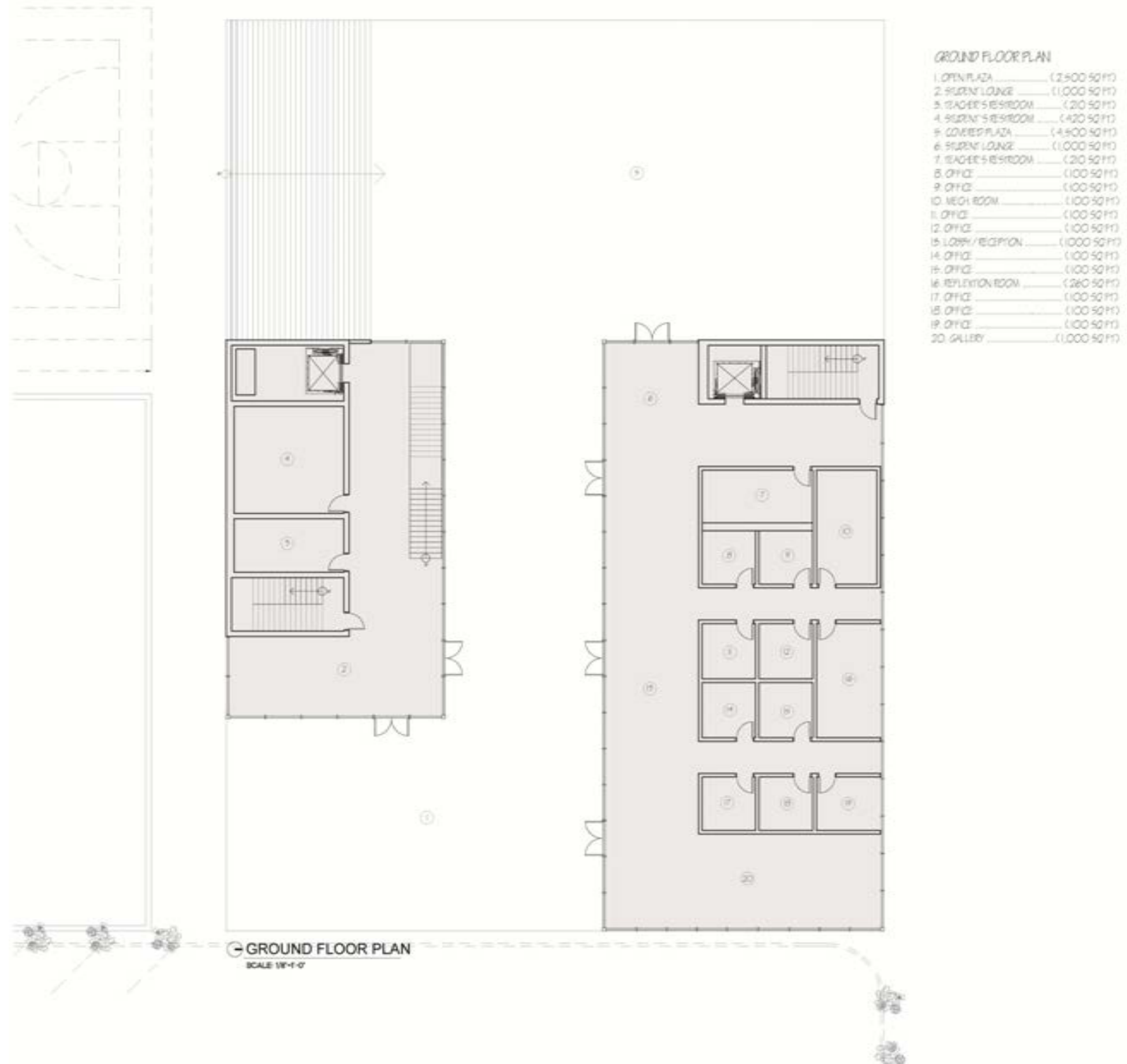


Shifting Voids

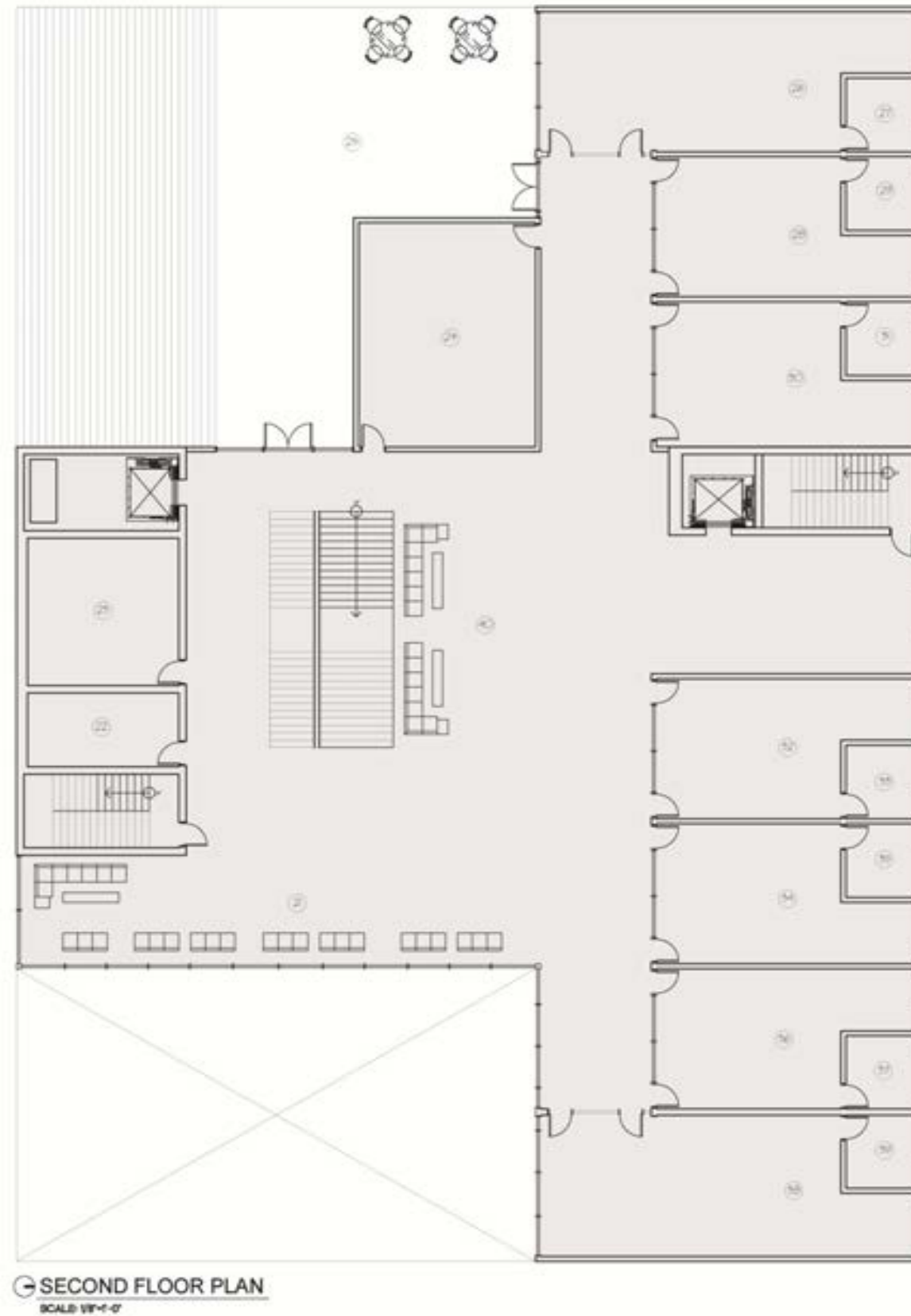
3D Section



Shifting Voids



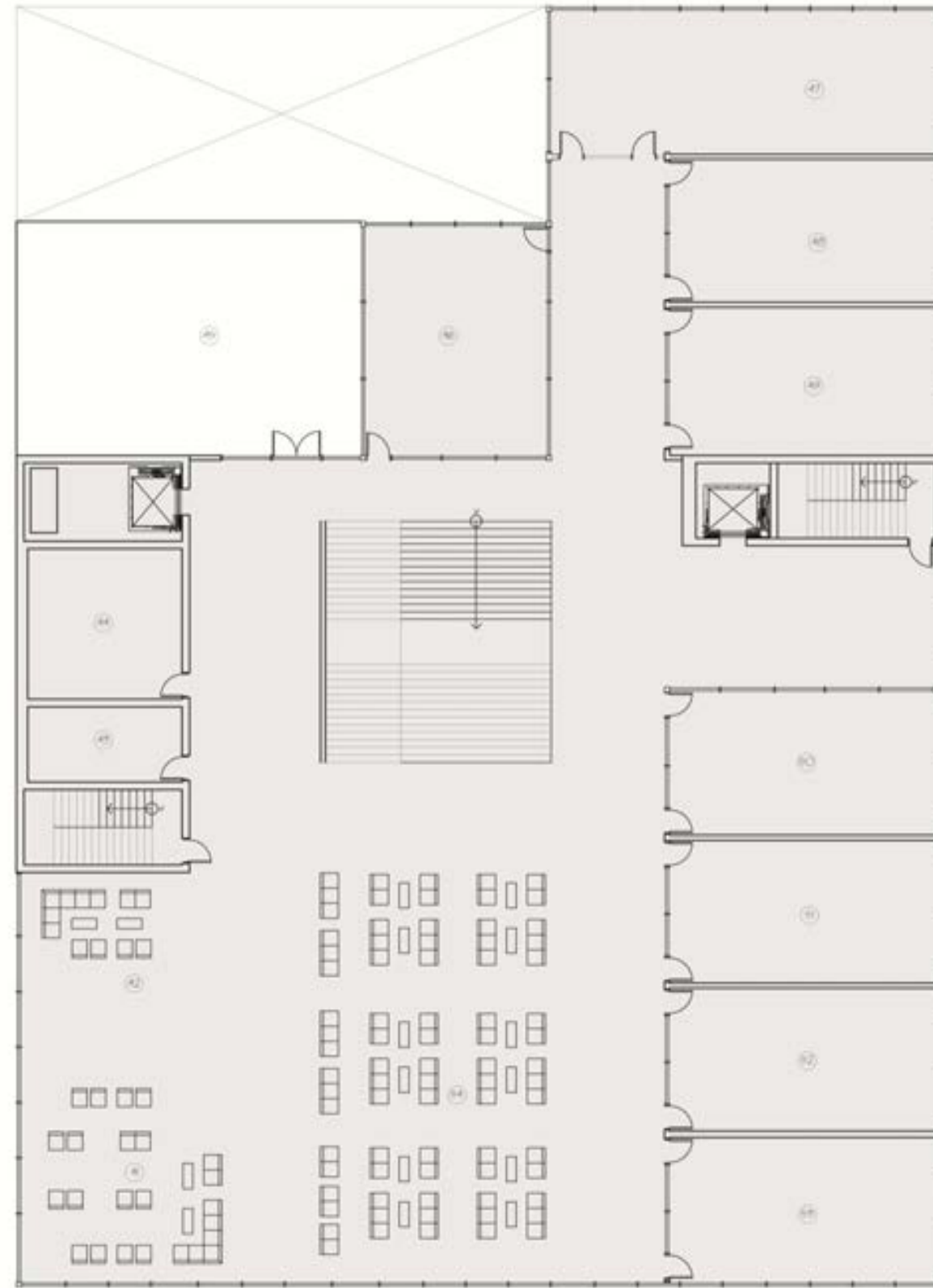
Shifting Voids



SECOND FLOOR PLAN

- 21. INDIVIDUAL STUDY LOUNGE (1,000 SQ FT)
- 22. TEACHER'S RESTROOM (210 SQ FT)
- 23. STUDENT'S RESTROOM (420 SQ FT)
- 24. MIDDLE SCHOOL SCIENCE LAB (750 SQ FT)
- 25. OPEN PLAZA (1,800 SQ FT)
- 26. MIDDLE SCHOOL STUDIO (670 SQ FT)
- 27. TEACHER'S OFFICE (100 SQ FT)
- 28. MIDDLE SCHOOL STUDIO (670 SQ FT)
- 29. TEACHER'S OFFICE (100 SQ FT)
- 30. MIDDLE SCHOOL STUDIO (670 SQ FT)
- 31. TEACHER'S OFFICE (100 SQ FT)
- 32. MIDDLE SCHOOL STUDIO (670 SQ FT)
- 33. TEACHER'S OFFICE (100 SQ FT)
- 34. MIDDLE SCHOOL STUDIO (670 SQ FT)
- 35. TEACHER'S OFFICE (100 SQ FT)
- 36. MIDDLE SCHOOL STUDIO (670 SQ FT)
- 37. TEACHER'S OFFICE (100 SQ FT)
- 38. MIDDLE SCHOOL STUDIO (670 SQ FT)
- 39. TEACHER'S OFFICE (100 SQ FT)
- 40. COLLABORATIVE STUDENT LOUNGE (1,900 SQ FT)

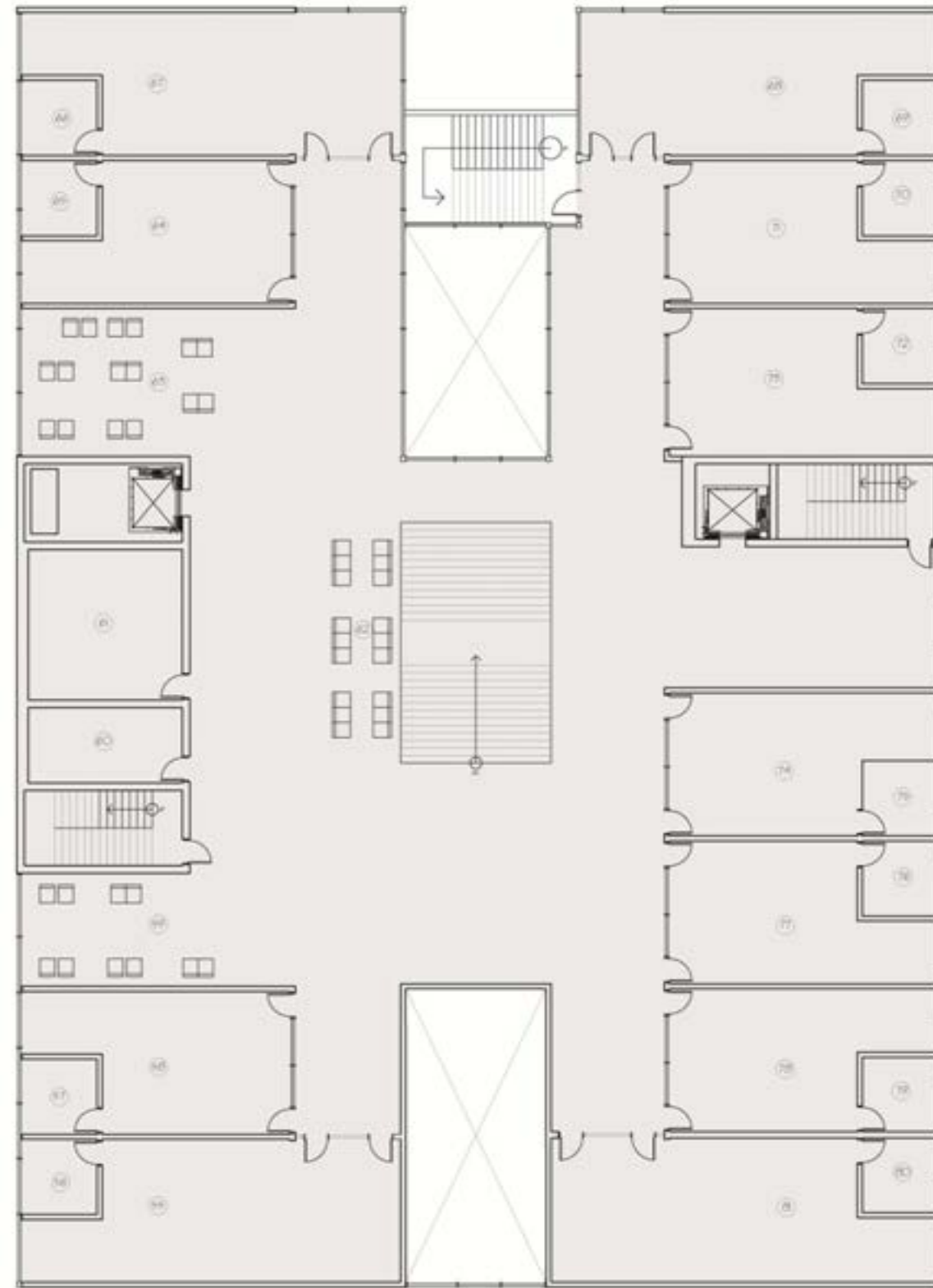
Shifting Voids



- THIRD FLOOR PLAN**
- 41. DIGITAL CENTER (1,000 SQ FT)
 - 42. STUDENT LOUNGE (1,000 SQ FT)
 - 43. TEACHER'S RESTROOM ... (20 SQ FT)
 - 44. STUDENT'S RESTROOM ... (120 SQ FT)
 - 45. OPEN TERRACE (1,200 SQ FT)
 - 46. GREEN HOUSE (800 SQ FT)
 - 47. IT ROOM (670 SQ FT)
 - 48. STUDENT LOUNGE (670 SQ FT)
 - 49. TEACHER LOUNGE (670 SQ FT)
 - 50. CLIP STUDIO (670 SQ FT)
 - 51. MUSIC / DANCE STUDIO ... (670 SQ FT)
 - 52. ART STUDIO (670 SQ FT)
 - 53. PRAYER SPACE (670 SQ FT)
 - 54. MEDIA CENTER (3,000 SQ FT)

⊙ THIRD FLOOR PLAN
SCALE: 1/8"=1'-0"

Shifting Voids



FOURTH FLOOR PLAN

- 55. HIGH SCHOOL STUDIO (670 SQ FT)
- 56. OFFICE (100 SQ FT)
- 57. OFFICE (100 SQ FT)
- 58. HIGH SCHOOL STUDIO (670 SQ FT)
- 59. COLLABORATION SPACE (1,500 SQ FT)
- 60. TEACHER'S RESTROOM (200 SQ FT)
- 61. STUDENT'S RESTROOM (420 SQ FT)
- 62. COLLABORATION SPACE (1,500 SQ FT)
- 63. COLLABORATION SPACE (1,500 SQ FT)
- 64. HIGH SCHOOL STUDIO (670 SQ FT)
- 65. OFFICE (100 SQ FT)
- 66. OFFICE (100 SQ FT)
- 67. HIGH SCHOOL STUDIO (670 SQ FT)
- 68. HIGH SCHOOL STUDIO (670 SQ FT)
- 69. OFFICE (100 SQ FT)
- 70. OFFICE (100 SQ FT)
- 71. HIGH SCHOOL STUDIO (670 SQ FT)
- 72. OFFICE (100 SQ FT)
- 73. HIGH SCHOOL STUDIO (670 SQ FT)
- 74. HIGH SCHOOL STUDIO (670 SQ FT)
- 75. OFFICE (100 SQ FT)
- 76. OFFICE (100 SQ FT)
- 77. HIGH SCHOOL STUDIO (670 SQ FT)
- 78. HIGH SCHOOL STUDIO (670 SQ FT)
- 79. OFFICE (100 SQ FT)
- 80. OFFICE (100 SQ FT)
- 81. HIGH SCHOOL STUDIO (670 SQ FT)

FOURTH FLOOR PLAN
SCALE 1/8"=1'-0"

Shifting Voids



FIFTH FLOOR PLAN

| | |
|-----------------------------|---------------|
| 82. KITCHEN | (800 SQ FT) |
| 83. TEACHER'S RESTROOM | (200 SQ FT) |
| 84. STUDENT'S RESTROOM | (420 SQ FT) |
| 85. HIGH SCHOOL STUDIO | (670 SQ FT) |
| 86. OFFICE | (100 SQ FT) |
| 87. HIGH SCHOOL STUDIO | (670 SQ FT) |
| 88. OFFICE | (100 SQ FT) |
| 89. OFFICE | (100 SQ FT) |
| 90. HIGH SCHOOL STUDIO | (670 SQ FT) |
| 91. HIGH SCHOOL STUDIO | (670 SQ FT) |
| 92. OFFICE | (100 SQ FT) |
| 93. OFFICE | (100 SQ FT) |
| 94. HIGH SCHOOL STUDIO | (670 SQ FT) |
| 95. OFFICE | (100 SQ FT) |
| 96. HIGH SCHOOL STUDIO | (670 SQ FT) |
| 97. HIGH SCHOOL SCIENCE LAB | (800 SQ FT) |
| 98. FOOD COURT | (5,000 SQ FT) |
| 99. OPEN TERRACE | (6,000 SQ FT) |

FIFTH FLOOR PLAN
SCALE 1/8"=1'-0"

Shifting Voids

Indoor Library Perspective



Shifting Voids

Front of Building

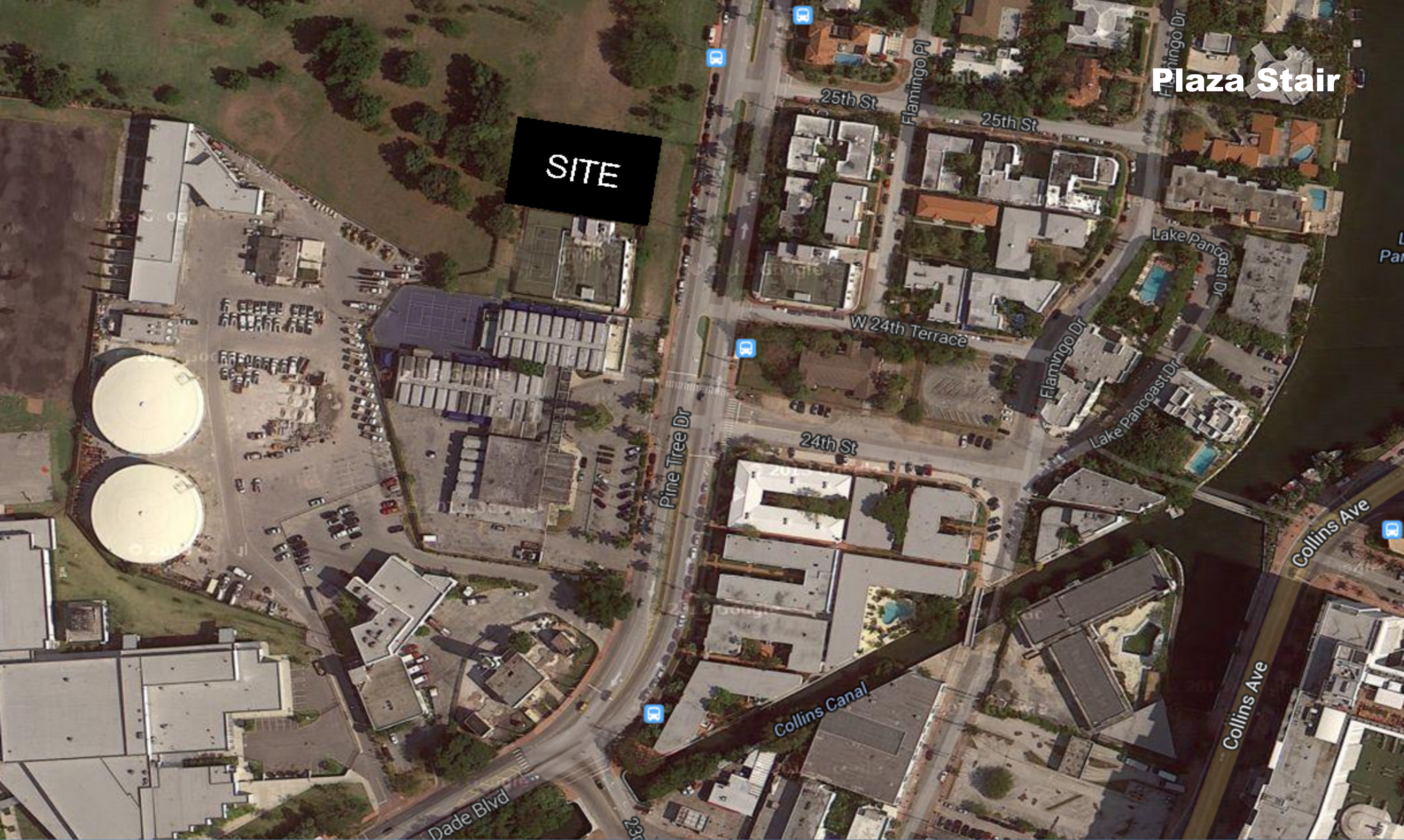


Shifting Voids

Inside Gallery Space

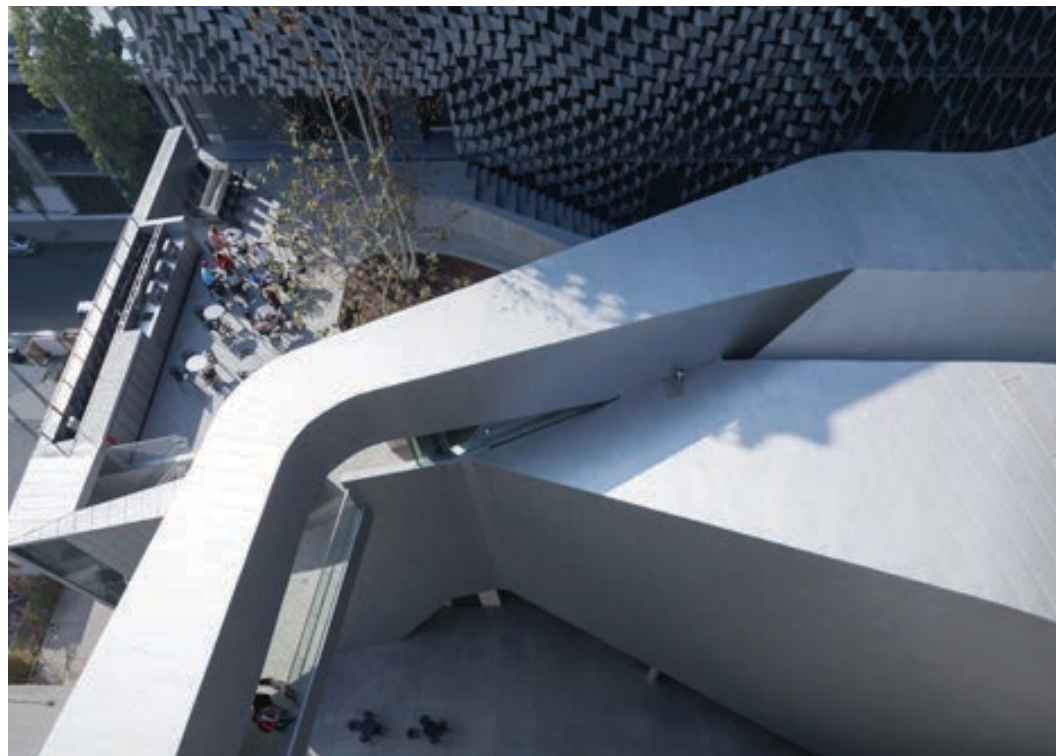
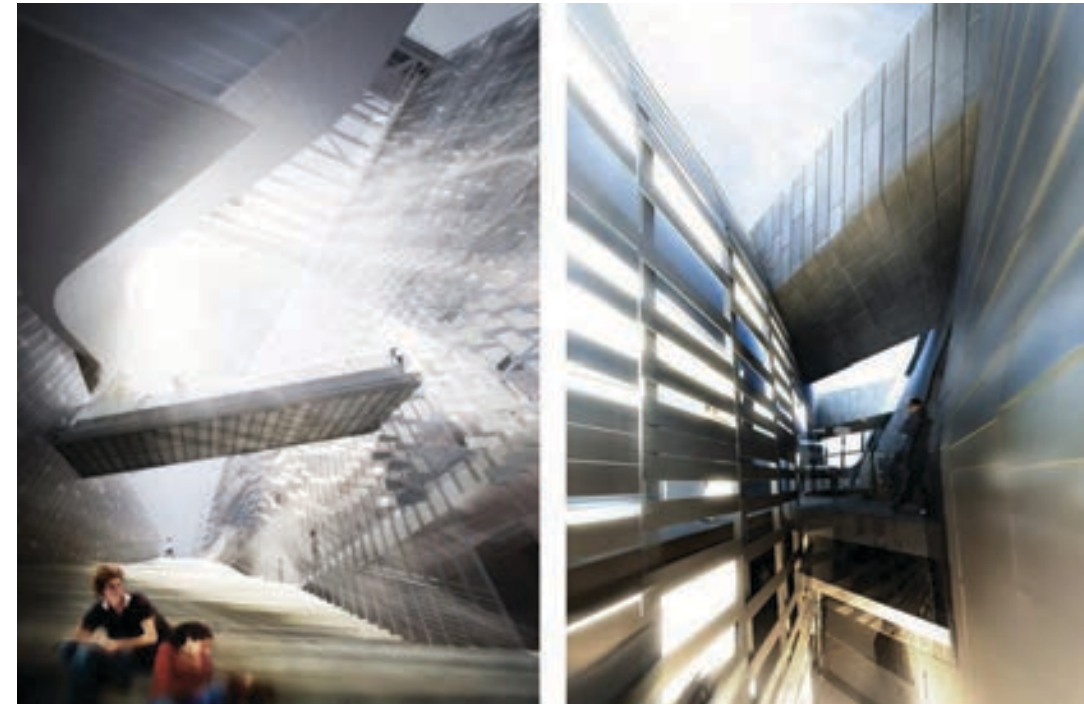


PLAZA STAIR



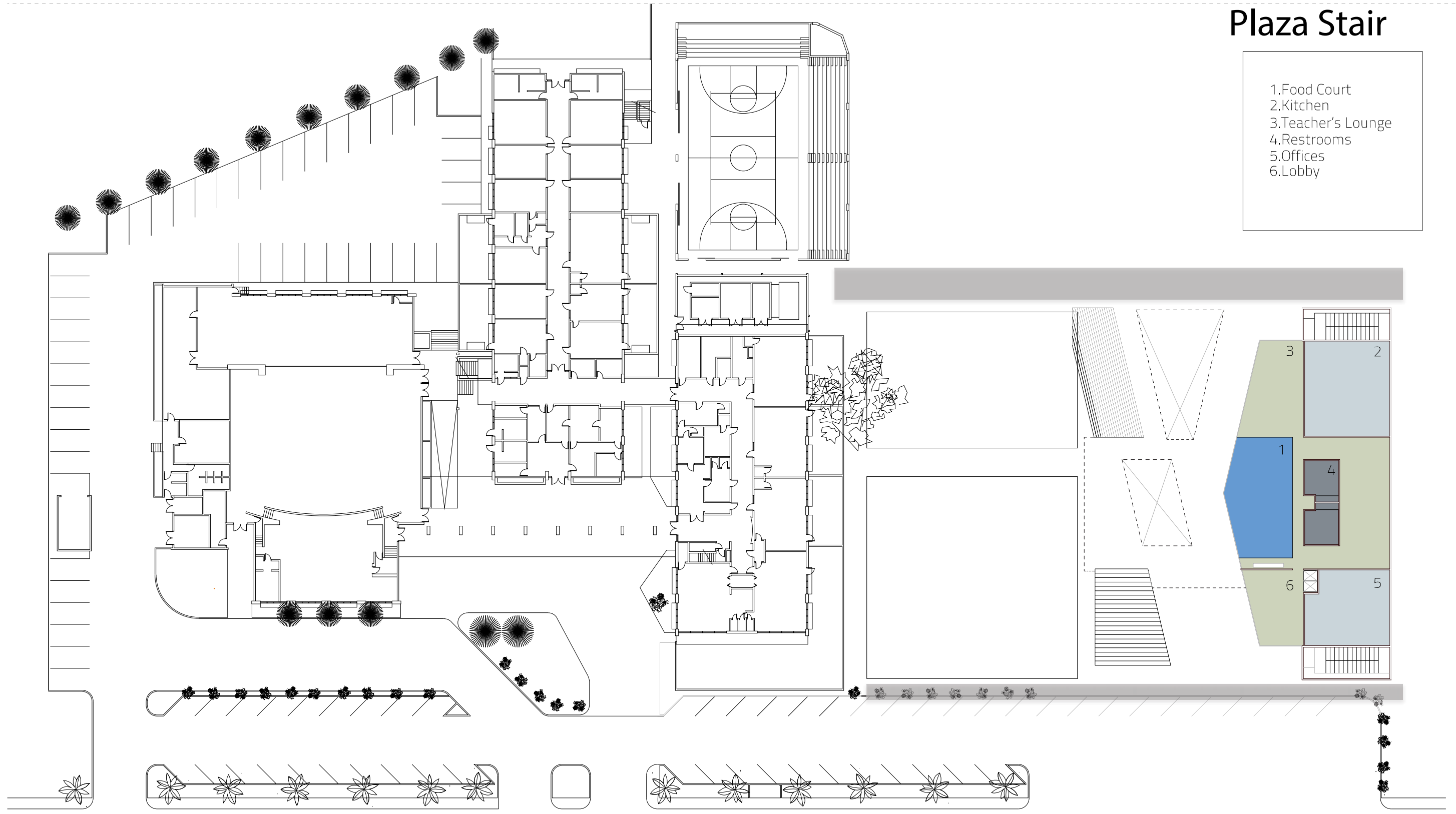
Plaza Stair

[Design Strategies Photos]

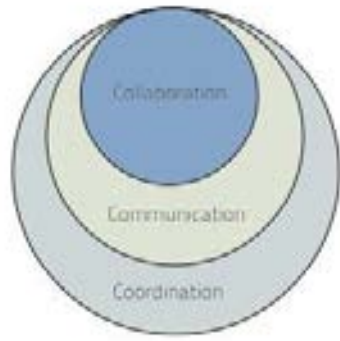


Plaza Stair

- 1. Food Court
- 2. Kitchen
- 3. Teacher's Lounge
- 4. Restrooms
- 5. Offices
- 6. Lobby



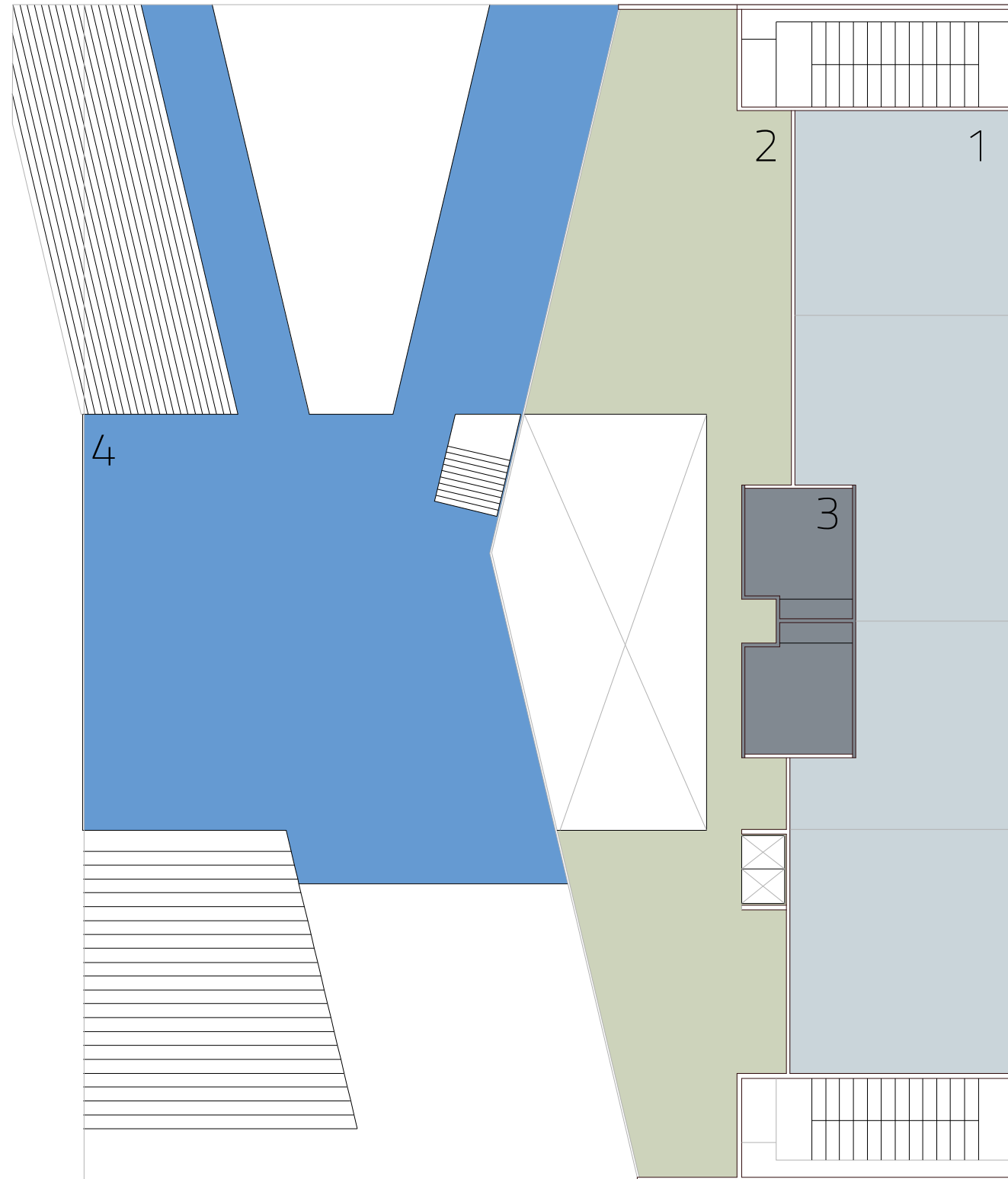
Range of Interactions



Plaza Stair
Plaza Stair

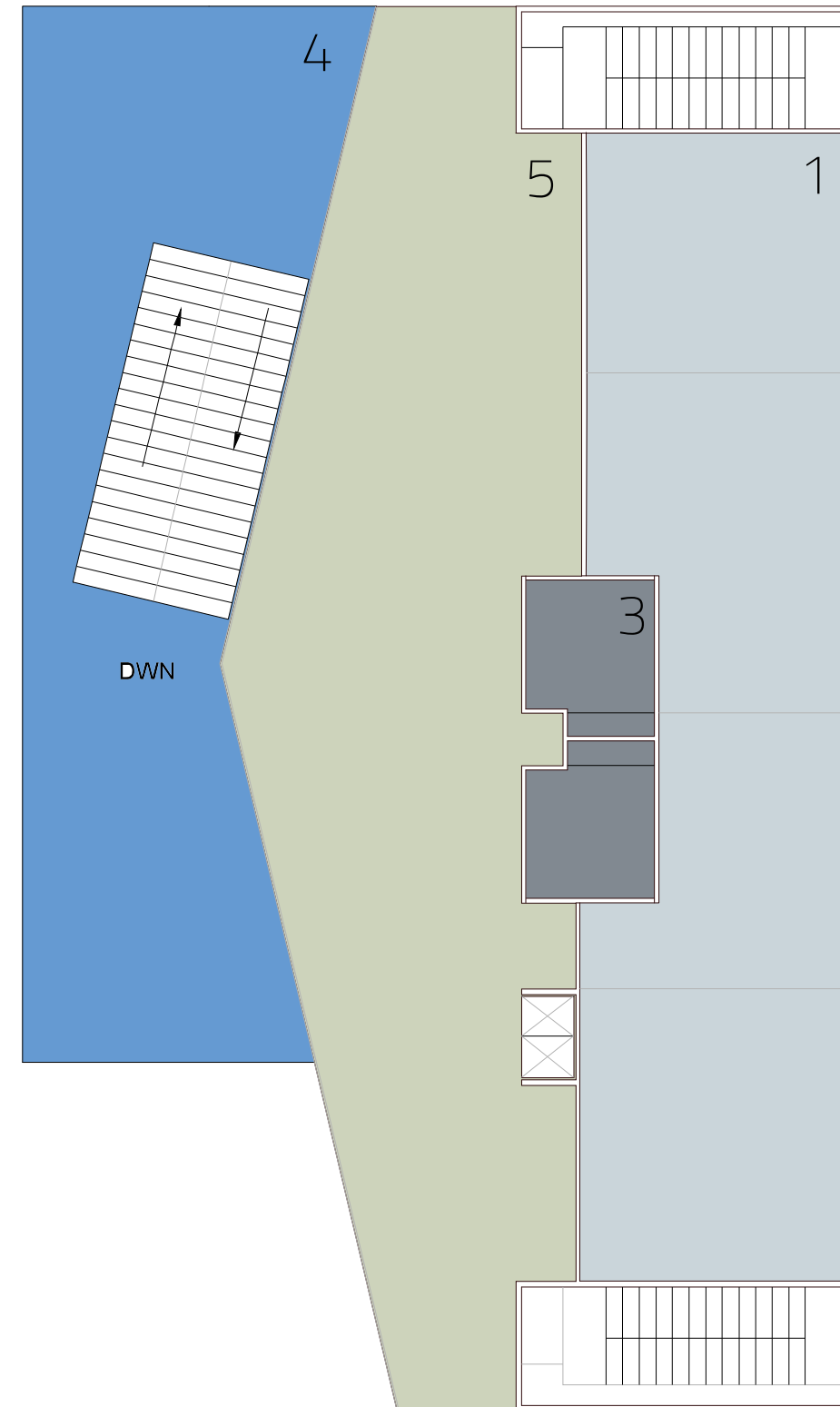
- 1.Studios
- 2.Lounges
- 3.Restrooms
- 4.Exterior Lounge

2nd Floor



unge

OC

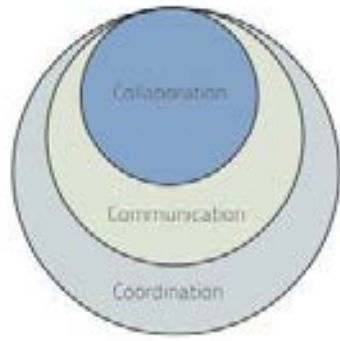


- 1.Studios
- 2.Lounges
- 3.Restrooms
- 4.Exterior Lounge
- 5.Library/Media

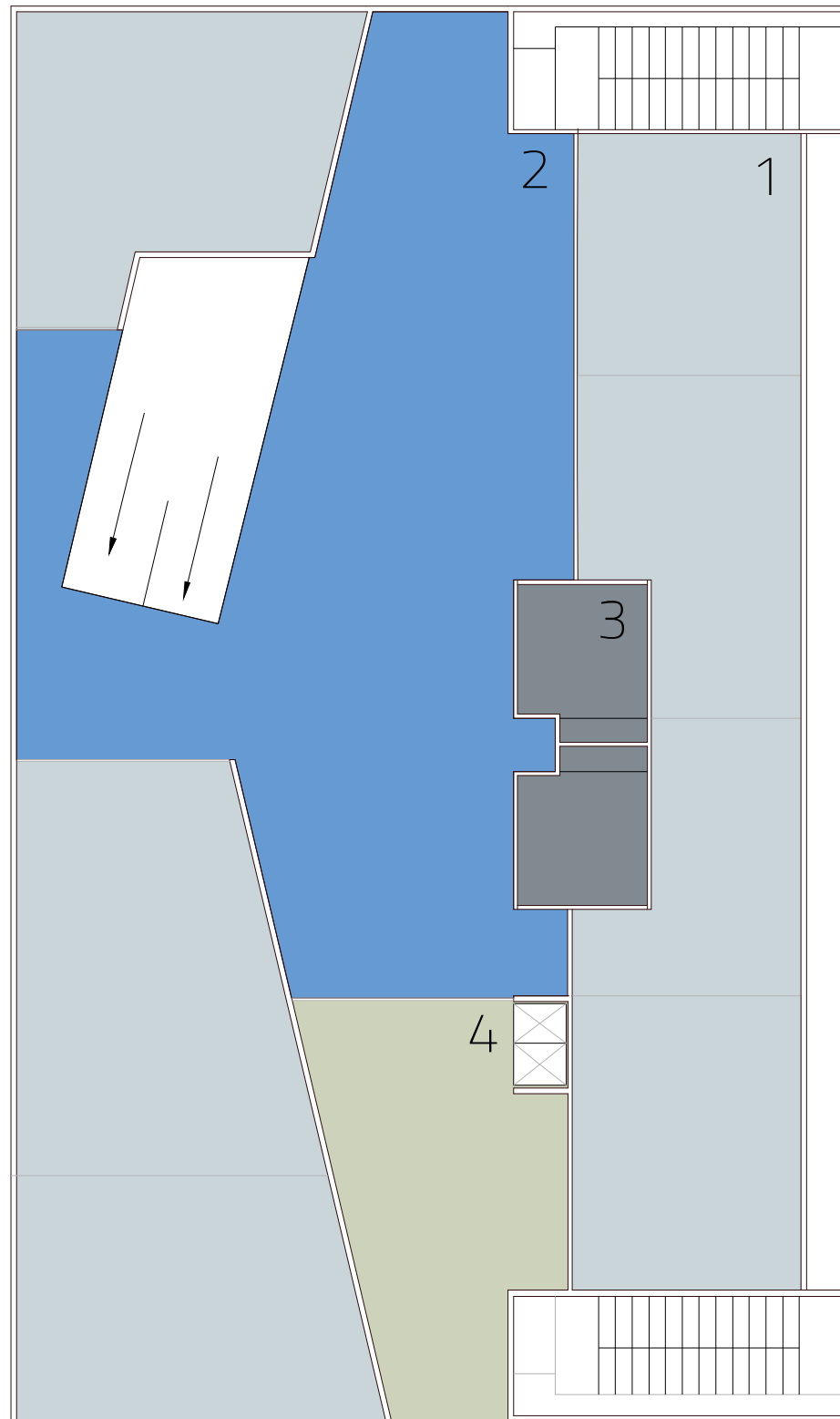
- 1.Studios
- 2.Lounges
- 3.Restrooms
- 4.Exterior Lounge
- 5.Library/Media

3rd Floor

Range of Interactions

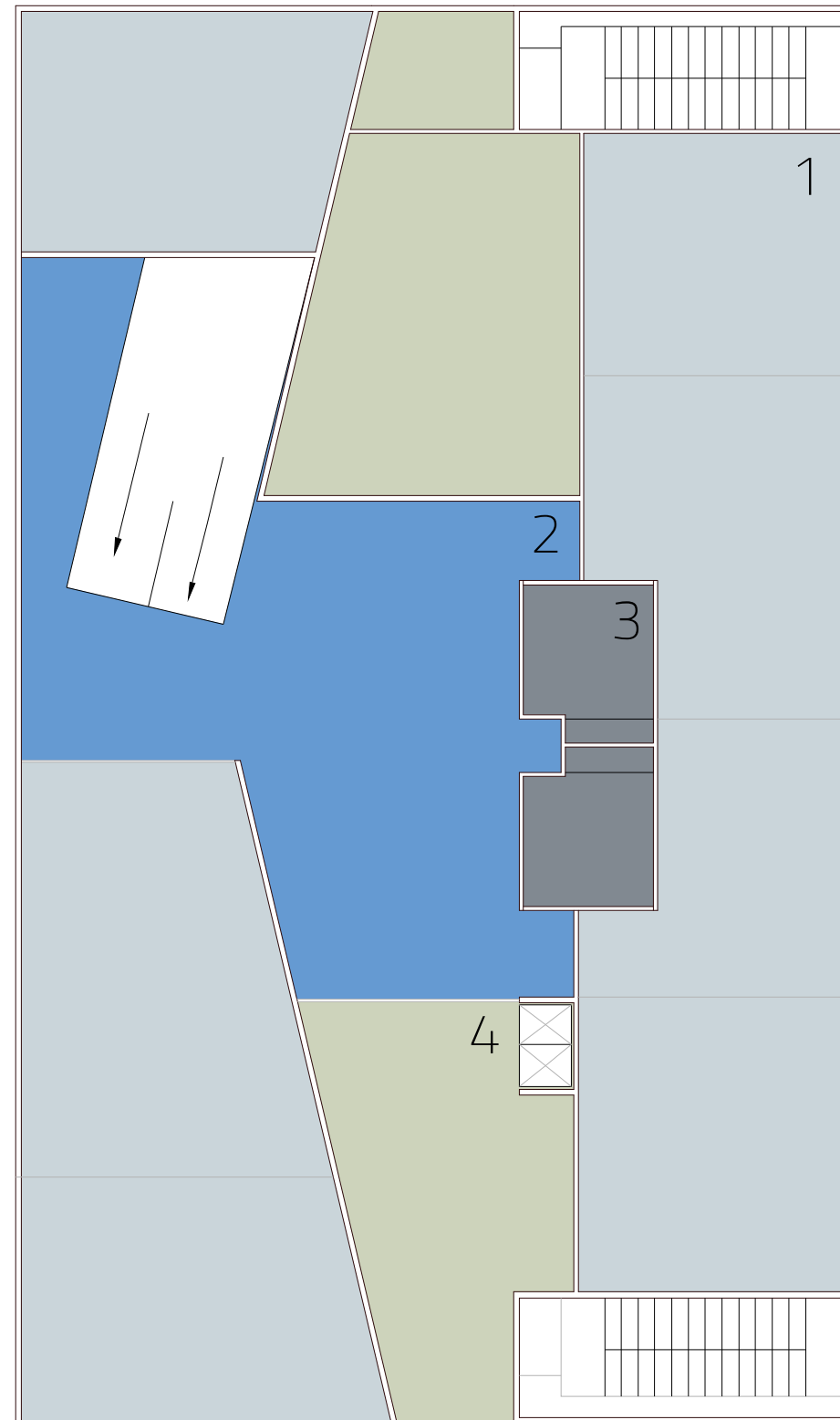


Plaza Stair
Plaza Stair



- 1.Studios
- 2.Exterior Lounge
- 3.Restrooms
- 4.Lounge

4th Floor



- 1.Studios
- 2.Lounges
- 3.Restrooms
- 4.Exterior Lounge
- 5.Library/Media

- 1.Studios
- 2.Exterior Lounge
- 3.Restrooms
- 4.Lounge

5th Floor

- 1.Studios
- 2.Lounges
- 3.Restrooms
- 4.Exterior Lour

2nd Flc

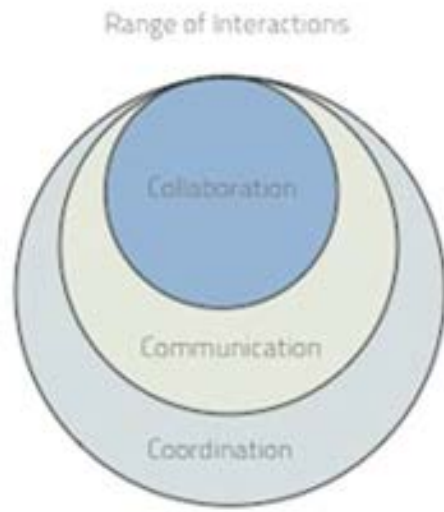




Rabbi Alexander S. Gross
HEBREW ACADEMY SCHOOL

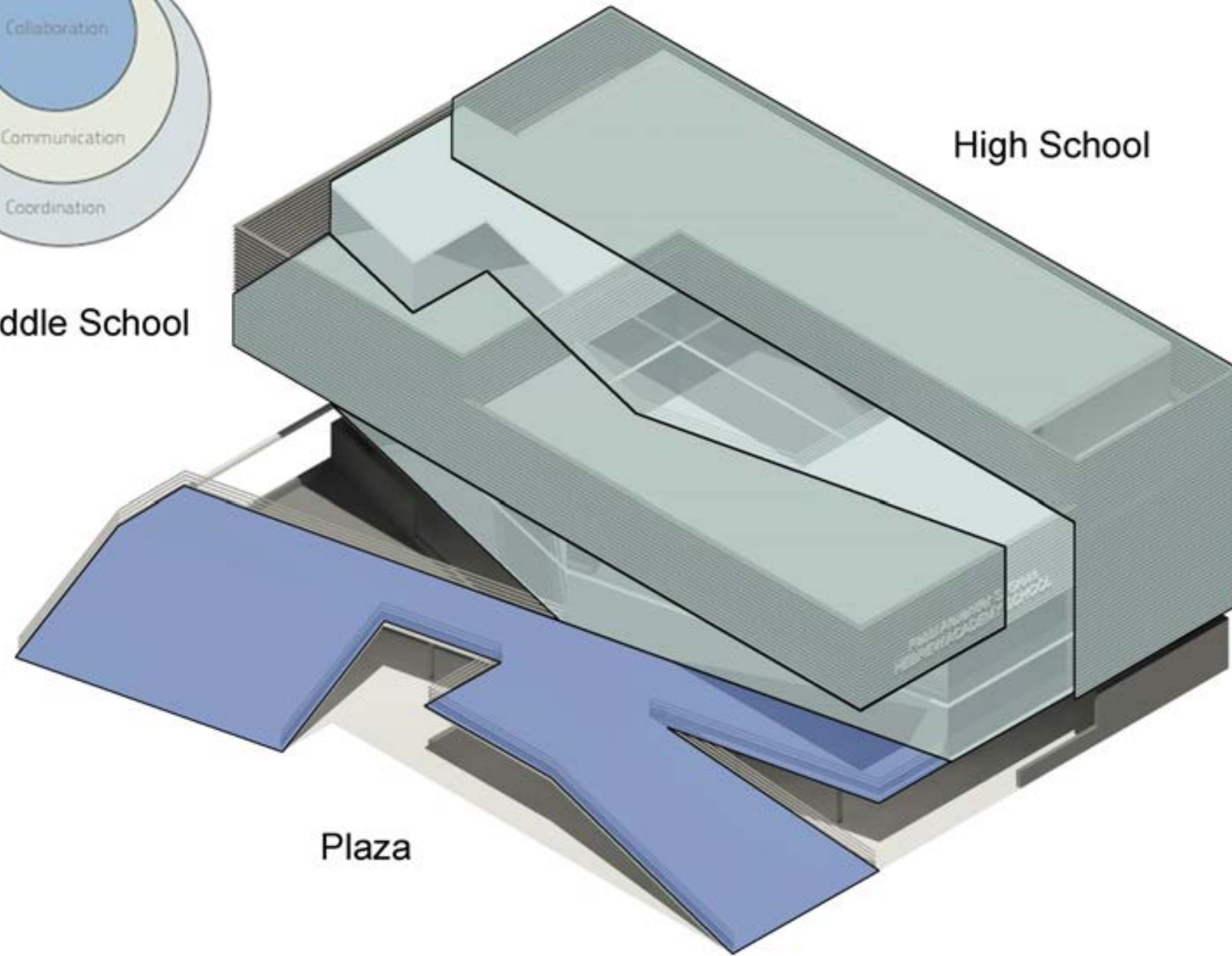




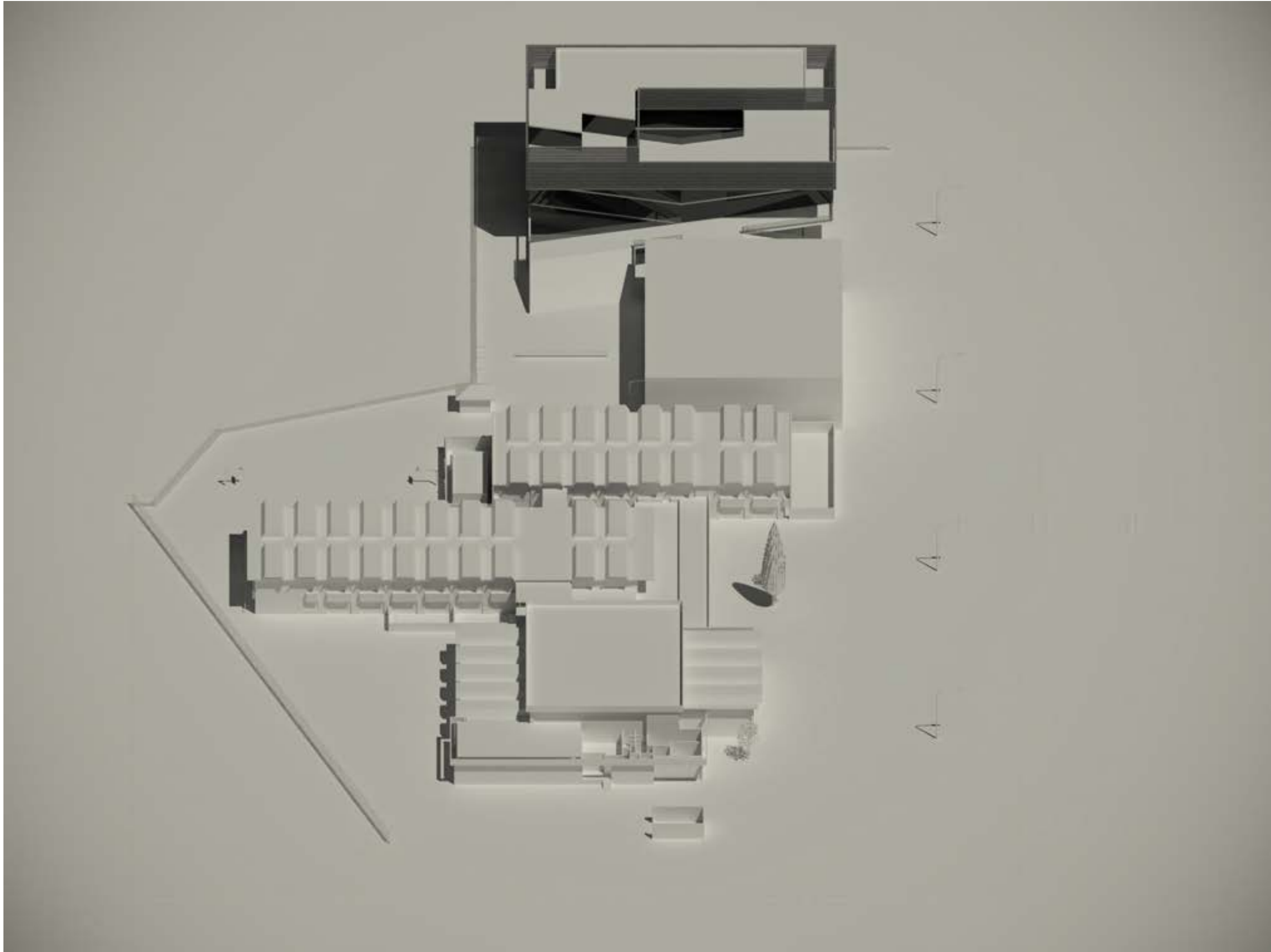


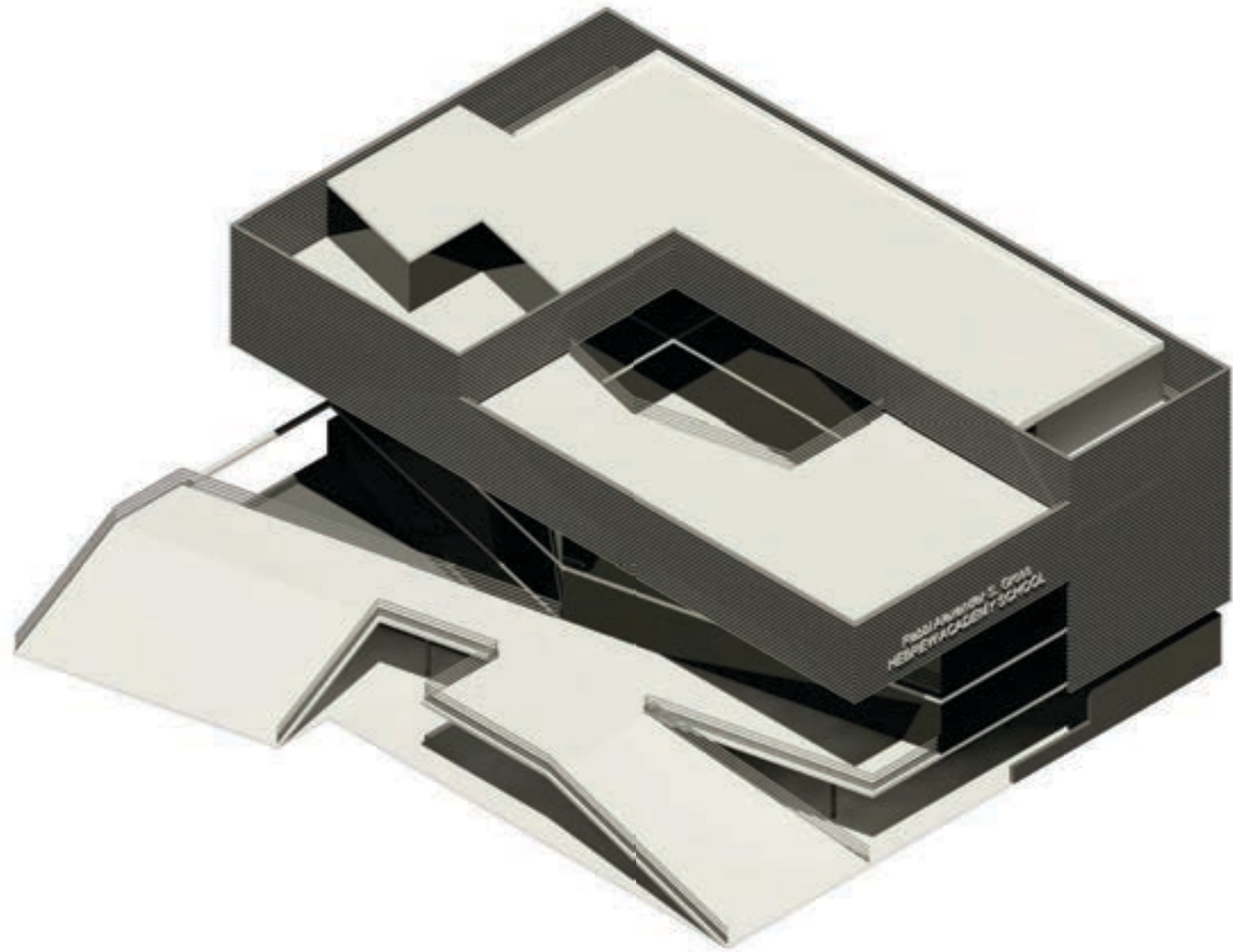
Middle School

High School



Plaza





RAISED TERRACES



Precedents

Skin - Facade

Voids

Perforations

Openness





Precedents

Interiors
Lightness
Openness
Sense Community



IDEAS

**Raised of the ground
LIGHT**

Flexible Classrooms

Flexible space for Media + Technology + Performance + Group Meetings

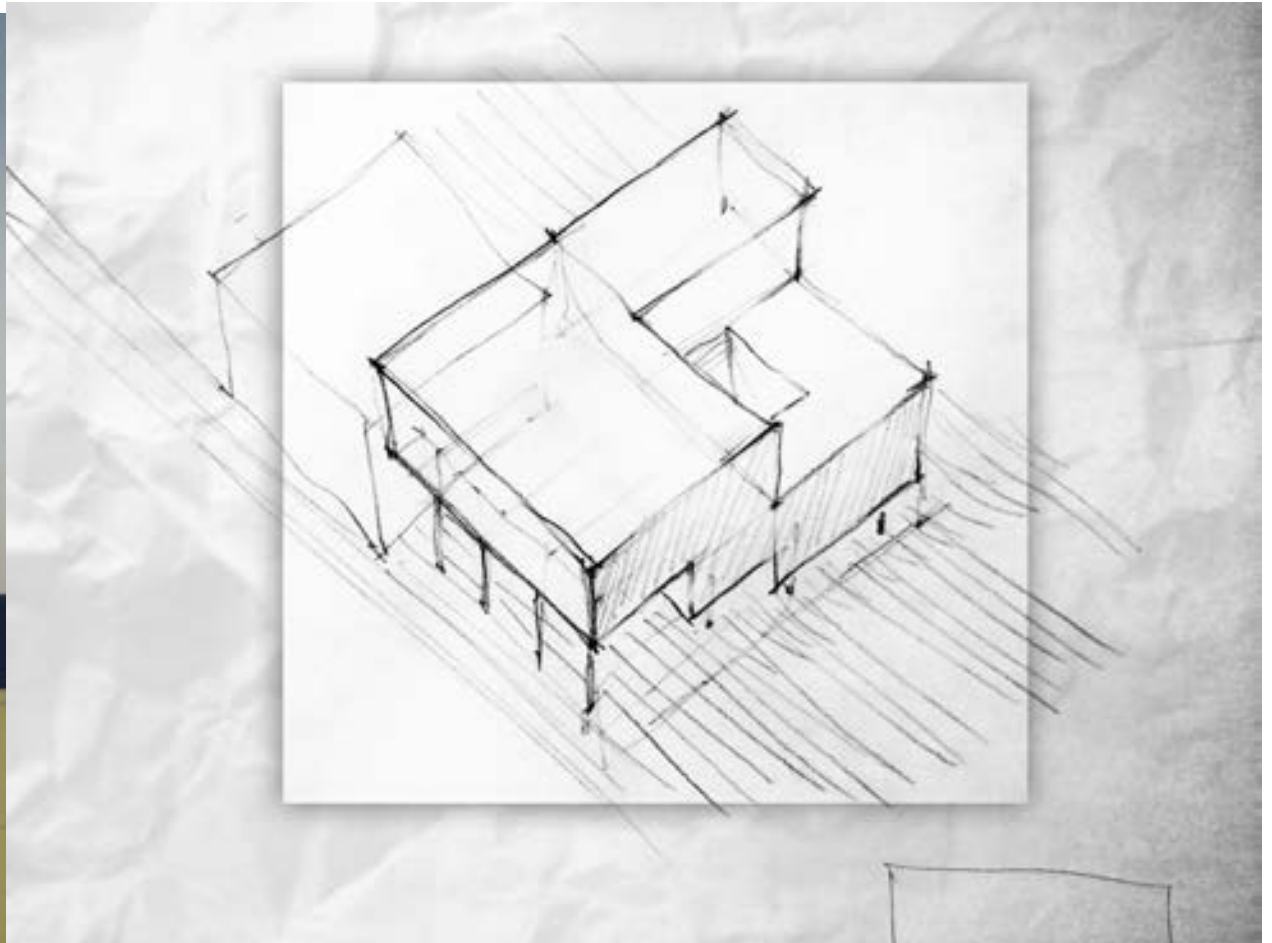
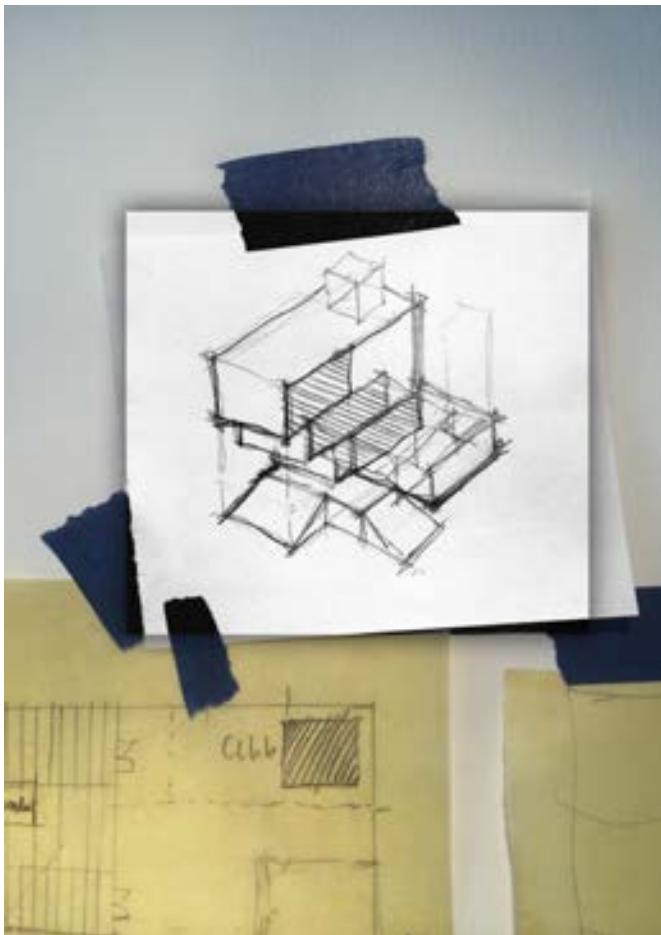
Outdoor spaces for all Studios/Labs

Traditional + Modern Spaces

24 parking spaces

Pockets of space for students to Plug into + Hang out + SEATING

PROGRESS

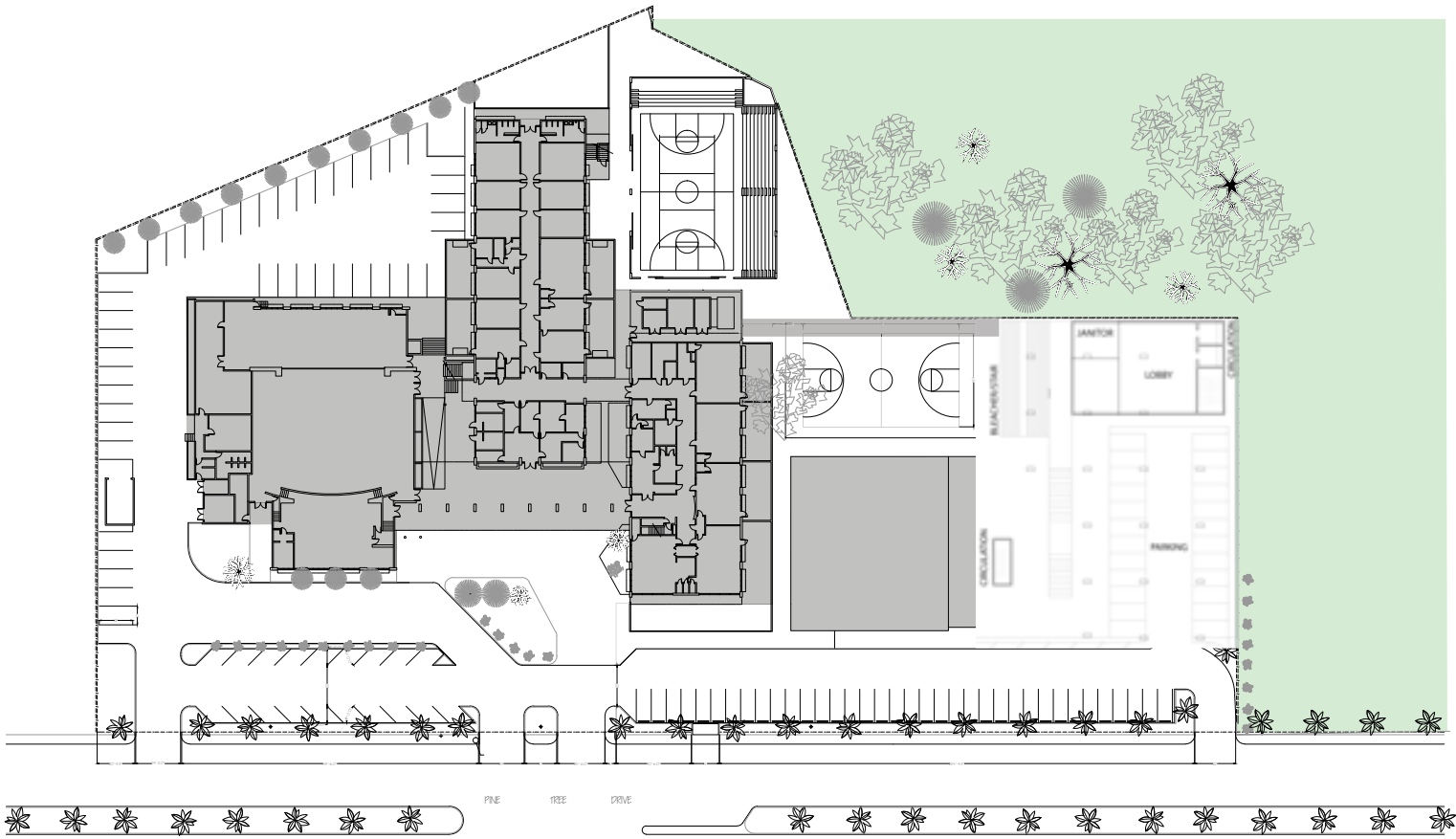


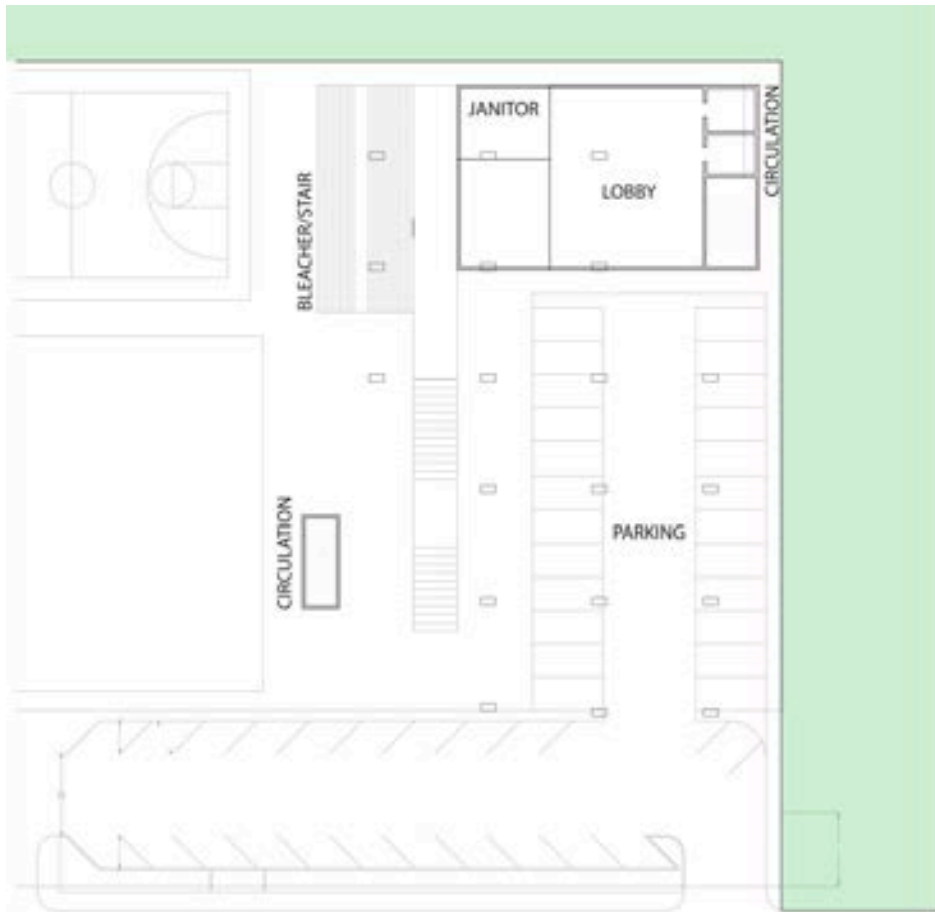


EAST ELEVATION]

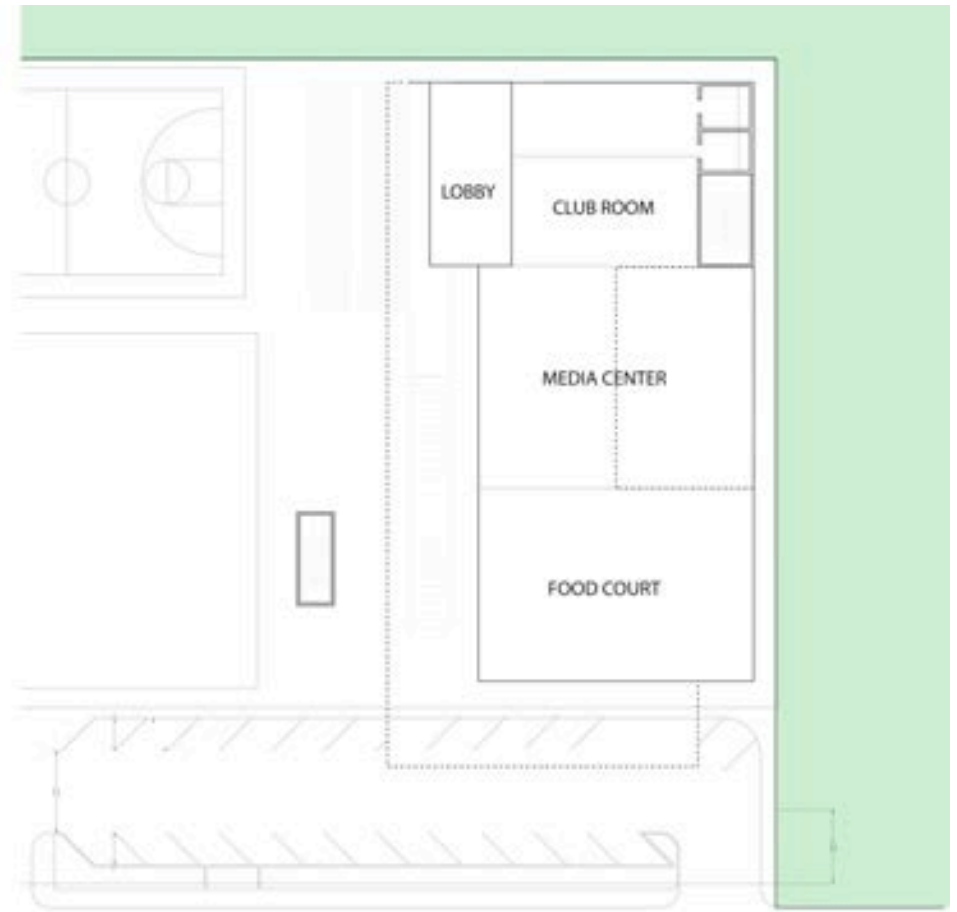
PROPOSAL



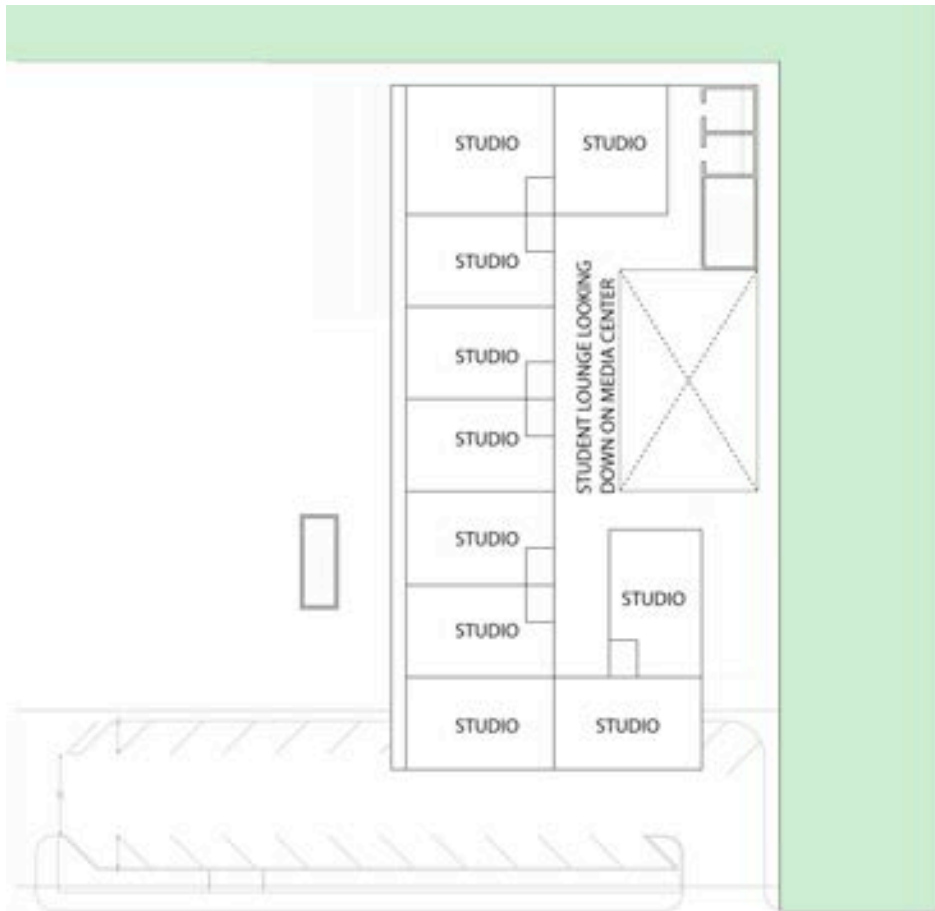




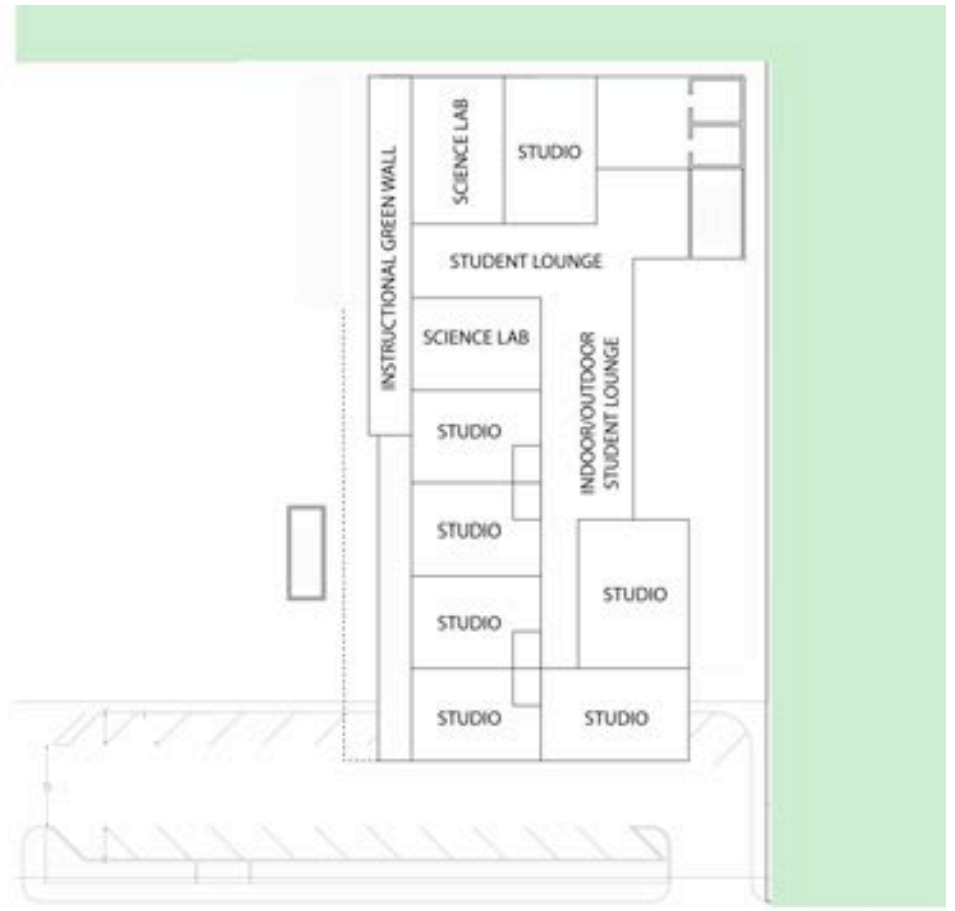
GROUND FLOOR



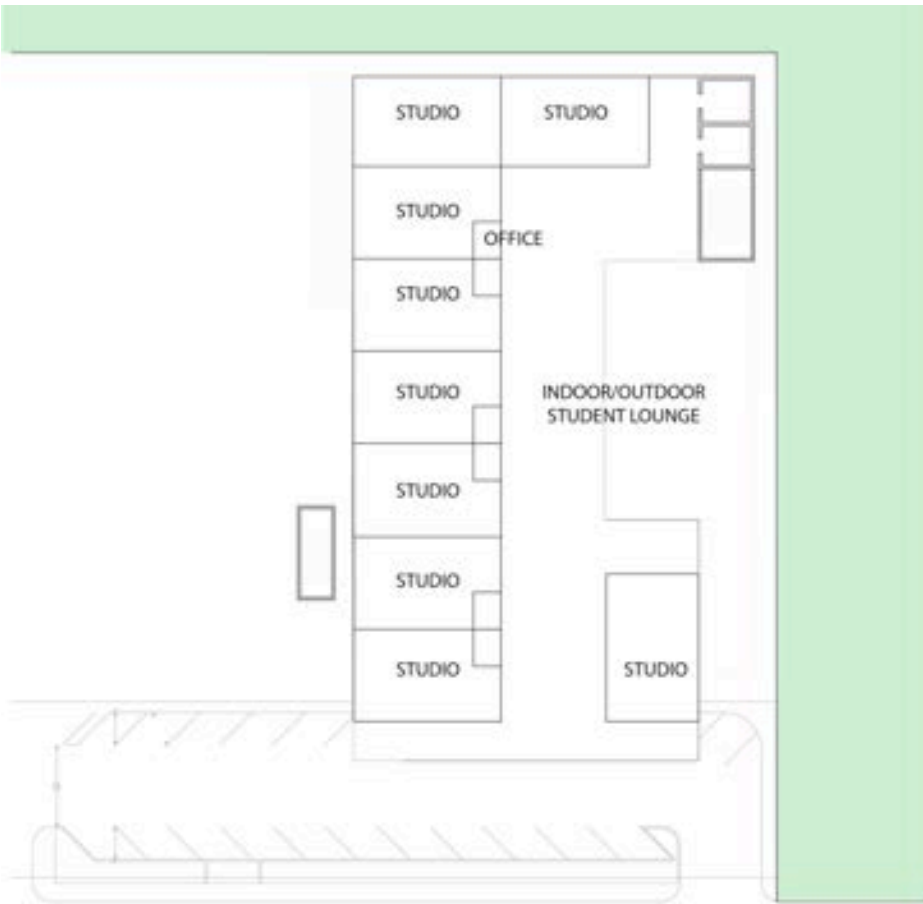
2nd FLOOR



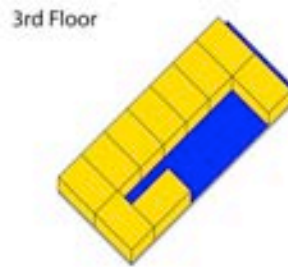
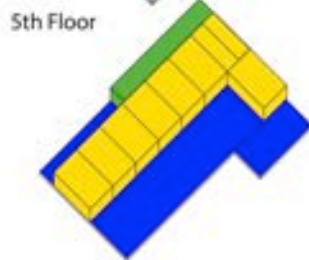
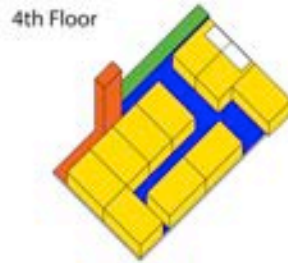
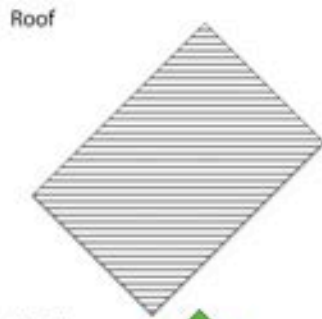
3rd FLOOR



4th FLOOR



5th FLOOR



- Lobby
- Circulation
- Media Center
- Classrooms
- Food Court
- Green Wall
- Lounge Space

