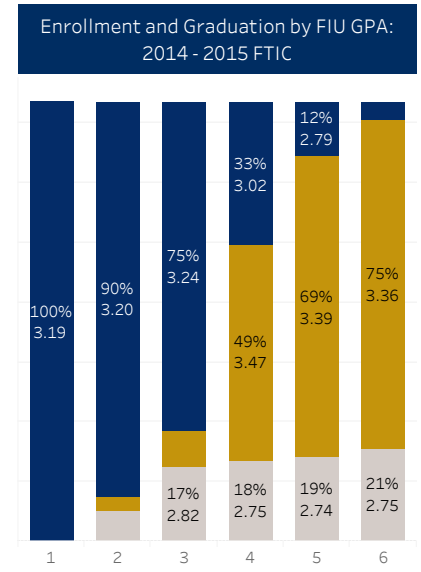
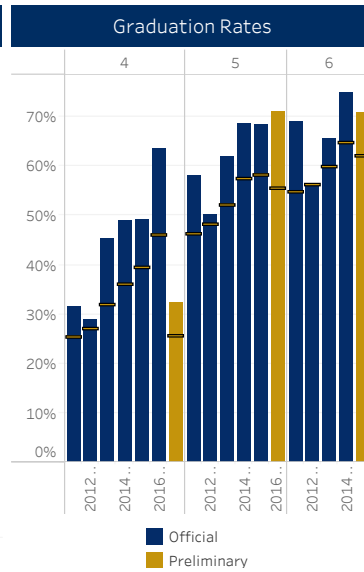
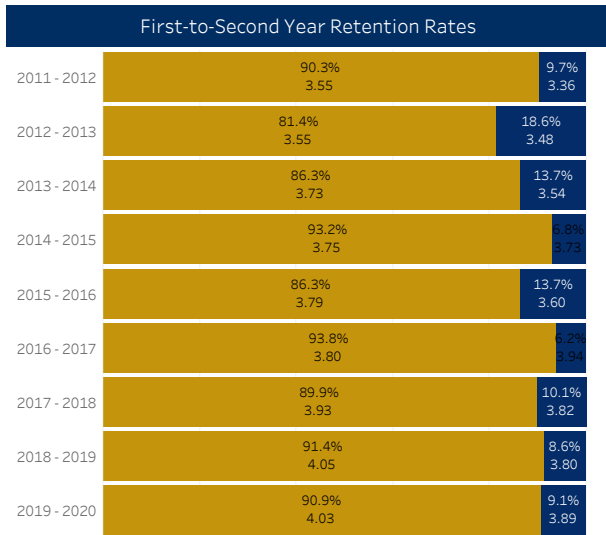


# Retention, Academic Progress, and Graduation

<b>Cohort Type</b> FTIC	<b>Cohort Year</b> 2014 - 2015	<b>First/Last Academic Str..</b> First Term Academic Structure	<b>College</b> College of Communicat..	<b>Department</b> Multiple values	<b>Major</b> All	<b>Academic Plan</b> All	<b>Subplan</b> All
<b>Enrollment Status</b> FULLTIME	<b>Housing Status</b> All	<b>Gender</b> All	<b>Ethnicity</b> All	<b>Residency Status</b> All	<b>Online Status</b> All	<b>First Generation Status</b> All	
<b>Honor Indicator First</b> All	<b>Honor Indicator Last</b> All	<b>International Status</b> All	<b>Pell Status</b> All	<b>Strategic Emphasis Status</b> All			



Note: Average High School GPA included.

## Retention and Graduation by Year

Cohort Year	Cohort Count	Year																	
		Re-Enrolled	Graduation Rate	Retention Rate	Re-Enrolled	Graduation Rate	Retention Rate	Re-Enrolled	Graduation Rate	Retention Rate	Re-Enrolled	Graduation Rate	Retention Rate	Re-Enrolled	Graduation Rate	Retention Rate	Re-Enrolled	Graduation Rate	Retention Rate
2011 - 2012	227	100%	0%	100%	90%	0%	90%	75%	3%	78%	44%	32%	76%	18%	58%	76%	6%	69%	75%
2012 - 2013	204	100%	0%	100%	81%	0%	81%	67%	3%	70%	37%	29%	66%	12%	50%	62%	5%	56%	61%
2013 - 2014	190	100%	0%	100%	85%	2%	86%	69%	7%	77%	29%	45%	75%	9%	62%	72%	3%	66%	68%
2014 - 2015	147	100%	0%	100%	90%	3%	93%	75%	8%	83%	33%	49%	82%	12%	69%	81%	4%	75%	79%
2015 - 2016	161	100%	0%	100%	84%	2%	86%	70%	7%	77%	27%	49%	76%	6%	68%	75%	3%	71%	74%
2016 - 2017	145	100%	0%	100%	92%	2%	94%	68%	16%	84%	20%	63%	83%	10%	71%	81%			
2017 - 2018	99	100%	0%	100%	88%	2%	90%	64%	17%	81%	43%	32%	76%						
2018 - 2019	128	100%	0%	100%	87%	5%	91%	77%	7%	84%									
2019 - 2020	110	100%	0%	100%	91%	0%	91%												

Explore by .. First-Generation Status

Official Rate Preliminary Rate

### Graduation Rate by First-Generation Status: 2014 - 2015

	Year													
	1		2		3		4		5		6		7	
	Coho	Graduat..	Coho	Graduat..	Coho	Graduat..	Coho	Graduat..	Coho	Graduat..	Coho	Graduat..	Coho	Graduat..
First-Gener..	22	0.0%	22	4.5%	22	###	22	###	22	###	22	###	22	###
Non-First Generation	125	0.0%	125	3.2%	125	7.2%	125	###	125	###	125	###	125	###

### First-Generation Status (I): 2014 - 2015

