

A thin vertical black line runs down the left side of the page.

**FIU SCHOOL OF
ARCHITECTURE**

STUDENT HANDBOOK

TABLE OF CONTENTS

ABOUT THE FIU SCHOOL OF ARCHITECTURE	5
GENERAL INFORMATION.....	6
CONTACT INFORMATION	6
FACILITIES AND SATELLITE LOCATIONS	7
FACILITY AND LAB RULES.....	10
DESIGN STUDIO CULTURE	10
MATERIAL AND EQUIPMENT FEE	12
SCHOLARSHIPS.....	12
ACADEMIC ADVISING	12
MINIMUM GRADE FOR COURSES REQUIRED FOR THE MAJOR	12
ADVANCED STANDING	13
INCOMPLETE GRADES	13
INTERNAL DISMISSAL	13
NON-DEGREE SEEKING STUDENTS	13
TRANSFER STUDENTS.....	14
GRADUATION.....	14
ACADEMIC GRIEVANCES	14
COURSE REGISTRATION.....	15
TRANSITIONING OF UNDERGRADUATE STUDENTS.....	15
COURSE PREFIXES.....	15
COURSE ROTATIONS.....	15

DESIGN REVIEW JURIES	15
STUDY ABROAD AND DOMESTIC STUDY TRAVEL.....	16
ABSENT/TARDINESS POLICY.....	16
SCHOOL OF ARCHITECTURE STUDENT ORGANIZATIONS.....	17
SCHOOL OF ARCHITECTURE DEGREE PROGRAMS	19
A. UNIVERSITY CORE CURRICULUM.....	19
GRADUATE DEGREES	19
A. ACCELERATED MASTER OF ARCHITECTURE	19
B. ACCELERATED MASTER OF INTERIOR ARCHITECTURE	20
C. ACCELERATED MASTER OF LANDSCAPE ARCHITECTURE.....	20
D. MASTER OF ARCHITECTURE.....	20
E. MASTER OF INTERIOR ARCHITECTURE.....	21
F. MASTER OF LANDSCAPE ARCHITECTURE	21
POST-PROFESSIONAL (NON-ACCREDITED) DEGREES + CERTIFICATES.....	21
A. MASTER OF ARTS IN INTERIOR ARCHITECTURE.....	21
B. DOCTOR OF DESIGN.....	22
GRADUATE CERTIFICATES	22
A. CRUISE SHIP AND SUPER YACHT DESIGN	22
PROFESSIONAL LICENSURE REQUIREMENTS.....	23

FIU School of Architecture Student Handbook

Founded in 1997 as the first public school of architecture in Miami, Florida, the [FIU School of Architecture \(SoA\)](#) was built on the guiding vision of **providing access to excellence**. Today, the School is housed in the iconic **Paul L. Cejas School of Architecture Building**; graduates more Hispanic design students than any other architecture school in the nation; and consistently ranks in the Top 25 among public schools of architecture in the United States.

The FIU SoA is composed of three closely aligned departments: **Architecture, Interior Architecture, and Landscape Architecture + Environmental and Urban Design**. Jointly headed by the Chairs of the three departments with support from the Associate Dean for Architecture and the Dean of the College of Communication, Architecture + The Arts, the School of Architecture provides a rich and diverse platform for interdisciplinary activities at the curricular and research levels. The award-winning **Paul L. Cejas School of Architecture Building** was inaugurated on April 11, 2003.

Beginning undergraduate students in all the SoA departments are taught together in a single design stream –Interior Architecture students for the first year, and Architecture and Landscape Architecture for the first two years of their curricula. They then come back together as advanced students for integrated design charrettes and studios. Under the aegis of the School of Architecture, faculty in the three design disciplines apply for grants together, collaborate on the writing of books, and undertake design research through studios and external charrettes involving graduate students.

The FIU School of Architecture is among the few architecture schools in the United States where undergraduate students begin their graduate programs in their first semester. **The FIU School of Architecture confers only graduate degrees.**

Architecture

The FIU [Department of Architecture](#) trains students in the profession of architecture to become thoughtful practitioners, critical thinkers, and broad visionaries with the skills and knowledge to enhance their communities and the built environment around them.

Interior Architecture

The FIU [Department of Interior Architecture](#) advances the interior design profession through teaching, service, scholarship, and creative activities focused on the generation and application of knowledge. These activities concentrate on interior architectural practices that promote the

Landscape Architecture + Environmental and Urban Design

The FIU [Department of Landscape Architecture + Environmental and Urban Design](#) prepares students for research and practice while focusing on the analysis, planning, design, and management of the natural and built environment of tropical and subtropical landscapes, alongside a comprehensive landscape architecture education that includes other geographical regions. It aims to educate individuals who can serve and lead the community in the enhancement of the quality of life through the aesthetic, meaningful, and sustainable design of the physical environment.

General Information

FIU is Miami's public research university. For more than 50 years, FIU has positioned itself as one of South Florida's anchor institutions by solving some of the greatest challenges of our time. We are dedicated to enriching the lives of the local and global community. With a student body of more than 54,000, we are among the largest universities in the nation and have collectively graduated more than 330,000 alumni, 165,000 of whom live and work in South Florida. There are eleven Schools and Colleges in the University; the [School of Architecture \(SoA\)](#) is one of four schools and two departments housed in the [College of Communication, Architecture, + The Arts \(CARTA\)](#).

The information in this handbook is provided to inform students of the policies and procedures set by the School of Architecture faculty and administration. **While the School of Architecture Handbook endeavors to be up-to-date, it never supersedes the requirements and regulations laid out in the [FIU Student Handbook](#) and/or the [University Catalogue](#).**

Contact Information

Name and Title	Email and Telephone	Office
Brian Schriener Dean	305-348-3176 Schriener@fiu.edu	PCA 285
Marilys Nepomechie Associate Dean for Architecture	305-348-1887 Nepomech@fiu.edu	PCA 275A
Henry Rueda Coronel Chair, Dept. of Architecture	305-348-0322 Hruedaco@fiu.edu	PCA 279B
Nicholas Nedev Interim Chair, Dept. of Interior Architecture	305-348-3181 Nnedev@fiu.edu	PCA 279A
Ebru Ozer Chair, Dept. of Landscape Architecture + Environmental and Urban Design	305-348-7560 Eozero@fiu.edu	PCA 275B
Cory Fairfield Assoc. Director, Academic Advising	305-348-2219 Cfairfie@fiu.edu	PCA 283B
Ruth Montero Academic Advisor	305-348-7500 Rmontero@fiu.edu	PCA 273B
Leo Lozano Academic Advisor	305-348-7500 Llozano@fiu.edu	PCA 273A
Maria Garcia Office Manager	305-348-1323 Garciamd@fiu.edu	PCA 280
Zinaida Hirlemann Sr. Program Coordinator	305-348-6914 Zhirlema@fiu.edu	PCA 277B
Mayra Ortega College Recruiter	305-348-4884 Maortega@fiu.edu	PCA 385A
Clotilde Picart Laguer Career Specialist	305-348-2423 Cpicartl@fiu.edu	PCA 276A

SoA Facilities and Satellite Locations

Paul L. Cejas School of Architecture Building

The Paul L. Cejas School of Architecture Building (PCA) is the main learning center for students in architecture, interior architecture, and landscape architecture + environmental and urban design. It is named after Paul L. Cejas, the former U.S. Ambassador to Belgium and longtime supporter of the College of Communication, Architecture + The Arts (CARTA). Paul L. Cejas, as a member of the State of Florida Board of Regents, championed the creation of the school and made a significant philanthropic gift to FIU in support of the School of Architecture. Since then, Ambassador Cejas has continued to support the School of Architecture through **[the Miami Beach Urban Studios \(MBUS\)](#)**.

Located at the Modesto Maidique Campus (MMC), the state-of-the-art facility was designed by renowned architect [Bernard Tschumi](#) specifically to meet the needs of the School of Architecture. It houses pre-graduate and graduate studios, critique rooms, a 150-seat lecture hall, lecture/seminar classrooms, a reading room, an atelier, an interior design resource library, a robotics lab, a digital print lab and a digital fabrication lab, a dedicated gallery, and faculty and staff offices.

This unique venue is a combination of five buildings of different heights interconnected with walkways and bridges that together offer 102,000 square feet of state-of-the-art classroom, studio, gallery, workshop and office space. The building opens to a central courtyard that the architect hoped would foster interaction among students and faculty.

Some of the elements that make this venue unique are:

- The pre-graduate and graduate studios
- Multiple critique rooms
- The use of ceramic tile in tones of yellows, oranges and reds
- The use of pre-cast concrete tilt-up panel construction
- The multi-level technologically advanced central studio space
- A 150-seat auditorium with a state-of-the-art audiovisual system
- The research facilities and digital fabrication labs
- An exhibition gallery for students to display their work

Architecture, Interior Architecture, and Landscape Architecture + Environmental and Urban Design students share the large open studio spaces. Students have access to the studios and study spaces during the entire semester. The students also have access to storage cabinets and electrical and Internet access. Students in the Pre-graduate Studios (Design 1-4) are assigned to individually dedicated desks. Students in the Graduate and Advanced Studios work in shared spaces that mimic the layout of contemporary design office practices.

The studios are supported by adjacent critique rooms. Studio instructors typically have access to these spaces for pin-ups and seminar meetings. These rooms are equipped with flat screen TVs for video and digital presentations. They are a valuable resource and support studio class discussions, lectures, and final and mid-term reviews.

SoA Miami Beach Urban Studios (MBUS)

The **[SoA Miami Beach Urban Studios \(MBUS\)](#)** offers our students an exceptional opportunity to study in one of the most vibrant and artistic urban centers in the world, while gaining valuable

professional experience at design firms, and by working with innovative public, private, and non-profit arts organizations throughout the city.

The Miami Beach Urban Studios is a remarkable facility located at the corner of Lincoln Road and Washington Avenue in the heart of Miami's famous South Beach. The facility houses maker spaces, galleries, offices, studios and classrooms. Serving as a gateway to the dynamic urban environment of South Beach, the facility affords our architecture, interior architecture, and landscape architecture + environmental and urban design students the opportunity to explore design in context that houses a variety of very interesting design examples and situations. MBUS offers gallery and exhibition spaces, classroom and studio spaces, parking (complimentary for MBUS students) and faculty offices.

Situated just two blocks from Frank Gehry's New World Symphony and a short walk from The Wolfsonian Museum-FIU, the Bass Museum, and other cultural arts venues, MBUS offers students a truly immersive experience in arts and culture. Additionally, students can enjoy Miami Beach's tropical landscapes, parks, beaches, and award-winning outdoor spaces with just a short stroll. The SoA also makes MBUS available for university and community events and workshops.

More information: <https://mbus.fiu.edu>

SoA MBUS Studio Assignment and Commuting Expectations

As part of the School of Architecture program structure, as well as our academic and professional missions, each semester several studios are assigned to MBUS. Here, students engage in digital fabrication, generative AI, historic preservation, and environmental resilience—challenges and opportunities with particular relevance to the barrier island of Miami Beach. Students may apply to take part in these studios or may be randomly assigned. All students assigned to MBUS are responsible for their own transportation and commute. Lack of personal transportation or other commute-related concerns are not considered valid reasons to decline or be excused from an MBUS studio assignment. There are no exceptions.

SoA Robotics + Digital Fabrication (RDF) Lab

The [Robotics and Digital Fabrication Laboratory \(RDF\)](#) is a state-of-the-art facility with robotic arms, 3D scanners, laser cutters, programmable objects, and 3D printers. The lab offers unique technology solutions for design, testing, prototyping, and fabrication. RDF is an extension of FIU's Integrated Computer Augmented Virtual Environment (I-CAVE), which is a fully immersive and interactive facility. These facilities are designed to support diverse and innovative ways of using high-end visualization equipment for digital fabrication as well as advancing fabrication technologies and tools through visualization. Either as part of specialized coursework or through participation in faculty research projects, students in the SoA professional (Masters) programs benefit from engagement in the RDF Lab.

More information: <https://carta.fiu.edu/roboticslab/>.

SoA Fabrication (FAB) Lab

The [FIU SoA Fabrication Lab](#) offers students and faculty in the Departments of Architecture, Interior Architecture, and Landscape Architecture + Environmental and Urban Design the opportunity and the facility to experiment and explore design ideas at multiple scales. We believe that designs developed in the studio and knowledge acquired in the classroom can be more fully

synthesized when students engage directly with materials and hands-on activities. Our design pedagogy actively promotes a culture of making through physical modeling, material testing, full-scale mock-ups, advanced fabrication techniques, prototyping, and installations.

The Fabrication Lab features a diverse range of equipment from simple traditional tools to cutting-edge computer-controlled milling machines. We consider our lab space a flexible space that is continuously reorganized and modified to fit our evolving educational and research agendas. Our staff of highly trained student lab technicians is available to monitor safety and to provide assistance and training.

More information: <https://carta.fiu.edu/academics/school-of-architecture/facilities/>

SoA Digital Lab

The [FIU SoA Digital Lab](#) offers students and faculty in the Departments of Architecture, Interior Architecture, and Landscape Architecture + Environmental and Urban Design the capacity to explore various modes of computer-aided reproduction and representation in both two and three dimensions.

The Digital Lab features a range of two-dimensional printers from simple sheet-feed LaserJets to wide-format roll-feed Canon plotters. Laser cutters offer an opportunity to quickly produce surface studies or two-dimensional parts for models and assemblies. Additionally, MakerBot replicators provide ample opportunity for rapid prototyping and formal exploration.

More information: <https://carta.fiu.edu/academics/school-of-architecture/facilities/>

SoA Studios + Critique Rooms

Architecture, interior architecture, and landscape architecture + environmental and urban design students share the large open studio spaces. Students have access to the studios and study spaces during the entire semester. The students also have access to storage cabinets and electrical and Internet access. Students in the Pre-graduate Studios (Design 1-4) are assigned to individually dedicated desks. Students in the Graduate and Advanced Studios work in shared spaces that mimic the layout of contemporary design office practices.

The studios are supported by adjacent critique rooms. Each studio instructor has access to these spaces for pin-ups and seminar meetings. These rooms are equipped with flat screen TVs for video and digital presentations. They are a valuable resource and support studio class discussions, lectures, and final and mid-term reviews.

SoA Structural + Environmental Technologies (SET) Lab

The School of Architecture [Structural and Environmental Technologies Lab \(SET Lab\)](#) is an interdisciplinary facility dedicated to teaching and research in building science and technology with a focus on ecology and the importance of climate responsive and energy-conscious design and construction. The SET Lab provides a dedicated space and equipment for learning through research, testing, and investigation of materials and systems for resource-efficient built environments. The space also supports other components of the SoA curriculum, including History/Theory Labs and design studios.

More information: <https://carta.fiu.edu/academics/school-of-architecture/facilities/>

SoA Facility and Lab Rules

To ensure a productive, safe, and respectful learning environment, all students are expected to adhere to the following facility and lab rules at all School of Architecture locations, including but not limited to the Paul L. Cejas School of Architecture Building, MBUS, the Fabrication Lab, Digital Lab, RDF Lab, and SET Lab:

- **Access:** Students must follow established access protocols for all labs and studios, which include using their Panther ID cards to unlock closed doors and not altering locking mechanisms and propping doors open. Those who are not students at FIU are prohibited from accessing any SoA Labs and Studios unless granted prior permission for events or exhibitions.
- **Cleanliness and Care:** All students are responsible for maintaining clean, orderly, and damage-free workspaces. Projects and materials must be cleared or properly stored when not in use. Improperly stored materials or projects and items left over at the end of the semester will be discarded.
- **Safety Protocols:** Safety rules must be followed at all times, especially in fabrication and digital labs. Appropriate attire (e.g., closed-toe shoes), use of PPE, and adherence to posted signage and staff instructions are mandatory.
- **Equipment Use:** Use of lab equipment is permitted only after proper training or under staff supervision. Misuse or damage of equipment may result in loss of access privileges and disciplinary action.
- **Respect for Shared Spaces:** Studios, critique rooms, and labs are collaborative environments. Respect for peers, faculty, staff, and property is always expected. Noise should be kept to a minimum to support focused work.
- **MBUS Commuting Responsibility:** Students assigned to MBUS studios must attend regularly and are responsible for their own transportation. Failure to attend due to commuting issues will not be excused.
- **24/7 Studio Access:** Studio access is available to SoA students 24/7. At all times, students must abide by all university security, safety, and code of conduct regulations while using SoA facilities -- including after-hours, weekend hours, and holidays.

Failure to comply with these rules may result in restricted access to facilities, removal of privileges, or referral to the Office of Student Conduct and Conflict Resolution.

School of Architecture Learning + Studio Culture

The School of Architecture recognizes the inherent value of the design studio learning model. Studio learning encourages dialogue, collaboration, risk-taking, innovation, and learning-by-doing. The studios and labs offer an environment where students can come together to ask questions and create proposals. These proposals are developed and discussed among classmates, faculty, visiting professionals, and the public-at-large. Studio and lab-based learning offer intensive one-on-one instruction from faculty members and visiting guests and provide the opportunity for each student to develop their critical thinking skills and spatial and material sensibilities. The design studio and labs offer a synthetic form of education, where project-based learning becomes the foundation for developing an understanding of and commitment to the School's core values — broad mindedness, inter-connectivity, professionalism, exploration and

activism — all in service of the School of Architecture’s fundamental mission: To improve the quality of the built and natural environments.

- **Open-ended questions** – The School of Architecture encourages students to embrace studio-based learning as a unique and valuable educational model. Studio learning requires an environment that allows for open-ended questioning, for which there may be no right answers.
- **Balance** – The School of Architecture supports its students and faculty in leading balanced lives.
- **Time-management** – Students are encouraged to work smarter, not necessarily longer, in the studio.
- **Design process** – The School of Architecture affirms the value of design intention, design process, and design product, thus encouraging and evaluating (1) the student’s understanding of the ideas that motivate and the forces that inform the project at hand (“grasp”), (2) the student’s assiduousness in the development of ideas and use of information in the process of design (“process” or “effort”), and (3) the material and graphic quality of the studio’s final products — be they models, drawings, or representations in other media — as well as the appropriateness of the proposed design in its real-world context (“product”).
- **Grades** – Grades are but one measure of a student’s performance in studio. Advising and counseling are considered integral to the learning culture.
- **Collaboration** – In addition to individual design projects, FIU’s School of Architecture values partner and group projects at every level of design research and development.
- **Interdisciplinary opportunities** – To become effective designers of, and advocates for, an excellent built environment, the School of Architecture supports interdisciplinary work among the three design disciplines that constitute the School and encourages community-based research and engagement through which students can acquire a broad range of skills and experiences.
- **Faculty development** – Faculty who teach studio courses are selected for their ability to inspire students to learn, engage students in critical thinking, bring forward their expertise, and convey a sense of optimism about the fields of architecture, interior architecture, and landscape architecture + environmental and urban design.
- **Critiques/Reviews** – Public presentation and display of the work of the design studio is valued and is essential in developing skills for effective verbal communication. The School of Architecture supports considered and respectful dialogue—whether spirited debate or reflective discussion — during public presentations.
- **Pluralism** — The School of Architecture supports active, and open dialogue. The studio is a place where diverse life experiences and opinions are shared. A culture of respect and open inquiry supports the life-long learning process that begins in school.
- **Maintenance of the Studio Culture + Policy** – To ensure the effectiveness and implementation of the Studio Culture Policy—as well as to create the opportunity to amend or change policies outlined therein, the School of Architecture’s Studio and Learning Culture Policy will undergo review every two years by representatives of the faculty and student body. The policy will also be reviewed periodically in an open forum that invites the participation of all students and faculty members.
- **Social Space** – The Paul L. Cejas School of Architecture Building is an asset for student socialization and for events. Its courtyards, lawns, terraces, staircases and walkways are valued spaces that enhance the culture of learning.

- **Travel** – The School of Architecture values travel both domestically and abroad. Immersion in other environments, cities, and cultures provides our students with critical experiences. Firsthand interaction with completed projects, and those under construction, enriches learning throughout the curriculum.
- **Respect** – The School of Architecture respects diversity and the dignity of the individual.

Material and Equipment Fees

Some courses within the School of Architecture will have required material and/or equipment fees. These fees are paid to Florida International University and are defined as follows:

Material and Supply Fees are defined by [Florida Board of Governors Regulation 7.003\(10\)](#) as "materials or supply items which are consumed in the course of the student's instructional activities, excluding the cost of equipment replacement, repairs, and maintenance."

Equipment Use Fees are defined by [Florida Board of Governors Regulation 7.003 \(18\)\(e\)](#) as "fees and fines relating to the use, late return, and loss and damage of facilities and equipment."

Equipment is considered specialized, integral, and required for the instruction of the course. Equipment will be used directly by the students. Fees have also been approved to support safety and the safe use of equipment by faculty and students.

Scholarships

In addition to scholarships and financial aid offered by the university, the College of Communication, Architecture + The Arts and the School of Architecture reward academic merit and reduce financial need for pre-graduate and graduate, incoming and current students through additional scholarships. These scholarships are made possible by the generous donations of FIU alumni, organizations, and other benefactors who want to help students complete their education.

Find updated information regarding College (CARTA) scholarships and scholarships specific to each of the School of Architecture departments by using the links below:

- [CARTA](#)
- [Architecture](#)
- [Interior Architecture](#)
- [Landscape Architecture](#)

FIU also maintains a database of general scholarships posted on <https://fiu.academicworks.com/>.

Academic Advising

From Orientation to Graduation, the School of Architecture has academic advisors committed to your success. For your convenience, both in-person and remote advising sessions are offered. Information on Academic Advising and scheduling an appointment can be found on our webpage here: <https://carta.fiu.edu/academics/school-of-architecture/advising/>

Minimum Grade for Courses Required for the Major

No grade below a 'C' will be accepted for graduation in required courses or professional electives.

Advanced Standing for Prior Coursework

In some cases, prior coursework may be deemed academically relevant but non-transferable due to differences in course content, credit hours, instructional methods, or institutional accreditation. In such cases, advanced standing may allow students to enroll in higher-level courses or replace courses, but no credit hours will be awarded toward degree completion.

All requests for advanced standing are subject to review by the appropriate academic department and must be supported by official transcripts, course descriptions, and, when necessary, syllabi. Courses must have been completed at a regionally accredited institution, and students must have earned a grade of B or higher (or equivalent) to be considered for credit.

Students are encouraged to consult with an academic advisor to determine the applicability of prior coursework and to initiate the advanced standing review process as early as possible.

Incomplete (IN) Grades

An incomplete grade (IN) is a temporary symbol given at the discretion of the instructor for work not completed due to serious interruption, not caused by the student's own negligence.

Students receiving an incomplete grade (IN) in studio courses, must complete the missing work prior to the beginning of the next studio in their curricular sequence. Students should be aware that the time frame is only a few days between Spring and Summer semesters and a few weeks between Summer and Fall or Fall and Spring semesters.

Students receiving an incomplete grade (IN) in non-studio courses must complete the appropriate coursework within two semesters (including summer). If coursework is not completed in this time frame, the incomplete grade (IN) will automatically default to a failing grade (F). Students should not re-enroll in the same course to make up the incomplete grade. To change an incomplete grade, the student should speak directly to the course instructor to have the appropriate documentation submitted.

If a student receives an incomplete (IN) grade and has applied for graduation at the end of the term, he or she must complete the incomplete grade prior to the conferral of the degree. The Graduation Office begins to confer degrees on the day grades are released and continues within the timeframe given to them by the State of Florida. If the student does not complete the IN grade within the established timeframe, the student's graduation will be denied, and he or she will need to apply for graduation the following term.

Internal Dismissal

All students are required to meet the minimum academic standards and policies stated in the published university catalog which can be found here: <https://catalog.fiu.edu/programs>. Students who fail to meet these academic standards and policies are subject to an internal academic review, which may result in dismissal from the program, requiring students to change their major.

Non-degree Seeking Students

Non-degree students, except Architecture students completing an EESA-NCARB evaluation, are generally precluded from enrolling into School of Architecture courses unless given prior approval by the respective Department Chair.

Transfer Students

Applicants who possess an AA degree in an Architectural discipline, may also apply for the Master of Architecture, Master of Interior Architecture, and Master of Landscape Architecture degree programs. These students apply for the accelerated master's programs and, if accepted, will transfer in at the third year, where they begin their graduate level coursework. This course of study usually takes three to four years to complete, depending on the track that is selected.

Transfer applicants must have completed all foundation courses before their first Fall semester to be admitted into the FIU School of Architecture. Design pre-requisite courses for each program can be found here:

- [Architecture](#)
- [Landscape Architecture](#)
- [Interior Architecture](#)

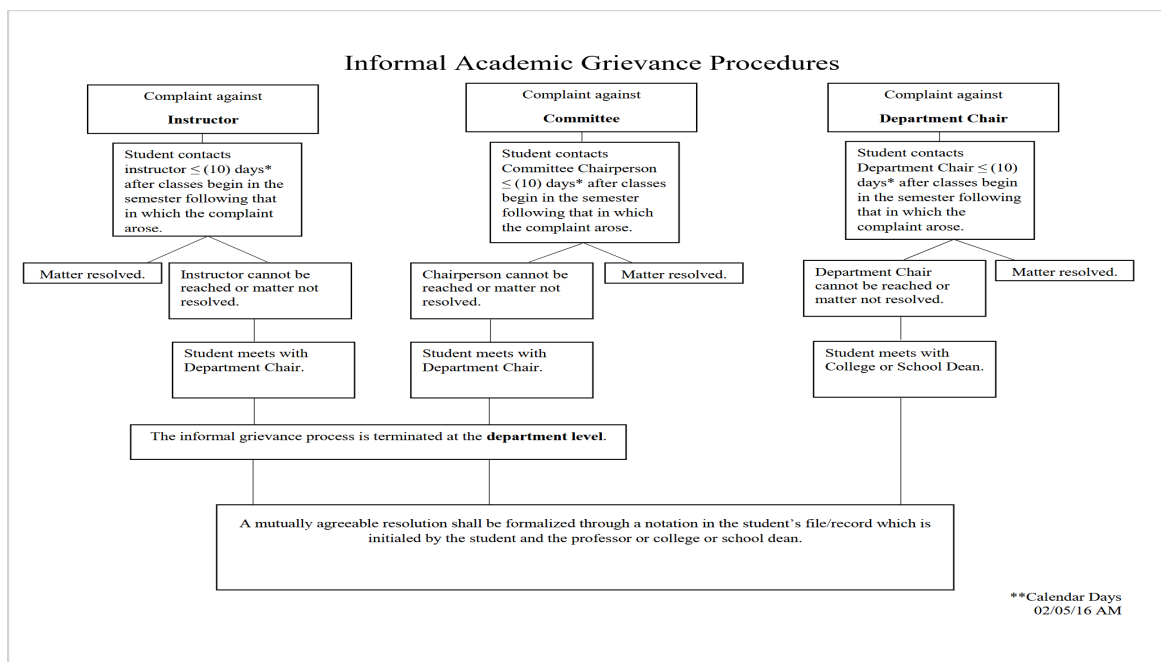
Graduation

Your Academic Advisor will be able to tell you when you are ready to graduate. **Students should meet with an advisor to review the course work necessary for the completion of a degree at least once per semester.** All students must apply for graduation in their my.fiu.edu portal after enrolling in their final semester.

Applying for graduation and registering for commencement are two different steps. While all students graduate, choosing to attend commencement is optional and has a separate registration process. More information on this process can be found at commencement.fiu.edu.

Academic Grievances

The School of Architecture follows FIU's centralized Academic Grievance workflow which can be found here: <https://dasa.fiu.edu/all-departments/academic-grievances/>.



Course Registration

With the exception of students in the Doctor of Design (DDes) program, all students enrolled in the School of Architecture will be registered for their ARC, IND, and LAA courses by an academic advisor. Students are not permitted to select specific instructors or course sections.

Due to the structure of the curriculum, most courses are offered in a single section per term, and students typically progress through the program as a cohort. When feasible, academic advisors make every effort to diversify students' instructional experiences by minimizing repeated enrollment with the same faculty member. This approach is intended to expose students to a broad range of teaching perspectives and to emphasize the importance of course content and learning outcomes over instructor preference. **Registration requires that students do not have holds on their accounts preventing the advisor from registering them.**

Transitioning from Pre-Graduate to Graduate Status

Students in our Accelerated Masters Programs will be evaluated for matriculation to graduate status based upon their graduate GPA at the end of the spring semester of their 4th year (provided they have earned a minimum of 120 total credits). The criteria listed below must be satisfied:

- **5-Year (Accelerated) Path and Transfer students** must have completed either Graduate Design 4 (INTA or LAA) or Graduate Design 9 (ARC).
- **6-Year Path Architecture students** must have completed ARC5343.
- A minimum of **120 earned credits** (counting no more than 60 lower-division transfer credits)
- **3.0 or higher GPA in graduate level coursework** (5000 level or higher), and
- **Completion of undergraduate coursework.**

If a student does not meet the criteria above to transition to graduate status, the student will be subject to Departmental review for continuation in the program.

Course Prefixes

Coursework in the School of Architecture is distinguished by our course prefixes.

- **ARC – Architecture**
- **IND – Interior Architecture**
- **LAA – Landscape Architecture + Environmental and Urban Design**

Transfer students may enter with Design/Architectural coursework under a different prefix.

Course Rotations

Most courses in the School of Architecture are offered once per term and only once per year, since program students are enrolled as a cohort and take courses in a specified lock-step order. Dropping or failing a required course will, in most cases, result in students graduating one year late.

Design Review Juries

Design review juries are a key component of the School of Architecture curriculum, culminating in academic events such as the annual "Super Juries" during which graduating students present

their final projects. These juries showcase design innovation and faculty mentorship, with guest jurors often participating. The School of Architecture also holds juries to identify scholarship and awards recipients and to adjudicate design competitions.

Study Abroad and Domestic Study Travel

The School of Architecture values academic travel both domestically and abroad. Immersion in the landscapes and built environments of other cities provides our students with critical experiences that enhance learning. Firsthand interaction with exemplary completed buildings, projects, and sites, as well as those under construction, enrich learning throughout the curriculum.

The School of Architecture offers three options for study travel:

- Residence abroad for a full semester through our Genoa, Italy, program
- International travel (typically 2 weeks) through one of the many Study Abroad programs offered each summer
- Domestic travel outside Miami as part of a design studio or lecture/seminar course.

While each SoA department may have additional eligibility requirements, all SoA students must hold a 3.0 or higher cumulative graduate GPA to participate in Study Abroad programs. **Capacity in Study Abroad programs is limited. As a result, in the case of high demand, students will be selected by academic excellence as demonstrated by GPA.**

Beyond the SoA, FIU offers multiple exchange agreements with foreign institutions through the FIU Office of Education Abroad. Through this university channel, students can also apply for a semester-long experience abroad.

More information: <https://studyabroad.fiu.edu>

SoA Absence/Tardiness Policy

The School of Architecture abides by university class attendance policies and regulations as detailed in the [Florida International University Catalog](#), **including the requirement that students attend first two weeks of all classes for which they are registered or risk being dropped from those classes.** The University Catalog notes that students remain accountable for all aspects of their enrollments and maintain responsibility for verifying all course drops and associated fees.

In accordance with university policy, only registered students appearing on an official class roster may attend a class at the University. During the first week of class, instructors must inform students of any special requirements and articulate any penalties, including a failing grade that may result for non-attendance. School of Architecture course syllabi typically note that four (4) unexcused absences automatically result in a failing grade. Each unexcused absence results in a 20% reduction from the attendance and participation grade for the course. Arriving late to class counts as one half (50%) of an absence. In the School of Architecture, an unexcused absence for a Midterm and/or Final (Exam or Studio Review) will result in a failing grade for that assignment.

Excused absences: Per university policy, faculty must excuse students from classes due to their military obligations, jury duty, religious days, illness, disability accommodations as approved by the Disability Resource Center, serious family emergencies, and/or participation in official university activities. As appropriate, students must provide evidence of the above. Students who

desire to be excused from class to observe a religious holy day should notify all their instructors at the beginning of the semester in writing.

Faculty must provide students with a reasonable amount of time to complete coursework and/or assignments missed during an excused absence. However, students are responsible for all material covered in any missed class.

School of Architecture Student Organizations

Student organizations are an important part of FIU and the School of Architecture. They provide students with a variety of opportunities not always found as part of the classroom experience, while allowing members to develop interpersonal, organizational, and leadership skills in a creative and supportive environment.

Student organizations are part of the [Departments of Architecture](#), [Interior Architecture](#), and [Landscape Architecture + Environmental and Urban Design](#). Several student organizations invite participation from across the School of Architecture.

The following are the current SoA student organizations:

Student Organizations | All SoA Departments:

- **Nicon Chapter of Alpha Rho Chi (APX)**
APX is a coed, professional fraternity available to anyone in any field of the allied arts. Membership is acquired through the traditional fraternity template, rush, pledge, initiation. Alpha Rho Chi is a brotherhood. We work very closely together; recently we have emerged as a strong force in the School of Architecture.
More information: <http://www.alpharhochi.org>.
- **Sigma Xi Chapter of the Tau Sigma Delta Honor Society (TSD)**
The Tau Sigma Delta Honor Society was founded in 1913 at the University of Michigan to celebrate achievement in the design disciplines. At the FIU School of Architecture, invitation and induction to Tau Sigma Delta recognizes the academic accomplishments of students who are in the final two years of their professional studies, and whose academic records place them in the top 10% of their respective degree programs.
More information: <https://tausigmadelta.org>
- **National Organization of Minority Architecture Students (NOMAS)**
The National Organization of Minority Architecture Students at FIU provides students with another avenue that will allow various cultures within a specific career to unite. NOMAS gives students an opportunity to create relationships with both architecture/design students and with professionals throughout the nation. Members participate mostly in social gatherings, informational seminars, and competitions. The goal is to inspire students to continue pursuing their career goals while simultaneously allowing their culture to influence their work in an innovative way.
More information: www.noma.net.

Student Organizations | Department of Architecture

- **American Institute of Architecture Students (AIAS)**

The American Institute of Architecture Students is a grassroots student-led organization, nationally recognized, and dedicated to helping architecture students across the United States succeed in their academic studies and upcoming careers.

The mission of AIAS is to promote excellence in architecture education, training and practice for all students. Members are dedicated to helping all Architecture, Landscape and Interior Architecture students succeed during their time at FIU! By coordinating various social and academic events throughout the year, AIAS aims to:

- Provide students with the essential tools and resources to better their skills inside the classroom.
- Prepare students for the professional workplace outside of the classroom.
- Connect students with networking opportunities amongst the local, national, and international architecture community.

More information: aias.org

Student Organizations | Department of Interior Architecture

- **International Interior Design Association Students (IIDA)**

The mission of the International Interior Design Association (IIDA) Florida International University Campus Center is to provide an environment for the mutual development and exchange of knowledge within the University among Students, Educators, Administration and Design Professionals.

More information: <https://iida.org/memberships/student>

Student Organizations | Department of Landscape Architecture + Environmental and Urban Design

- **American Society of Landscape Architects, Student Chapter (ASLA)**

The mission of an American Society of Landscape Architects (ASLA) at FIU Student Chapter is to support and engage future landscape architects by providing opportunities for education, networking, and professional development within the landscape architecture community. The chapter aims to connect students with professionals and promote the National [ASLA mission](#) of leading, educating, and participating in the stewardship of our environments through advocacy, communication, and fellowship.

More information: <https://carta.fiu.edu/landscape/students/clubs-organizations/>

School of Architecture Degree Programs

Each of the SoA departments offers multiple tracks to a graduate, STEM-designated, accredited professional degree in its discipline. One is an accelerated track for those entering the SoA programs directly from high school. The other tracks are for students with prior post-secondary education, who may be granted advanced placement for their earlier studies.

SoA Accelerated Master's Programs

Accelerated Master's Programs are composed of two parts:

- **University Core Curriculum:** Required of all pre-graduate students and students completing an accelerated Master's Degree.
- **Major Specific Courses**

University Core Curriculum (UCC)

The UCC is required of freshmen admitted to FIU beginning Summer B 2025 and transfer students beginning Fall 2025. Students are required to complete a minimum of 36 credits from the UCC course list and satisfy the category requirements. The UCC: [student_university-core-curriculum_changes-effective-fall-2025_04.11.25-with-course-number-updates.pdf](#)

Graduate Degrees Only

The School of Architecture does not offer Bachelor's Degrees. The School offers three (3) Accelerated Degrees, four (4) Master's Degrees (one post-professional), and one (1) post-professional Doctorate of Design.

The SoA degree programs: <https://www.fiu.edu/academics/degrees-and-programs/index.html>

SoA Graduate Accredited Professional Degree Programs

Accelerated Master of Architecture

The accredited, accelerated Master of Architecture professional degree program provides a seamless course of study leading from undergraduate freshman year to the conferral of the professional Master of Architecture degree (M.Arch.). The Accelerated MArch. is comprised of 174 credit hours of integrated pre-graduate and graduate coursework. The degree consists of 72 credit hours of pre-graduate coursework which are taken over two years and are followed by 102 credit hours of graduate coursework which can be completed in either three or four years. Students in the accelerated M. Arch. program are awarded the professional Master's degree without first having to earn an undergraduate degree. As such, no Bachelor's degree is awarded. The M.Arch. prepares students for professional practice in architecture through six focus areas: architectural design; history/theory; building technologies; digital technologies; ethics and professional business practice; and general education. A laboratory for the study of architecture and urbanism in the context of rapid growth, Miami provides opportunities to explore environmental challenges, historic structures, and contemporary works by the world's leading practices. The program takes advantage of Miami's geographic location as one of the principal academic and economic gateways to the Global South and Europe. **The M.Arch. is a professional, STEM-designated degree, fully accredited by the National Architectural Accreditation Board (NAAB).**

Accelerated Master of Interior Architecture

The **accredited, accelerated Master of Interior Architecture professional degree program** provides a seamless course of study leading from undergraduate freshman year to the conferral of the professional Master of Interior Architecture degree (MIA). The Accelerated MIA is comprised of 156 credit hours of integrated pre-graduate and graduate coursework. The degree consists of 72 credit hours of pre-graduate coursework which is taken over two years and is followed by 84 credit hours of graduate coursework which can be completed in either three or four years. Students in the accelerated MIA program are awarded the professional Master's degree without first having to earn an undergraduate degree. As such, no Bachelor's degree is awarded. The MIA offers flexible pathways tailored to students' backgrounds. Those with undergraduate design degrees can complete the program in two years, while those with associate's degrees or degrees in other fields complete it in three years. The degree program embraces an educational philosophy that engages Miami's diverse cultural context, addressing such interior typologies as healthcare, hospitality, retail, workplace and residential design. Through this program, students will cultivate a design sensibility to create interior environments that are humane, sustainable, and grounded in evidence-based practices. **The MIA is a professional, STEM-designated degree, fully accredited by the Council for Interior Design Accreditation (CIDA).**

Accelerated Master of Landscape Architecture

The **accredited, accelerated Master of Landscape Architecture professional degree program** provides a seamless course of study leading from undergraduate freshman year to the conferral of the professional Master of Landscape Architecture degree (MLA). The Accelerated MLA is comprised of 156 credit hours of integrated pre-graduate and graduate coursework. The degree consists of 72 credit hours of pre-graduate coursework which is taken over two years and is followed by 84 credit hours of graduate coursework which can be completed in either three or four years. The program engages applicants with a range of academic and cultural backgrounds, experiences, and interests. Students complete the program with the knowledge, skills, and competencies necessary to enter the profession of landscape architecture upon graduation. The curriculum emphasizes creativity, innovation, design expression, practical knowledge, and environmental stewardship. It includes courses on design, construction, ecology, history, theory, representation, and communication. Faculty are committed to excellence in teaching, creative activity, research, and scholarship. Graduates are ethically responsible, technically skilled, and creatively driven professionals and leaders who excel in analysis, planning, design, and management of the natural and built environment of tropical and subtropical landscapes. **The MLA is a professional, STEM-designated degree, fully accredited by the Landscape Architectural Accreditation Board (LAAB), an autonomous committee of the American Society of Landscape Architects (ASLA).**

Master of Architecture

The **Master of Architecture (MArch) is a professional degree accredited by the National Architectural Accrediting Board (NAAB) and STEM designated by the US Department of Homeland Security.** Based on an applicant's baccalaureate degree field of study, the MArch can be earned via a 2-year or 3-year pathway. It prepares students for professional practice in architecture through six focus areas: architectural design; history/theory; building technologies; digital technologies; ethics and professional business practice; and general education. A

laboratory for the study of architecture and urbanism in the context of rapid growth, Miami provides opportunities to explore environmental challenges, historic structures, and contemporary works by the world's leading practices. The program takes advantage of Miami's geographic location as one of the principal academic and economic gateways to the Global South and Europe.

For more information: <https://carta.fiu.edu/architecture/academics/degrees>

Master of Interior Architecture

The Master of Interior Architecture (MIA) is a professional degree accredited by the Council for Interior Design Accreditation (CIDA), STEM-designated by the US Department of Homeland Security and devoted to the education of Interior Design professionals. The MIA offers flexible pathways tailored to students' backgrounds. Those with undergraduate design degrees can complete the program in two years, while those with associate's degrees or degrees in other fields complete it in three years. The degree program embraces an educational philosophy that engages Miami's diverse cultural context, addressing such interior typologies as healthcare, hospitality, retail, workplace and residential design. Through this program, students will cultivate a design sensibility to create interior environments that are humane, sustainable, and grounded in evidence-based practices.

More information: <https://carta.fiu.edu/interiors/academics/degrees-and-programs/>.

Master of Landscape Architecture

The Master of Landscape Architecture (MLA) is a professional degree accredited by the Landscape Architectural Accreditation Board (LAAB) and STEM-designated by the US Department of Homeland Security. The program engages applicants with a range of academic and cultural backgrounds, experiences, and interests. For post-baccalaureate students, the graduate degree can be earned via a 2-year or 3-year pathway. Students complete the program with the knowledge, skills, and competencies necessary to enter the profession of landscape architecture upon graduation. The curriculum emphasizes creativity, innovation, design expression, practical knowledge, and environmental stewardship. It includes courses on design, construction, ecology, history, theory, representation, and communication. Faculty are committed to excellence in teaching, creative activity, research, and scholarship. Graduates are ethically responsible, technically skilled, and creatively driven professionals and leaders who excel in analysis, planning, design, and management of the natural and built environment of tropical and subtropical landscapes.

For undergraduate students currently at FIU pursuing a degree program that has the flexibility of electives outside the area of study, see information under Admission Requirements for the Master of Landscape Architecture 4+2 Pathway. The requirements of this Other Curricular Offering can be found in the Requirements section: Track, Specialization, Concentration, Area of Emphasis, or Other Curricular Offering Requirements.

More information: <https://carta.fiu.edu/landscape/academics/degrees/>.

Post-Professional (Non-Accredited) Degrees + Certificates

Master of Arts in Interior Architecture

The post-professional [Master of Arts in Interior Architecture \(MAIA\)](https://carta.fiu.edu/interiors/academics/degrees-and-programs/master-of-arts-in-interior-architecture-mia/) program, with a focus on healthcare design, offers education aimed at enhancing professional qualifications with specialized expertise in healthcare design. Eligible candidates hold an undergraduate degree in Interior Design or Architecture from an accredited professional program. The program requires one and a half years of full-time residency. Students undertake a variety of departmental and interdisciplinary courses grounded in evidence-based practices. The program prepares students who wish to conduct research, teach, and undertake advanced studies in healthcare design. While rooted in design principles, it also encourages students to explore innovative 'what-if' scenarios in healthcare design, challenging and advancing conventional industry models. By immersing themselves in Miami's urban community, students can actively contribute to reshaping and improving healthcare environments.

More information: <https://carta.fiu.edu/interiors/academics/degrees-and-programs/master-of-arts-in-interior-architecture-mia/>

Doctor of Design

The post-professional [Doctor of Design \(DDes\)](https://carta.fiu.edu/architecture/academics/degrees/doctor-of-design/) is a 2-year low residency doctoral program. Candidates may opt to study either primarily online, or in person in Miami. The program is designed for working professionals or academics who are already in post, allowing them to remain in post, while completing their doctoral degree. The DDes program focuses on three main areas of research: Advanced Design Technologies, Environmental Studies, and History, Theory and Criticism. The program prepares candidates to reach the highest levels of the profession and academia, and to contribute to the greater body of design knowledge through scholarship, research, and innovation. As a post-professional degree, the DDes provides specialized credentials for advanced professional and academic applied research.

More information: <https://carta.fiu.edu/architecture/academics/degrees/doctor-of-design/>

Graduate Certificate Program

The SoA offers one graduate certificate in the Department of Interior Architecture.

Cruise Ship and Super Yacht Design (CSSY)

The [Certificate in Cruise Ship and Super Yacht Design](https://carta.fiu.edu/interiors/certificate-programs/) prepares designers to address specific issues associated with the design of cruise ship and yacht interiors. This is the nation's only formal educational initiative that prepares interior designers to work in the cruise ship and yacht industry. Admission to the certificate program is limited to students beginning the second year of the Master of Interior Architecture program who have earned a graduate level GPA of 3.0 or higher. Capitalizing on Miami's coastal location, this one-year certificate program is seamlessly integrated into the MIA curriculum and comprises two design studios—one based in Miami, Florida, and the other in Genoa, Italy. The program offers specialized knowledge enabling students to address the conceptual, developmental, and documentation phases of cruise ship and yacht design.

More information: <https://carta.fiu.edu/interiors/certificate-programs/>.

Professional Licensure Requirements Architecture

The **Master of Architecture (M.Arch.)** is a STEM-designated professional degree, accredited by the National Architectural Accreditation Board (NAAB). It fully meets the educational requirements for professional licensure in all 55 U.S. jurisdictions. The FIU program was last accredited in 2017 for the maximum duration granted by the accrediting body. The next accreditation visit will take place in Spring 2026. Licensing requirements for each U.S. jurisdiction can be found on the NCARB website: https://www.ncarb.org/become-architect/earn-license_with_specific_jurisdiction_requirements_detailed_here: <https://www.ncarb.org/get-licensed/licensing-requirements-tool>.

Graduates of the FIU Master of Architecture (M.Arch.) program are eligible to take the **Architecture Registration Exam (ARE)**. Details on the ARE and licensure processes can be found here: <https://www.ncarb.org/become-architect/earn-license>.

While the M.Arch. degree qualifies graduates to sit for the ARE, it does not grant licensure.

Interior Architecture

The **Master of Interior Architecture (MIA)** is a STEM-designated professional degree accredited by the Council for Interior Design Accreditation (CIDA). It fully meets the educational requirements for U.S. licensure, and grants eligibility to sit for the **National Council for Interior Design Qualification Examination (NCIDQ Exam)**. The MIA program was last accredited in 2019 for the maximum duration granted by the accrediting body. The next accreditation visit will take place in Fall 2025. Complete licensing requirements for Interior Architecture can be found here: <https://carta.fiu.edu/interiors/academics/cida-accreditation/>.

Graduates of the FIU Master of Interior Architecture (MIA) program are eligible to take the NCIDQ Examination. Details on the NCIDQ process can be found here: <https://www.cidq.org/eligibility-requirements>.

While the MIA degree qualifies graduates to sit for the NCIDQ exam, it does not grant licensure.

Landscape Architecture + Environmental and Urban Design

The **Master of Landscape Architecture (MLA)** is a STEM-designated professional degree accredited by the Landscape Architectural Accreditation Board (LAAB). It meets the educational requirements for licensure in all 50 states and the District of Columbia. The program was last accredited in Fall 2024 for a six-year period—the maximum duration granted by the accrediting body. The next accreditation visit will take place during Fall 2030. Licensing requirements for each state can be found on the ASLA website (access individual state details here: <https://www.asla.org/StateGovtAffairsLicensure.aspx>) or through the ASLA fact sheet: https://www.asla.org/uploadedFiles/CMS/Government_Affairs/Licensure_One-sheet.pdf.

Graduates of the FIU MLA program are eligible to take the **Landscape Architecture Registration Examination (LARE)**. Details on the exam and licensure can be found here: (https://www.leg.state.fl.us/Statutes/index.cfm?App_mode=Display_Statute&Search_String=&URL=0400-0499/0481/0481PARTIIContentsIndex.html).

While the MLA degree qualifies graduates to sit for the LARE, it does not grant licensure.